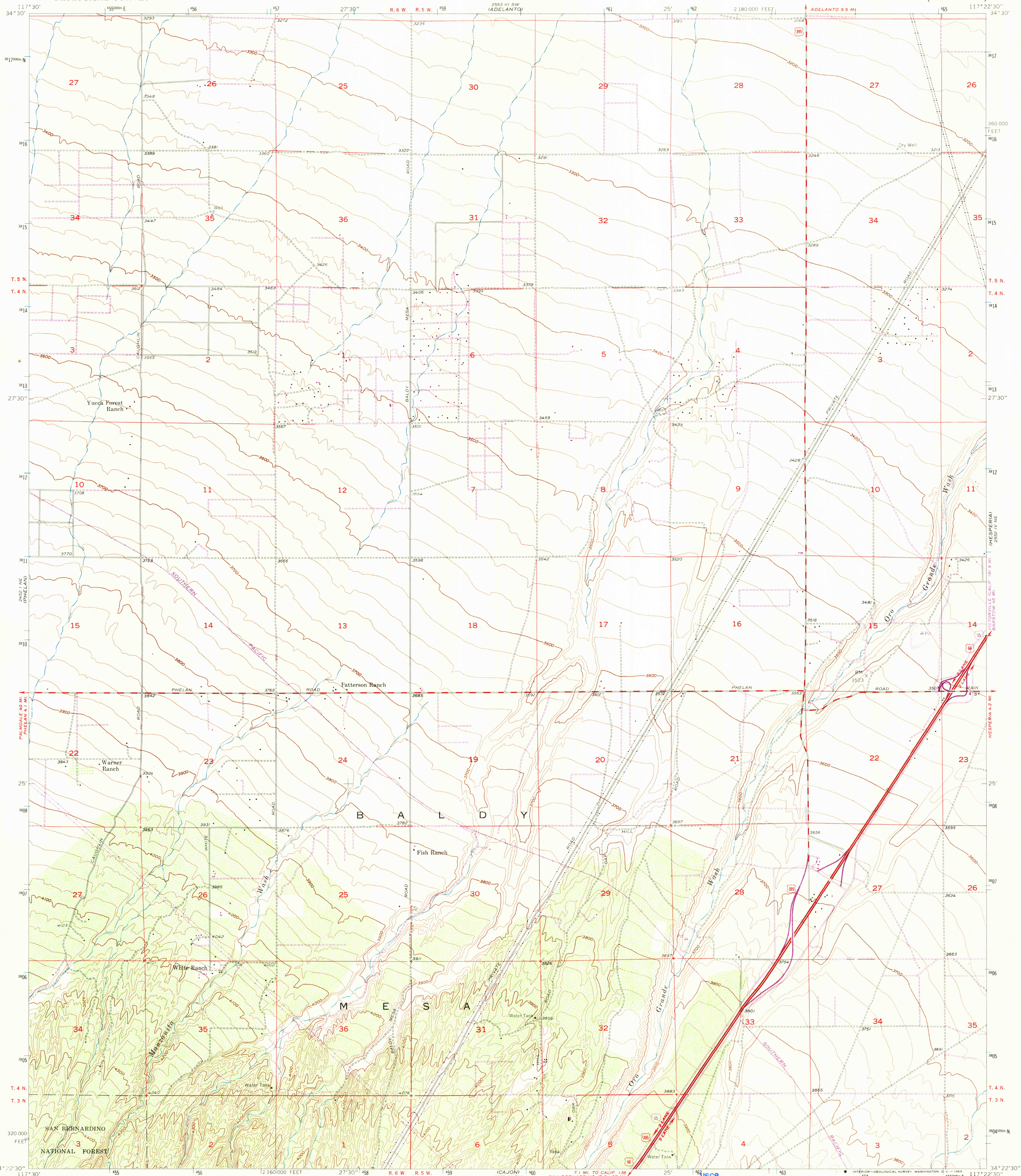


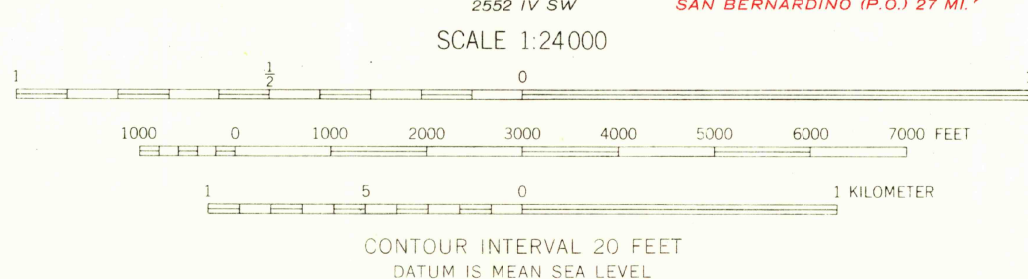
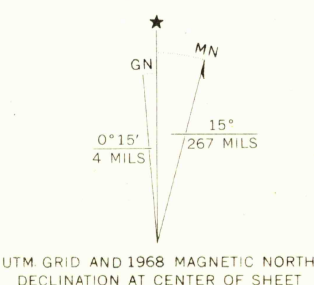
UNITED STATES
DEPARTMENT OF THE INTERIOR
GEOLOGICAL SURVEY

BALDY MESA QUADRANGLE
CALIFORNIA—SAN BERNARDINO CO.
7.5 MINUTE SERIES (TOPOGRAPHIC)



Mapped, edited, and published by the Geological Survey
Control by USGS, USC&GS, and USCE
Topography from aerial photographs by Kelsh plotter
Aerial photographs taken 1952. Field check 1956
Polyconic projection, 1927 North American datum
10,000-foot grid based on California coordinate system, zone 5
1000-meter Universal Transverse Mercator grid ticks,
zone 10, shown in blue

Revised in cooperation with California
Department of Water Resources
Revisions shown in purple compiled from aerial photographs
taken 1968. This information not field checked



USGS
Historical File
Topographic Division

ROAD CLASSIFICATION	
Heavy-duty	Light-duty
Medium-duty	Unimproved dirt
Interstate Route	U. S. Route

U.S.G.S.
FILE COPY
TOPOGRAPHIC DIVISION

BALDY MESA, CALIF.
N3422.5—W11722.5/7.5

1956

PHOTO REVISION 1968
AMS 2552 IV NW—SERIES V895

THIS MAP COMPLIES WITH NATIONAL MAP ACCURACY STANDARDS
FOR SALE BY U.S. GEOLOGICAL SURVEY, DENVER, COLORADO 80225, OR WASHINGTON, D. C. 20242
A FOLDER DESCRIBING TOPOGRAPHIC MAPS AND SYMBOLS IS AVAILABLE ON REQUEST

6885
JAN 21 1970