

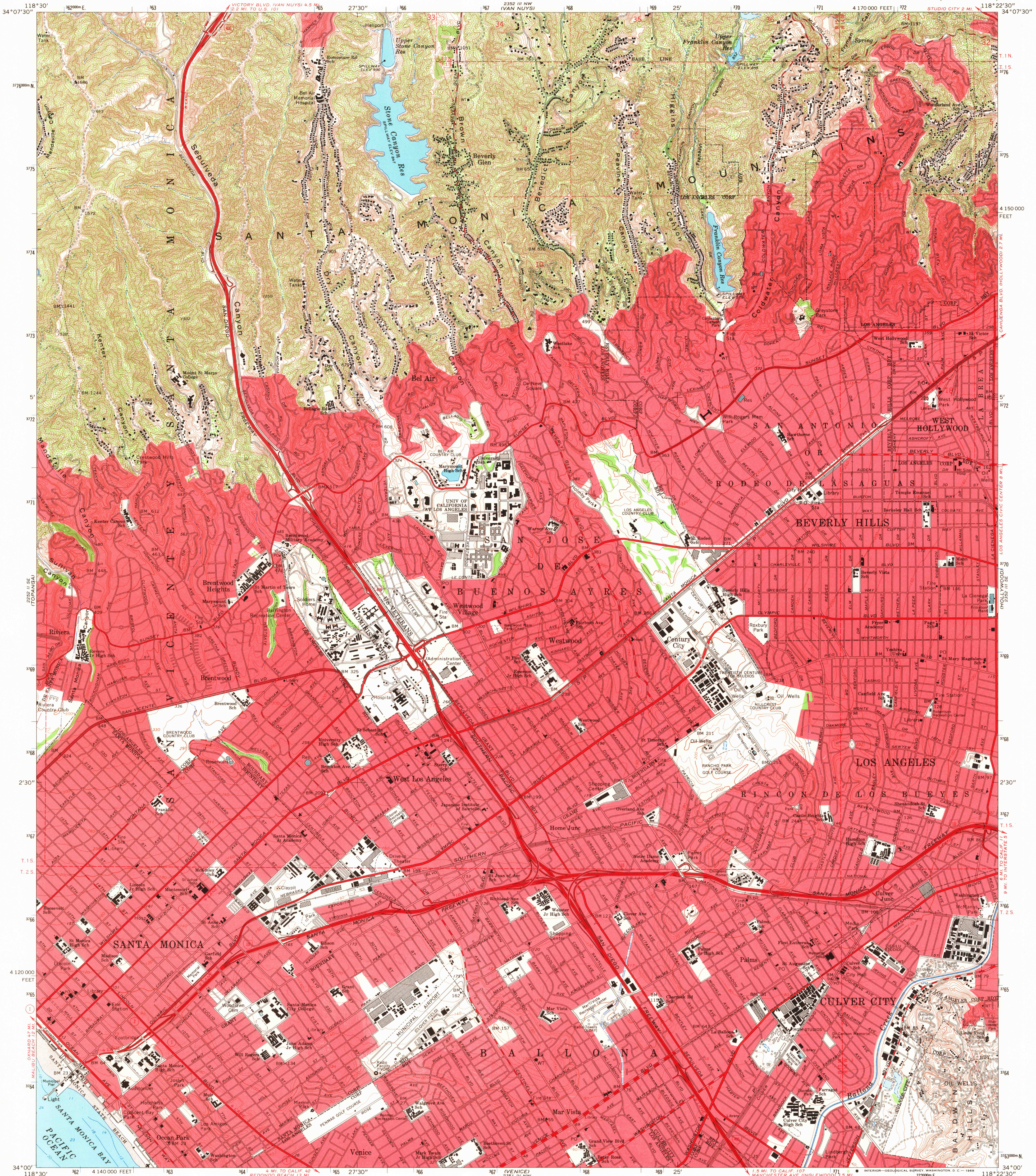
118°30' 34°07'30"

UNITED STATES
DEPARTMENT OF THE INTERIOR
GEOLOGICAL SURVEY

STATE OF CALIFORNIA
DEPARTMENT OF WATER RESOURCES

BEVERLY HILLS QUADRANGLE
CALIFORNIA-LOS ANGELES CO.
7.5 MINUTE SERIES (TOPOGRAPHIC)

118°22'30" 34°07'30"



Mapped, edited, and published by the Geological Survey

Control by USGS, USC&GS, and Los Angeles City and County

Topography by photogrammetric methods from aerial photographs taken 1964. Field checked 1966
Supersedes map surveyed 1923-24, revised 1950

Selected hydrographic data compiled from USC&GS Chart 5144 (1964)

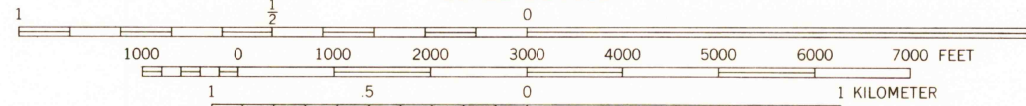
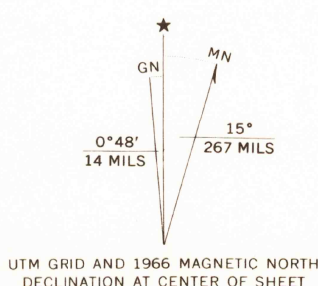
This information is not intended for navigational purposes

Polycyclic projection. 1927 North American datum
10,000-foot grid based on California coordinate system, zone 7
1000-meter Universal Transverse Mercator grid ticks,
zone 11, shown in blue

Red tint indicates areas in which only landmark buildings are shown

A portion of the south half of this map lies within a subsidence area

Vertical control based on latest available adjustment



CONTOUR INTERVAL 20 FEET
DOTTED LINES REPRESENT 10-FOOT CONTOURS
DATUM IS MEAN SEA LEVEL
DEPTH CURVES AND SOUNDINGS IN FEET—DATUM IS MEAN LOWER LOW WATER
SHORELINE SHOWN REPRESENTS THE APPROXIMATE LINE OF MEAN HIGH WATER
THE MEAN RANGE OF TIDE IS APPROXIMATELY 4 FEET

THIS MAP COMPLIES WITH NATIONAL MAP ACCURACY STANDARDS
FOR SALE BY U. S. GEOLOGICAL SURVEY, DENVER, COLORADO 80225, OR WASHINGTON, D. C. 20242
A FOLDER DESCRIBING TOPOGRAPHIC MAPS AND SYMBOLS IS AVAILABLE ON REQUEST

USGS
Historical File
Topographic Division



U.S.G.S.
FILE COPY
TOPOGRAPHIC DIVISION

ROAD CLASSIFICATION
Heavy-duty ——— Light-duty ———
Medium-duty ——— Unimproved dirt ———
Interstate Route ——— U. S. Route ——— State Route ———

BEVERLY HILLS, CALIF.
N3400—W11822.5/7.5

1966
AMS 2352 III SW—SERIES V895

118°22'30" 34°07'30"

15/65
AUG 1 9 1968