

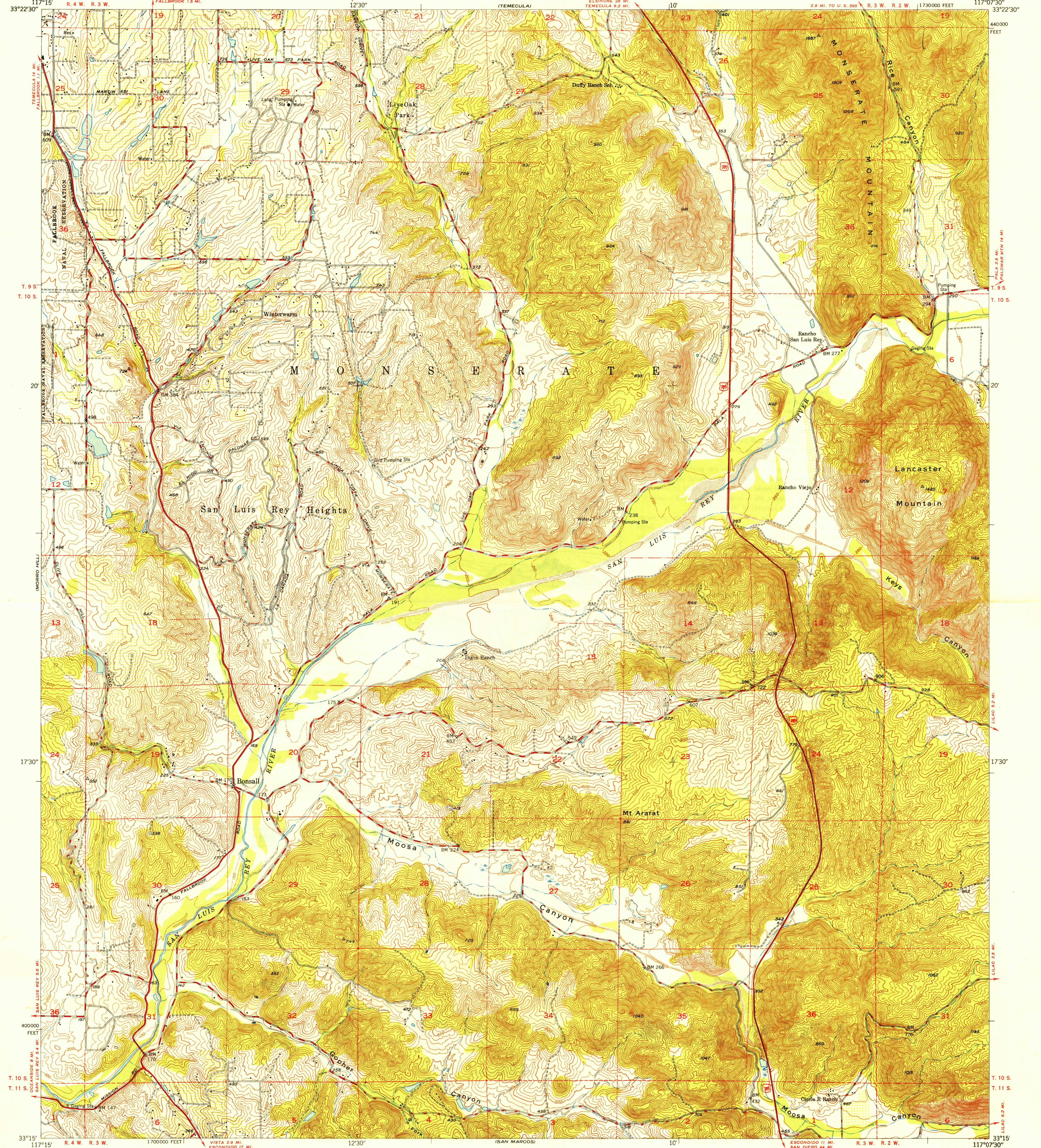
FALLBROOK

UNITED STATES  
DEPARTMENT OF THE INTERIOR  
GEOLOGICAL SURVEY

U. S. G. S.  
FILE COPY  
Inspection and Editing

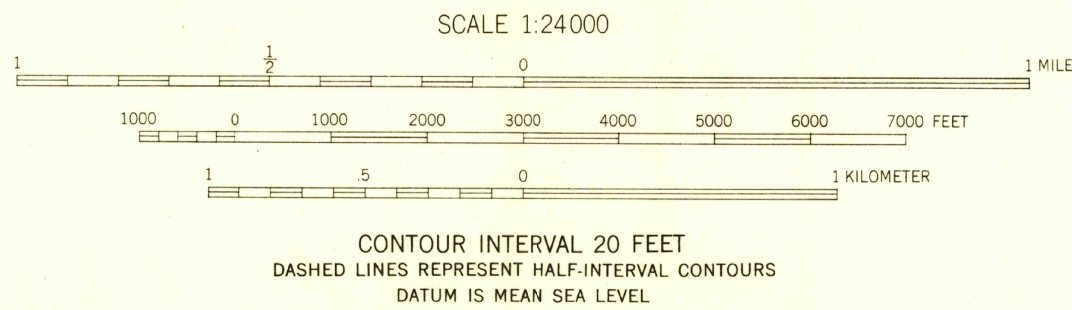
STATE OF CALIFORNIA  
EARL WARREN, GOVERNOR  
C. H. PURCELL, DIRECTOR OF PUBLIC WORKS  
EDWARD HYATT, STATE ENGINEER

BONSALL QUADRANGLE  
CALIFORNIA-SAN DIEGO CO.  
7.5 MINUTE SERIES (TOPOGRAPHIC)



Maped, edited, and published by the Geological Survey  
Control by USGS, USC&GS and U. S. Army  
Topography from aerial photographs by multiplex methods  
Aerial photographs taken 1946 Field check 1948  
Polyconic projection. 1927 North American datum  
10,000-foot grid based on California coordinate system,  
zone 6  
Dashed land lines indicate approximate location

TRUE NORTH  
MAGNETIC NORTH  
APPROXIMATE MEAN  
DECLINATION, 1948



THIS MAP COMPLIES WITH NATIONAL MAP ACCURACY STANDARDS  
FOR SALE BY U. S. GEOLOGICAL SURVEY, WASHINGTON 25, D. C.

USGS  
Historical File  
Topographic Division

WOODLAND  
Woods-Brushwood  
Scrub  
Orchard

ROAD CLASSIFICATION  
HARD-SURFACE ALL WEATHER ROADS DRY WEATHER ROADS  
Heavy-duty 4 LANE LANE Improved dirt  
Medium-duty 4 LANE LANE Unimproved dirt  
Loose-surface, graded, or narrow hard-surface  
U. S. Route State Route

U. S. G. S.  
FILE COPY  
Inspection and Editing

BONSALL, CALIF.  
N3315-W11707.5/7.5  
EDITION OF 1949