

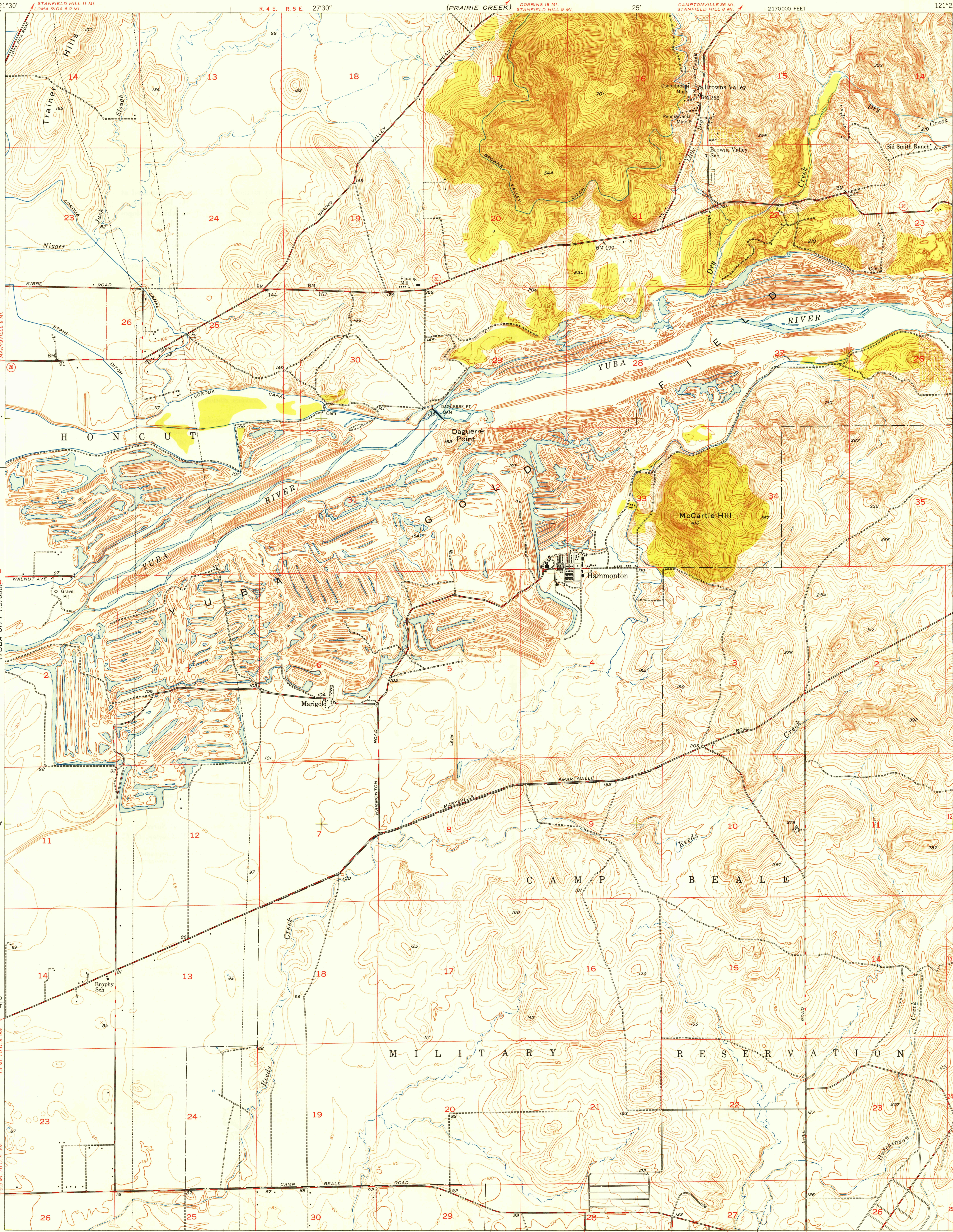
UNITED STATES
DEPARTMENT OF THE INTERIOR
GEOLOGICAL SURVEY

STATE OF CALIFORNIA
EARL WARREN, GOVERNOR
C. H. PURCELL, DIRECTOR OF PUBLIC WORKS
EDWARD HYATT, STATE ENGINEER

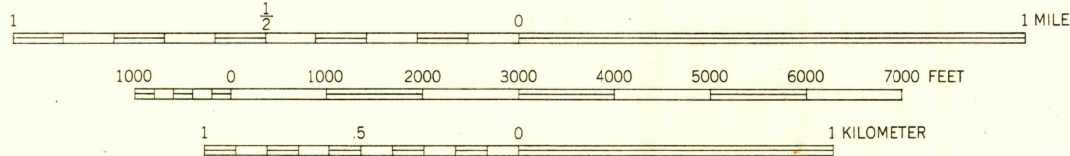
BROWNS VALLEY QUADRANGLE
CALIFORNIA-YUBA CO.
7.5 MINUTE SERIES (TOPOGRAPHIC)

U.S.G.S.
FILE COPY
Inspection and Editing

U.S.G.S.
FILE COPY
Inspection and Editing



Mapped, edited, and published by the Geological Survey
Control by USGS and USC & GS
Culture and drainage in part compiled from
aerial photographs taken 1943
Topography by plane-table methods 1946-1947
Polyconic projection. 1927 North American datum
10,000-foot grid based on California coordinate system,
zone 2
Buildings omitted from Camp Beale Military Reservation



CONTOUR INTERVAL 5 FEET
CONTOUR INTERVAL IN DREGED AREA 25 FEET
DATUM IS MEAN SEA LEVEL

THIS MAP COMPLIES WITH NATIONAL MAP ACCURACY STANDARDS
FOR SALE BY U. S. GEOLOGICAL SURVEY, WASHINGTON 25, D. C.

USGS
Historical File
Topographic Division
Inspection and Editing

WOODLAND
Woods-Brushwood
Orchard

ROAD CLASSIFICATION
HARD-SURFACE ALL WEATHER ROADS
Heavy-duty... 4 LANE LANE Improved dirt...
Medium-duty... 4 LANE LANE Unimproved dirt...
Loose-surface, graded, or narrow hard-surface...
U. S. Route
State Route

BROWNS VALLEY, CALIF.
N3907.5-W12122.5/7.5

PRINTED 1949

MAR 21 1949

3205