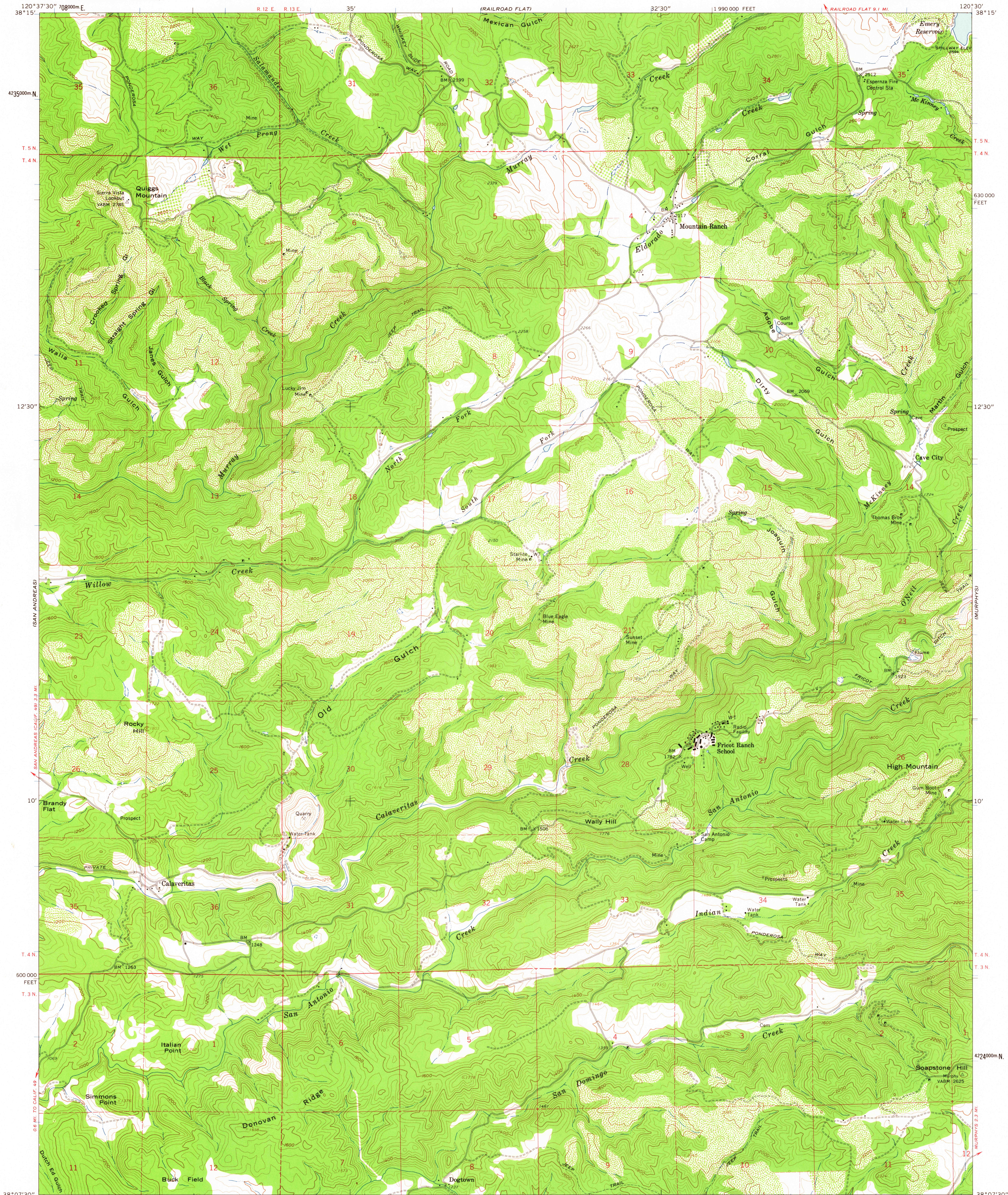


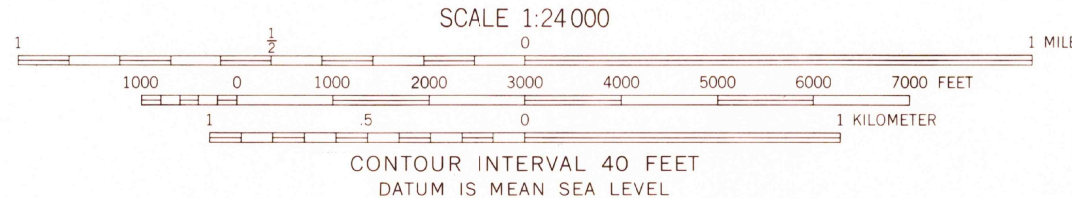
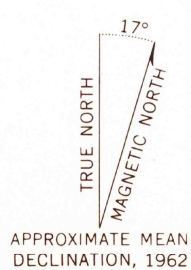
UNITED STATES
DEPARTMENT OF THE INTERIOR
GEOLOGICAL SURVEY

CALAVERITAS QUADRANGLE
CALIFORNIA—CALAVERAS CO.
7.5 MINUTE SERIES (TOPOGRAPHIC)
NE/4 SAN ANDREAS 15' QUADRANGLE



Mapped, edited, and published by the Geological Survey
in cooperation with California Department of Water Resources
Control by USGS and USC&GS

Topography by photogrammetric methods from aerial
photographs taken 1959. Field checked 1962
Polyconic projection. 1927 North American datum
10,000-foot grid based on California coordinate system, zone 3
1000-meter Universal Transverse Mercator grid ticks,
zone 10, shown in blue
Fine red dashed lines indicate selected fence lines



USGS
Historical File
Topographic Division



ROAD CLASSIFICATION
Light-duty ——— Unimproved dirt ———

CALAVERITAS, CALIF.
NE/4 SAN ANDREAS 15' QUADRANGLE
N3807.5—W12030.7.5

1962

THIS MAP COMPLIES WITH NATIONAL MAP ACCURACY STANDARDS
FOR SALE BY U.S. GEOLOGICAL SURVEY, DENVER 25, COLORADO OR WASHINGTON 25, D. C.
A FOLDER DESCRIBING TOPOGRAPHIC MAPS AND SYMBOLS IS AVAILABLE ON REQUEST

OCT - 9 1963

3130