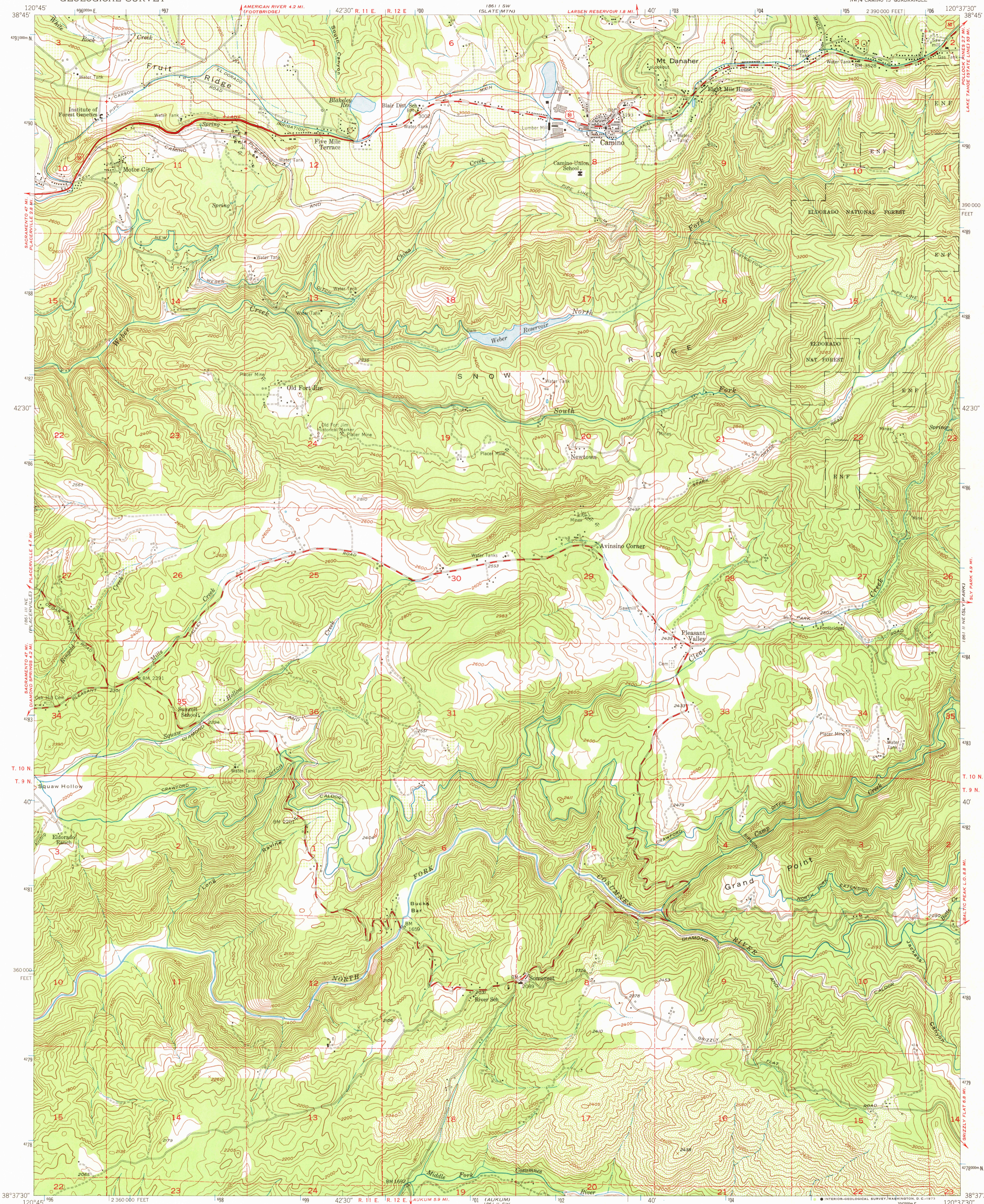
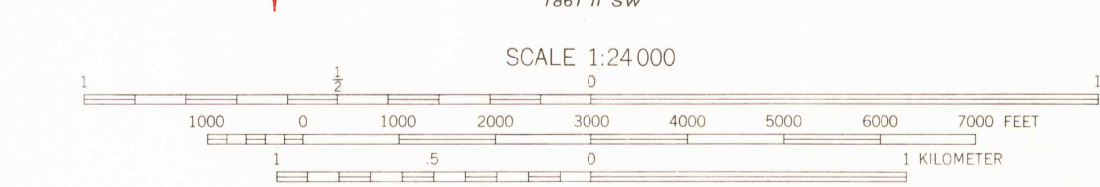
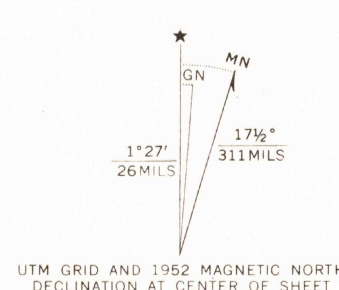


UNITED STATES
DEPARTMENT OF THE INTERIOR
GEOLOGICAL SURVEY

CAMINO QUADRANGLE
CALIFORNIA—EL DORADO CO.
7.5 MINUTE SERIES (TOPOGRAPHIC)
NW 1/4 CAMINO 15' QUADRANGLE



Mapped, edited, and published by the Geological Survey
Control by USGS and USC&GS
Topography from aerial photographs by multiplex methods
Aerial photographs taken 1948. Field check 1952
Polyconic projection. 1927 North American datum
10,000-foot grid based on California coordinate system, zone 2
1000-meter Universal Transverse Mercator grid ticks,
zone 10, shown in blue
Dashed land lines indicate approximate locations
Unchecked elevations are shown in brown



THIS MAP COMPLIES WITH NATIONAL MAP ACCURACY STANDARDS
FOR SALE BY U. S. GEOLOGICAL SURVEY, DENVER, COLORADO 80225, OR WASHINGTON, D. C. 20242
A FOLDER DESCRIBING TOPOGRAPHIC MAPS AND SYMBOLS IS AVAILABLE ON REQUEST

ROAD CLASSIFICATION

- Heavy-duty —————
- Light-duty —————
- Medium-duty —————
- Unimproved dirt —————
- U. S. Route

CAMINO, CALIF.
NW 1/4 CAMINO 15' QUADRANGLE
N3837.5—W12037.5/7.5
1952
AMS 1861 II NW—SERIES V895

QUADRANGLE LOCATION

Historical File
Topographic Division

JUN 12 1973