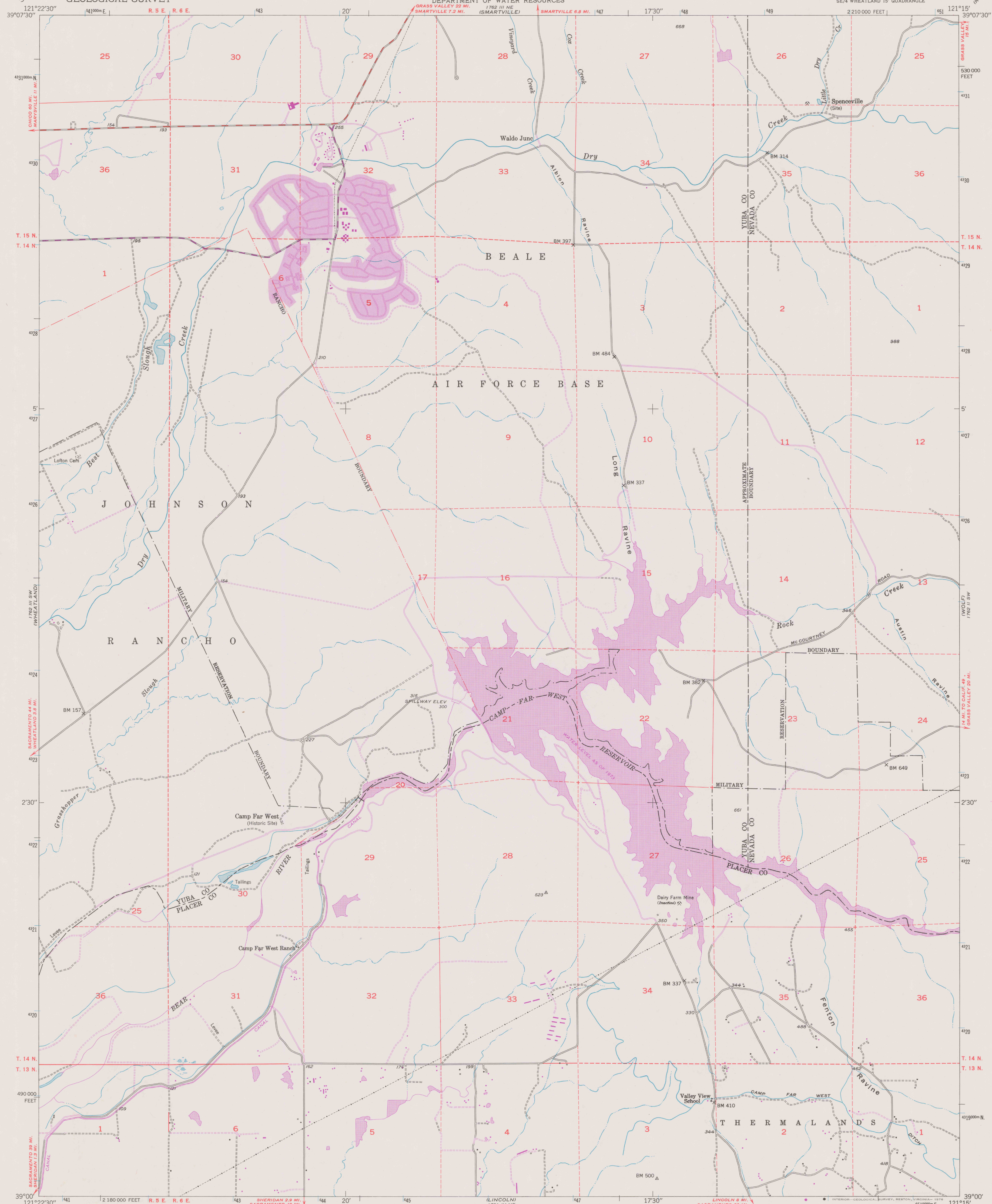


UNITED STATES
DEPARTMENT OF THE INTERIOR
GEOLOGICAL SURVEY

STATE OF CALIFORNIA
DEPARTMENT OF WATER RESOURCES

CAMP FAR WEST QUADRANGLE
CALIFORNIA
7.5 MINUTE SERIES (TOPOGRAPHIC)



Mapped, edited, and published by the Geological Survey

Control by USGS and USC&GS

Topography from aerial photographs by multiplex methods
Aerial photographs taken 1947. Field check 1949

Polycyclic projection. 1927 North American datum
10,000-foot grid based on California coordinate system,
zone 2

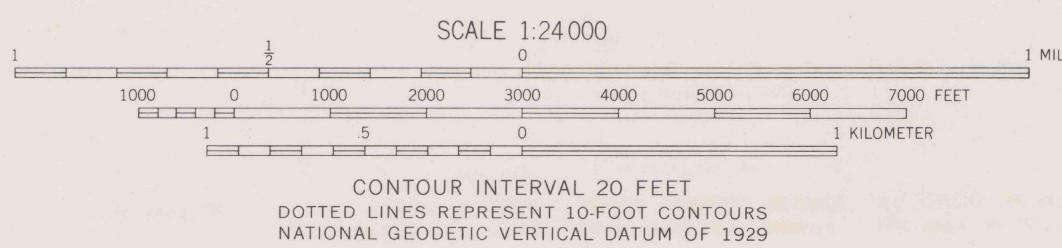
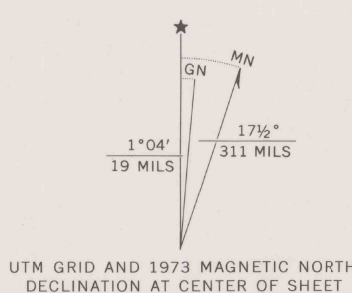
Dashed land lines indicate approximate location

Unchecked elevations are shown in brown

1000-meter Universal Transverse Mercator grid ticks,
zone 10, shown in blue

Revisions shown in purple compiled from aerial photographs
taken 1973. This information not field checked

Purple tint indicates extension of urban areas



THIS MAP COMPLIES WITH NATIONAL MAP ACCURACY STANDARDS
FOR SALE BY U.S. GEOLOGICAL SURVEY, DENVER, COLORADO 80225, OR RESTON, VIRGINIA 22092
A FOLDER DESCRIBING TOPOGRAPHIC MAPS AND SYMBOLS IS AVAILABLE ON REQUEST



ROAD CLASSIFICATION
Medium-duty ——— Light-duty ———
Unimproved dirt ———

FOR EARLIEST
EDITION OF
THIS MAP SEE
3052.C4831.U5:
Spenceville

CAMP FAR WEST, CALIF.

SE/4 WHEATLAND 15' QUADRANGLE
N3900—W12115/7.5

1949
PHOTOREVISED 1973
AMS 1762 III SE—SERIES V895

DO NOT CIRCULATE

REFERENCE
REF
3700s
Var
U5
7.5
ed. 1973
rep. 1976 pp