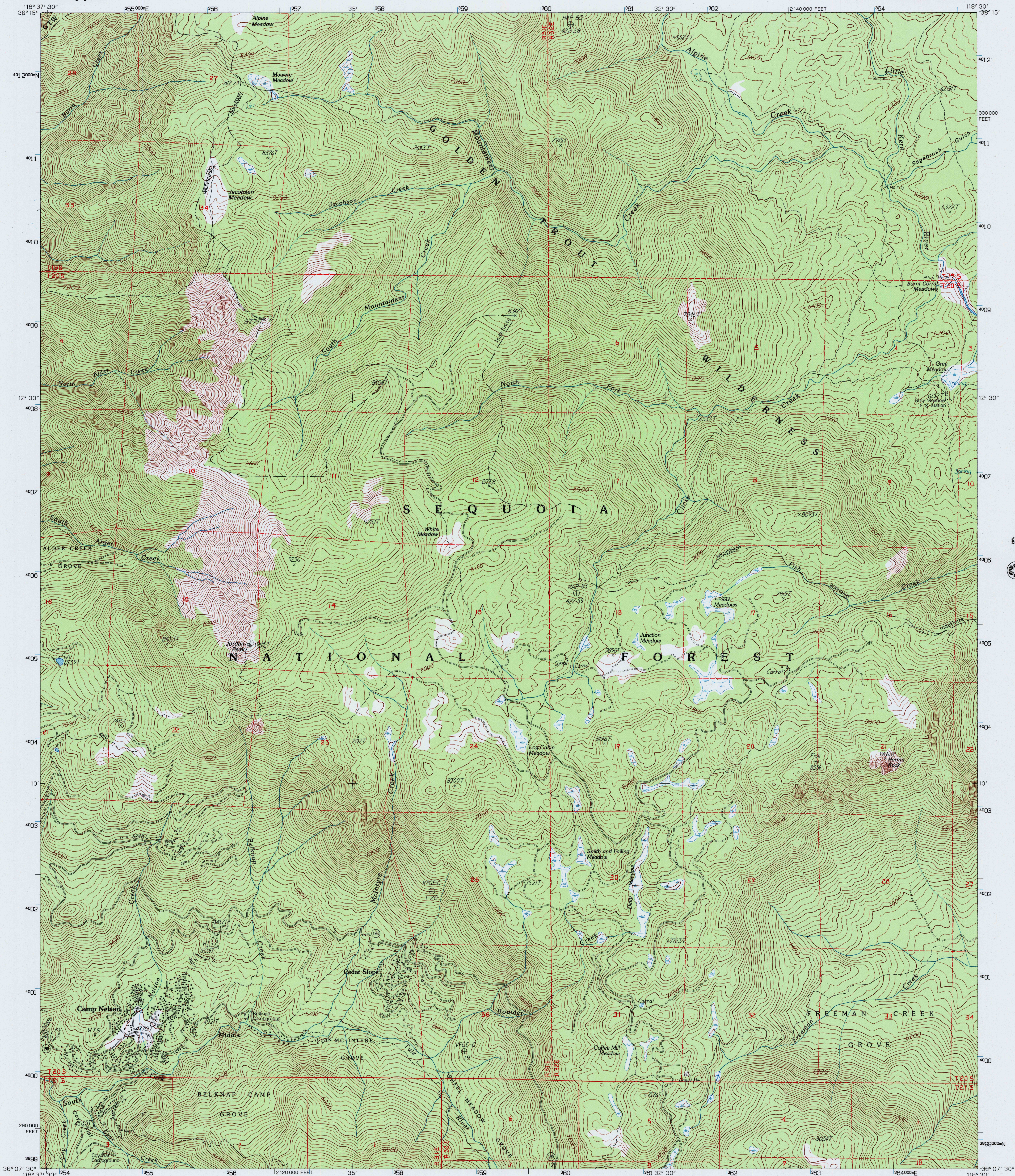




U.S. DEPARTMENT OF THE INTERIOR
U.S. GEOLOGICAL SURVEY

CAMP NELSON QUADRANGLE
CALIFORNIA—TULARE CO.
7.5 MINUTE SERIES (TOPOGRAPHIC)

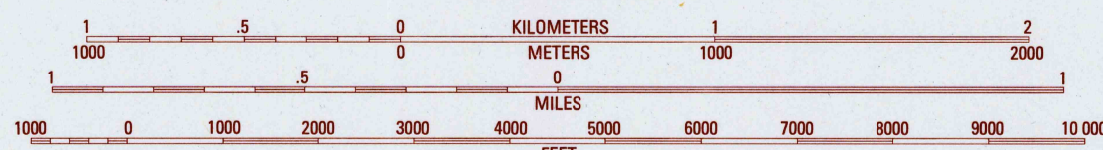


PRODUCED BY THE UNITED STATES GEOLOGICAL SURVEY
CONTROL BY USGS, NOS/NOAA
COMPILED FROM AERIAL PHOTOGRAPHS TAKEN 1983
FIELD CHECKED 1984, MAP EDITED 1987
PROJECTION LAMBERT CONFORMAL CONIC
BLUE 1000-METER UNIVERSAL TRANSVERSE MERCATOR ZONE 11
10 000-FOOT STATE GRID TICKS CALIFORNIA, ZONE 4
UTM GRID DECLINATION 14°30' EAST
VERTICAL DATUM NATIONAL GEODETIC VERTICAL DATUM OF 1929
HORIZONTAL DATUM 1927 NORTH AMERICAN DATUM (NAD 27)
North American Datum of 1983 (NAD 83) is shown by
dashed corner ticks. The values of the shift between NAD
27 and NAD 83 for 7.5-minute intersections are obtainable
from National Geodetic Survey NADCON software
There may be private inholdings within the boundaries of
any Federal and State reservations shown on this map
No distinction made between houses, barns, and other
buildings
Certain land lines are omitted because of insufficient data

PROVISIONAL MAP
Produced from original
manuscript drawings. Information
shown as of date of
photography. 1

Photinspected from 1993 source; no major culture or
drainage changes observed. Boundaries and names verified
1994

SCALE 1:24 000



CONTOUR INTERVAL 40 FEET

To convert meters to feet multiply by 3.2808
To convert feet to meters multiply by 0.3048

FOR SALE BY U.S. GEOLOGICAL SURVEY
P.O. BOX 25286, DENVER, COLORADO 80225



QUADRANGLE LOCATION

1	2	3
4	5	6
7	8	

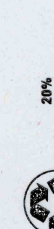
ADJOINING 7.5 QUADRANGLE NAMES

ROAD LEGEND

Improved Road
Unimproved Road
Trail
Interstate Route U.S. Route State Route

CAMP NELSON, CA
PROVISIONAL EDITION 1987

36118-B5-TF-024
MINOR REVISION 1994



TOTAL REVISION PER

9780607106633