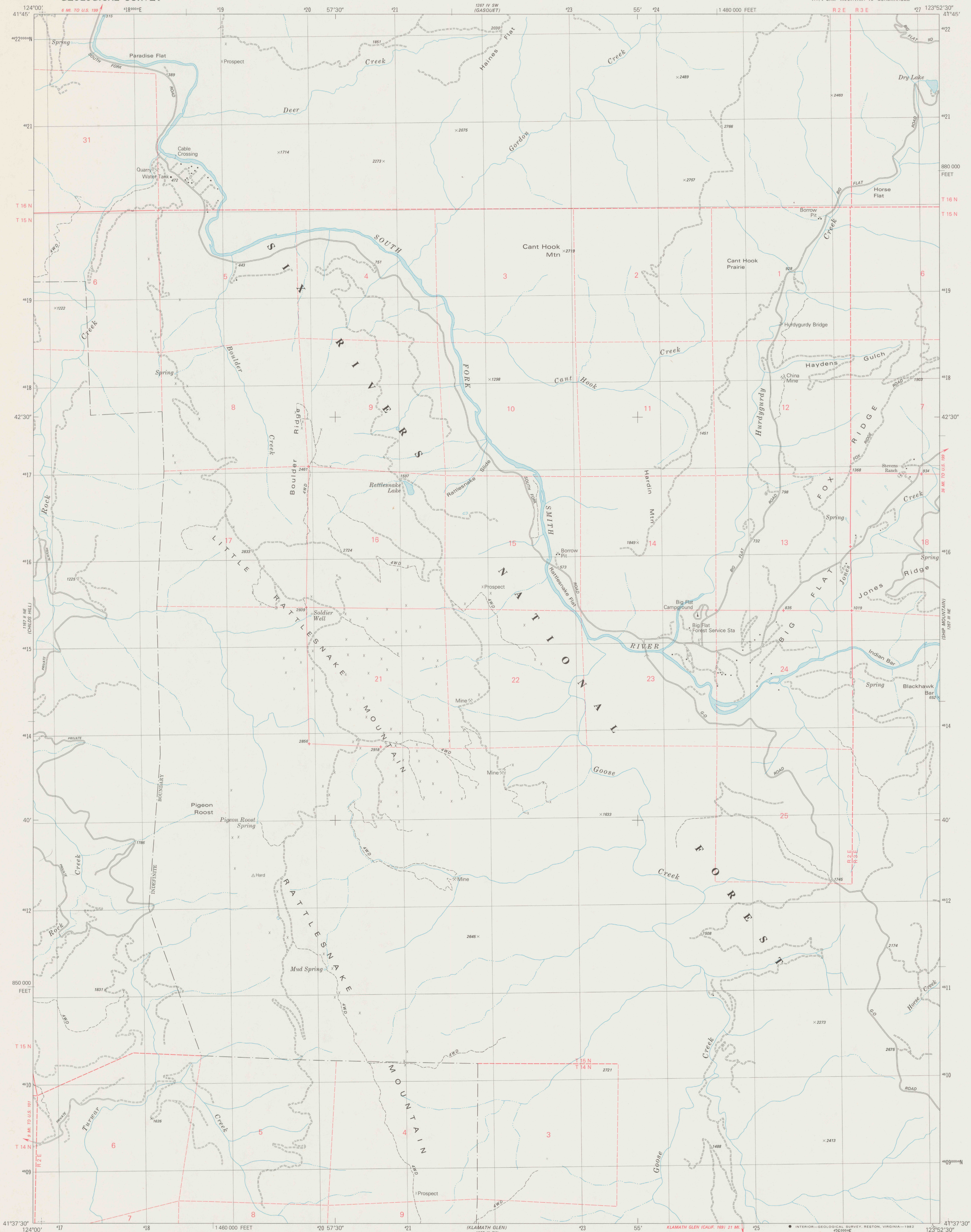


UNITED STATES
DEPARTMENT OF THE INTERIOR
GEOLOGICAL SURVEY

CANT HOOK MTN. QUADRANGLE
CALIFORNIA-DEL NORTE CO.
7.5 MINUTE SERIES (TOPOGRAPHIC)
NW/4 SHIP MOUNTAIN 15' QUADRANGLE



Mapped, edited, and published by the Geological Survey

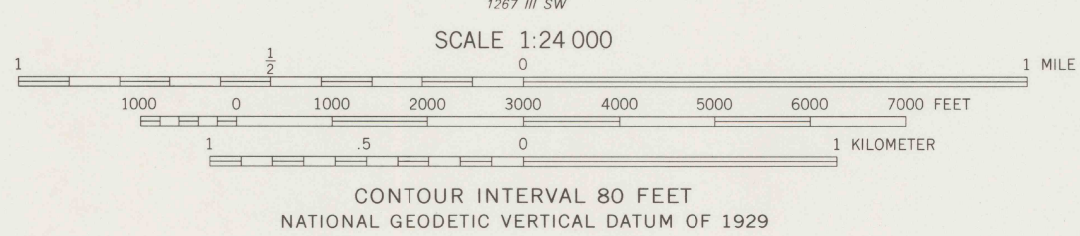
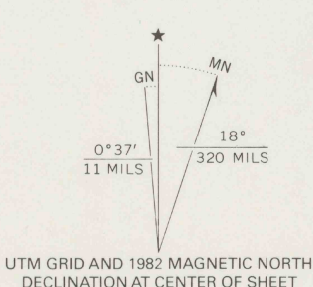
Control by USGS and NOS/NOAA

Topography by photogrammetric methods from aerial photographs taken 1975-76. Field checked 1977. Map edited 1982.

Projection and 10,000-foot grid ticks: California coordinate system, zone 1 (Lambert conformal conic) 1000-meter Universal Transverse Mercator grid, zone 10 1927 North American Datum

To place on the predicted North American Datum 1983 move the projection lines 21 meters north and 97 meters east as shown by dashed corner ticks

Certain land lines are omitted because of insufficient data. There may be private inholdings within the boundaries of the National or State reservations shown on this map.



ROAD CLASSIFICATION	
Primary highway, hard surface	Light-duty road, hard or improved surface
Secondary highway, hard surface	Unimproved road
Interstate Route	U. S. Route
	State Route

CANT HOOK MTN., CALIF.
NW/4 SHIP MOUNTAIN 15' QUADRANGLE
N4137.5-W12352.5/7.5

1982

DMA 1267 11 NW-SERIES V895

DO NOT CIRCULATE

REFERENCE
Rt. 37
Var U5
7.5
ed. 1982 PP