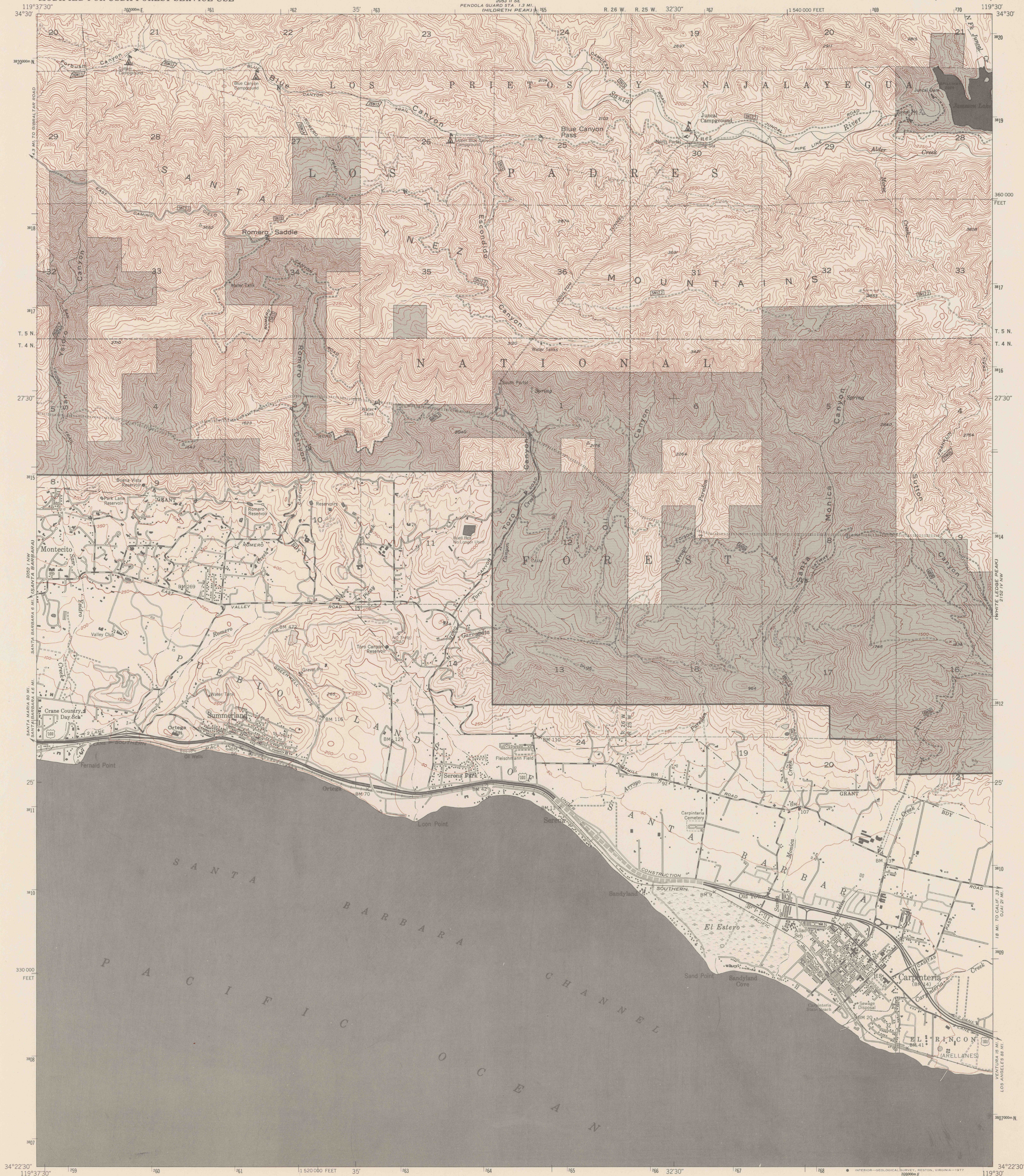
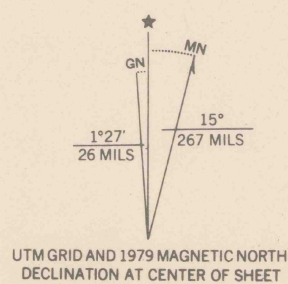


UNITED STATES  
DEPARTMENT OF THE INTERIOR  
GEOLOGICAL SURVEY  
MODIFIED FOR USDA FOREST SERVICE USE

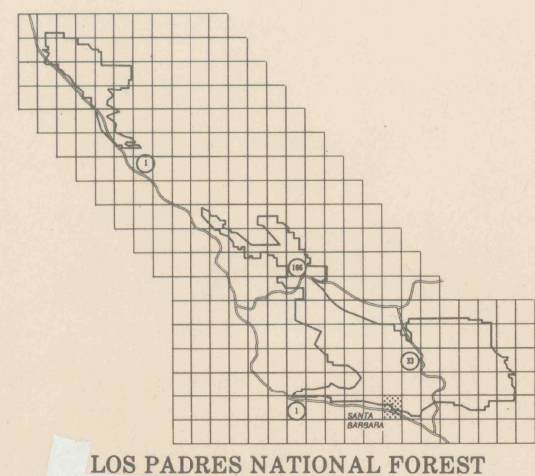
CARPINTERIA QUADRANGLE  
CALIFORNIA-SANTA BARBARA CO.  
7.5 MINUTE SERIES (TOPOGRAPHIC)



Base map prepared by the U.S. Geological Survey,  
Edited and published by the Geological Survey  
Control by USC&GS and USBR  
Topography from aerial photographs by KEK plotter methods  
Aerial photographs taken 1947. Culture revision by USGS 1952  
Polyconic projection. 1927 North American datum  
10,000-foot grid based on California coordinate system, zone 5  
1000-meter Universal Transverse Mercator grid ticks,  
zone 11, shown in blue  
Revisions shown in purple compiled by the Geological Survey from  
aerial photographs taken 1967. This information is not field checked  
Purple tint indicates extension of urban areas  
Modification to USGS base map by the Geomorphology Service  
Center from 1978 aerial photography and 1979 correction  
guides furnished by the Pacific Southwest Region  
Landnet revised according to additional Forest Service evidence



- LEGEND**
- National Forest Boundary
  - Alienated Land within the National Forest Boundary as of 1979
  - TOWNSHIP AND SECTION LINE CLASSIFICATION
  - Surveyed, Location Reliable
  - Surveyed, Location Approximate
  - Unsurveyed, Protracted
  - Primary Highway
  - Secondary Highway
  - Improved Light Duty
  - Unimproved Dirt
  - Trail
  - Barrier
  - Locked Gate
  - Interstate Highway
  - U.S. Highway
  - State Highway
  - County Road
  - Forest Highway
  - Forest Road
  - Forest Trail



CARPINTERIA, CALIF.  
142-1C

REF  
3700s  
VAR  
US  
75'