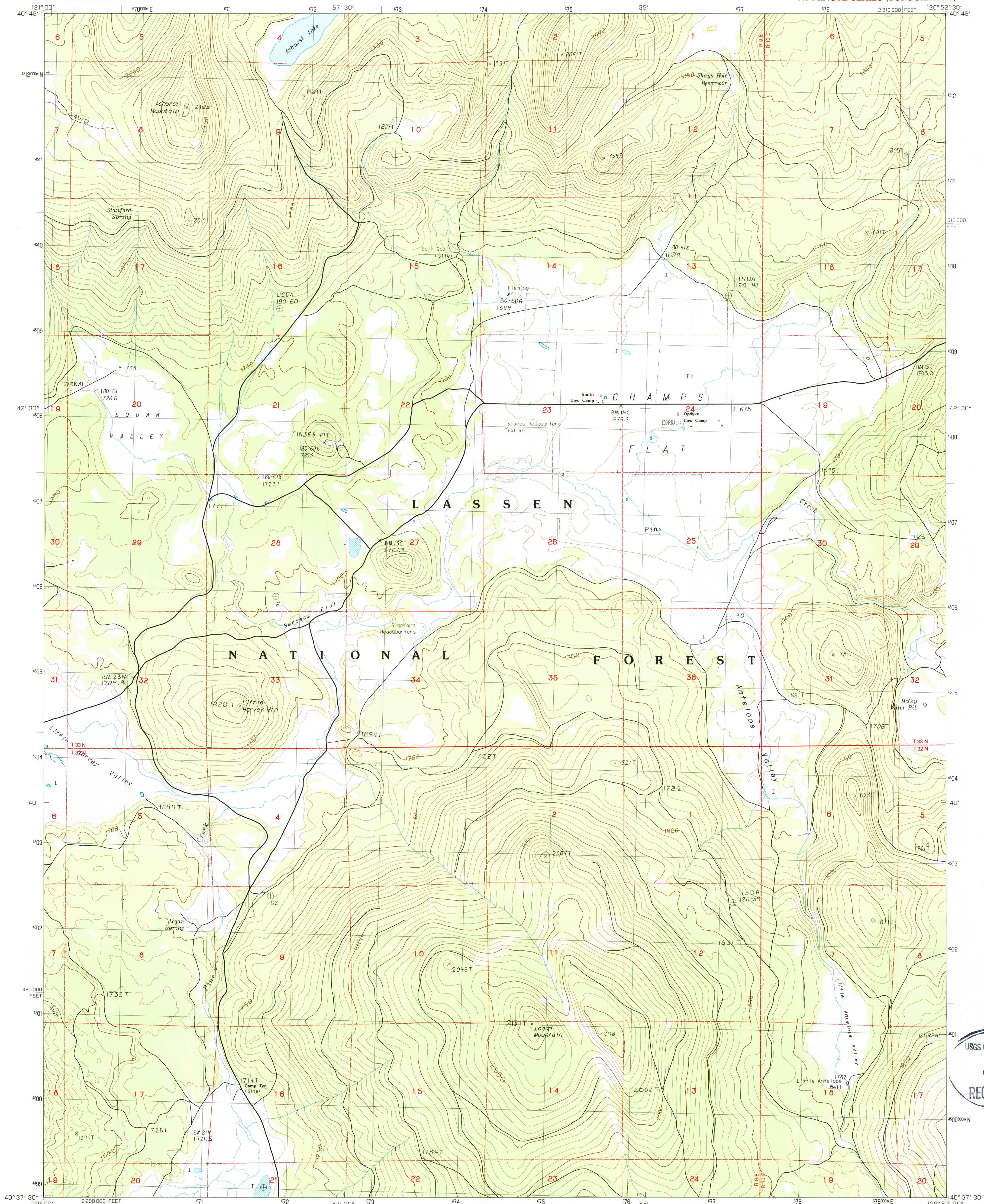


UNITED STATES
DEPARTMENT OF THE INTERIOR
GEOLOGICAL SURVEY

CHAMPS FLAT QUADRANGLE
CALIFORNIA—LASSEN CO.
7.5 MINUTE SERIES (TOPOGRAPHIC)



USGS NMD HISTORICAL MAP
AUG 10 1987
REC'D FILE COPY

PRODUCED BY THE UNITED STATES GEOLOGICAL SURVEY
CONTROL BY USGS, NOS, NOAA
COMPILED FROM AERIAL PHOTOGRAPHS TAKEN 1976 and 1980
FIELD CHECKED 1981. MAP EDITED 1983
PROJECTION: 1000-METER UNIVERSAL TRANSVERSE MERCATOR
GRID: 1000-METER UNIVERSAL TRANSVERSE MERCATOR, ZONE 10
10,000-FOOT STATE GRID TICS. CALIFORNIA, ZONE 1
UTM GRID DECLINATION: 1721 EAST
1980 MAGNETIC NORTH DECLINATION: 1736 EAST
VERTICAL DATUM: NATIONAL GEODETIC VERTICAL DATUM OF 1929
HORIZONTAL DATUM: 1927 NORTH AMERICAN DATUM
To place on the predicted North American Datum of 1983,
move the projection lines as shown by dashed corner ticks
(17 meters north, 90 meters east).
There may be private inholdings within the boundaries of any
Federal and State Reservations shown on this map

PROVISIONAL MAP
Produced from original
manuscript drawings. Informa-
tion shown as of date of
field check.

SCALE 1:24 000
KILOMETERS
METERS
MILES
CONTOUR INTERVAL 10 METERS
SUPPLEMENTARY CONTOUR INTERVAL 5 METERS
CONTROL ELEVATIONS SHOWN TO THE NEAREST 0.1 METER
OTHER ELEVATIONS SHOWN TO THE NEAREST METER
To convert meters to feet multiply by 3.2808
To convert feet to meters multiply by 0.3048
THIS MAP COMPLIES WITH NATIONAL MAP ACCURACY STANDARDS
FOR SALE BY U.S. GEOLOGICAL SURVEY, DENVER COLORADO 80225, OR RESTON, VIRGINIA 22092

1	2	3	1	Straylor Lake
2	3	4	2	Bullard Lakes
3	4	5	3	Sheephead
4	5	6	4	Harvey Mtn.
5	6	7	5	Spaulding Tract
6	7	8	6	Pine Creek Valley
7	8	9	7	Antelope Mtn.
8	9	10	8	Pikes Point

CONTOURS AND ELEVATIONS IN METERS
ROAD LEGEND
Improved Road
Unimproved Road
Trail
Interstate Route
U.S. Route
State Route

CHAMPS FLAT, CALIF.
PROVISIONAL EDITION 1983

40120-F8-TM-024