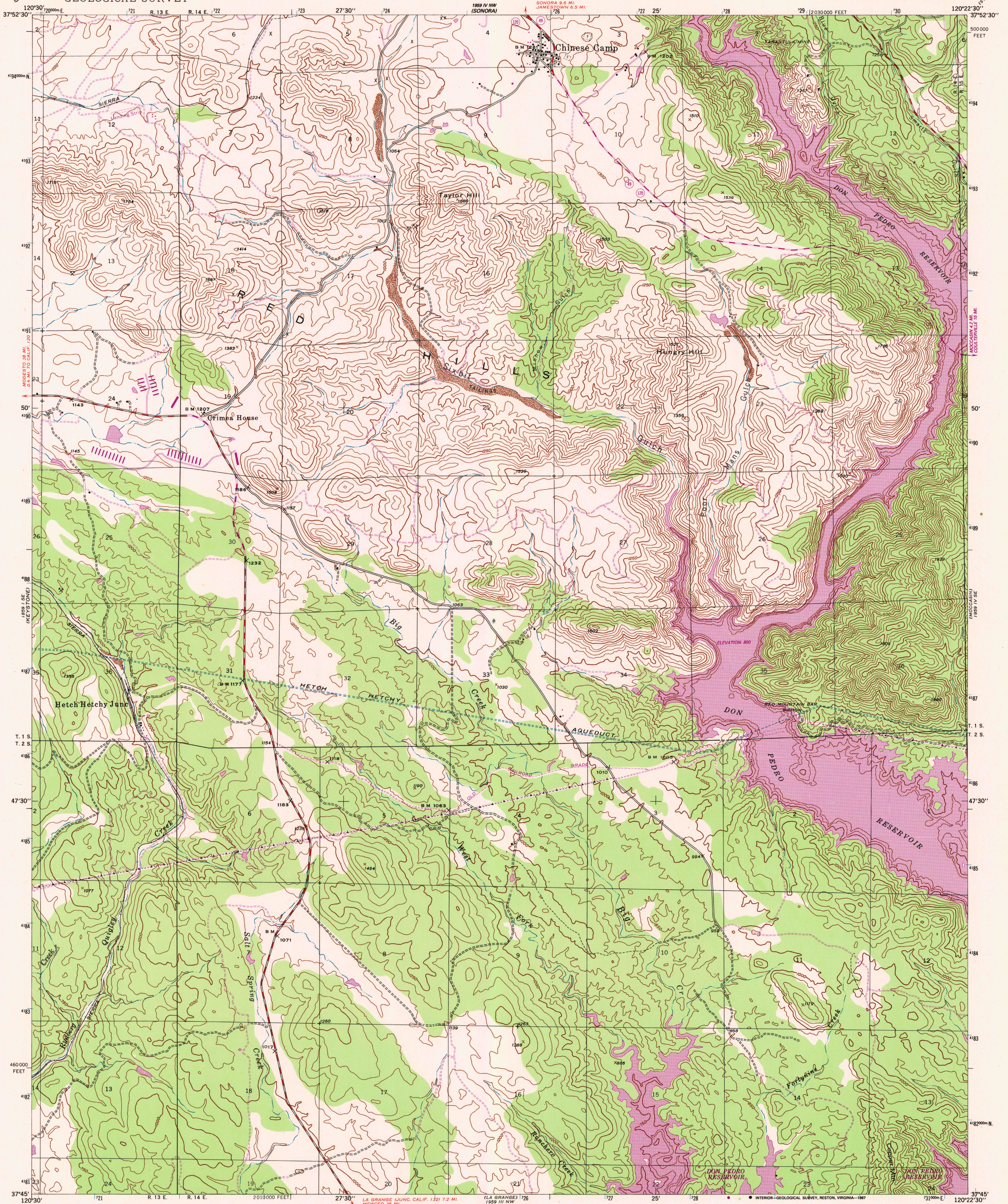


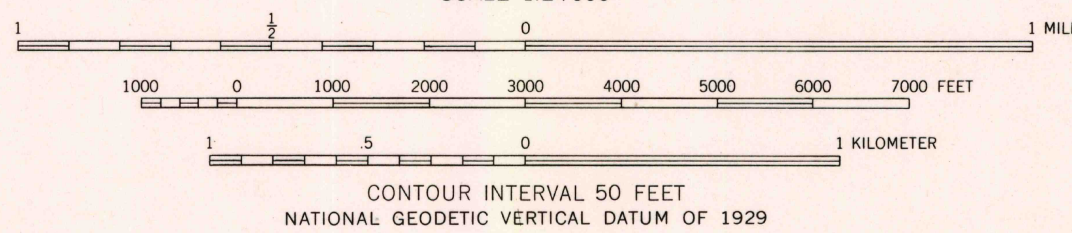
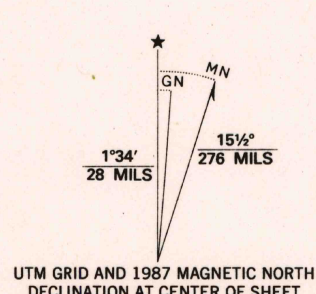
UNITED STATES
DEPARTMENT OF THE INTERIOR
GEOLOGICAL SURVEY

CHINESE CAMP QUADRANGLE
CALIFORNIA—TUOLUMNE CO.
7.5 MINUTE SERIES (TOPOGRAPHIC)



Mapped, edited, and published by the Geological Survey

Control by USGS and USC&GS
Topography by photogrammetric methods from aerial photographs taken 1945. Field checked 1947
Polyconic projection. 1927 North American datum
10,000-foot grid based on California coordinate system, zone 3
1000-meter Universal Transverse Mercator grid ticks, zone 10, shown in blue
To place on the predicted North American Datum 1983, move the projection lines 12 meters north and 90 meters east as shown by dashed corner ticks
Revisions shown in purple compiled from aerial photographs taken 1984 and other sources
This information not field checked. Map edited 1987



FOR SALE BY U.S. GEOLOGICAL SURVEY, DENVER, COLORADO 80225, OR RESTON, VIRGINIA 22092
A FOLDER DESCRIBING TOPOGRAPHIC MAPS AND SYMBOLS IS AVAILABLE ON REQUEST

ROAD CLASSIFICATION
Secondary highway, all weather, Light-duty road, all weather, hard surface
Unimproved road, fair or dry weather
State Route



CHINESE CAMP, CALIF.
37120-G4-TF-024

1947
PHOTOREVISED 1987
DMA 1959 IV SW-SERIES V895