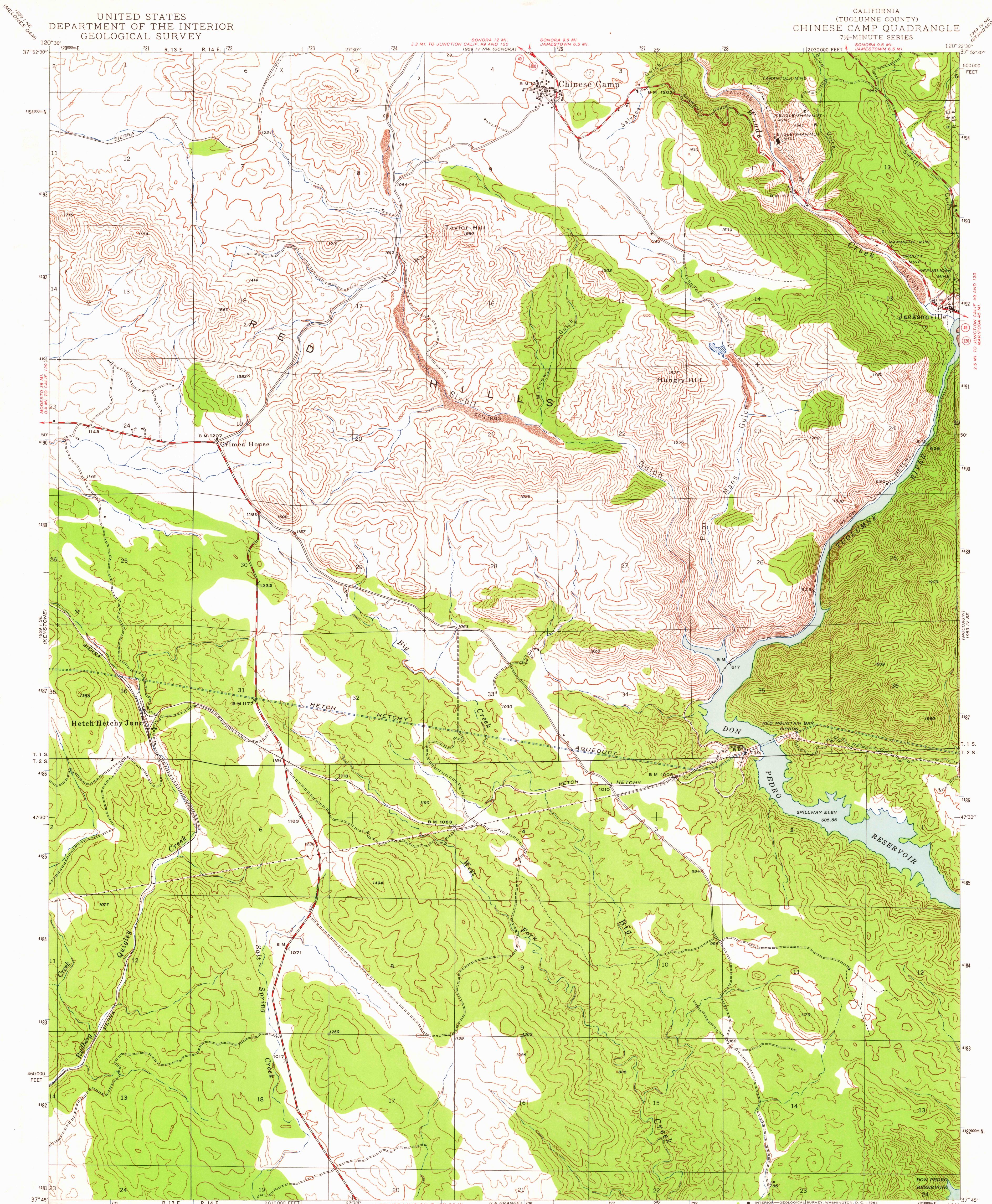


UNITED STATES
DEPARTMENT OF THE INTERIOR
GEOLOGICAL SURVEY

CALIFORNIA
(TUOLUMNE COUNTY)
CHINESE CAMP QUADRANGLE
7½-MINUTE SERIES



Maped by the Geological Survey
1946-1947

ROAD CLASSIFICATION
Medium duty ——— Light-duty ———
Unimproved dirt ———
State Route ———

UTM GRID AND 1947 MAGNETIC NORTH
DECLINATION AT CENTER OF SHEET
1° 34' 28" M
175° 31' 11" E

SCALE 1:24000
1 0 1000 2000 3000 4000 5000 6000 7000 FEET
1 0 5 10 KILOMETER
CONTOUR INTERVAL 50 FEET
DATUM IS MEAN SEA LEVEL

FOR SALE BY U. S. GEOLOGICAL SURVEY, DENVER 25, COLORADO OR WASHINGTON 25, D. C.
A FOLDER DESCRIBING TOPOGRAPHIC MAPS AND SYMBOLS IS AVAILABLE ON REQUEST

Polycyclic projection. 1927 North American datum
10,000-foot grid based on California (3)
rectangular coordinate system
1000-meter Universal Transverse Mercator grid ticks,
zone 10, shown in blue

U.S.G.S.
FILE COPY
TOPOGRAPHIC DIVISION

CHINESE CAMP, CALIF.
N 3745—W 12022.5/7.5

1947
MS 1959 IV SW—SERIES V895

NOV 4 1964

3555