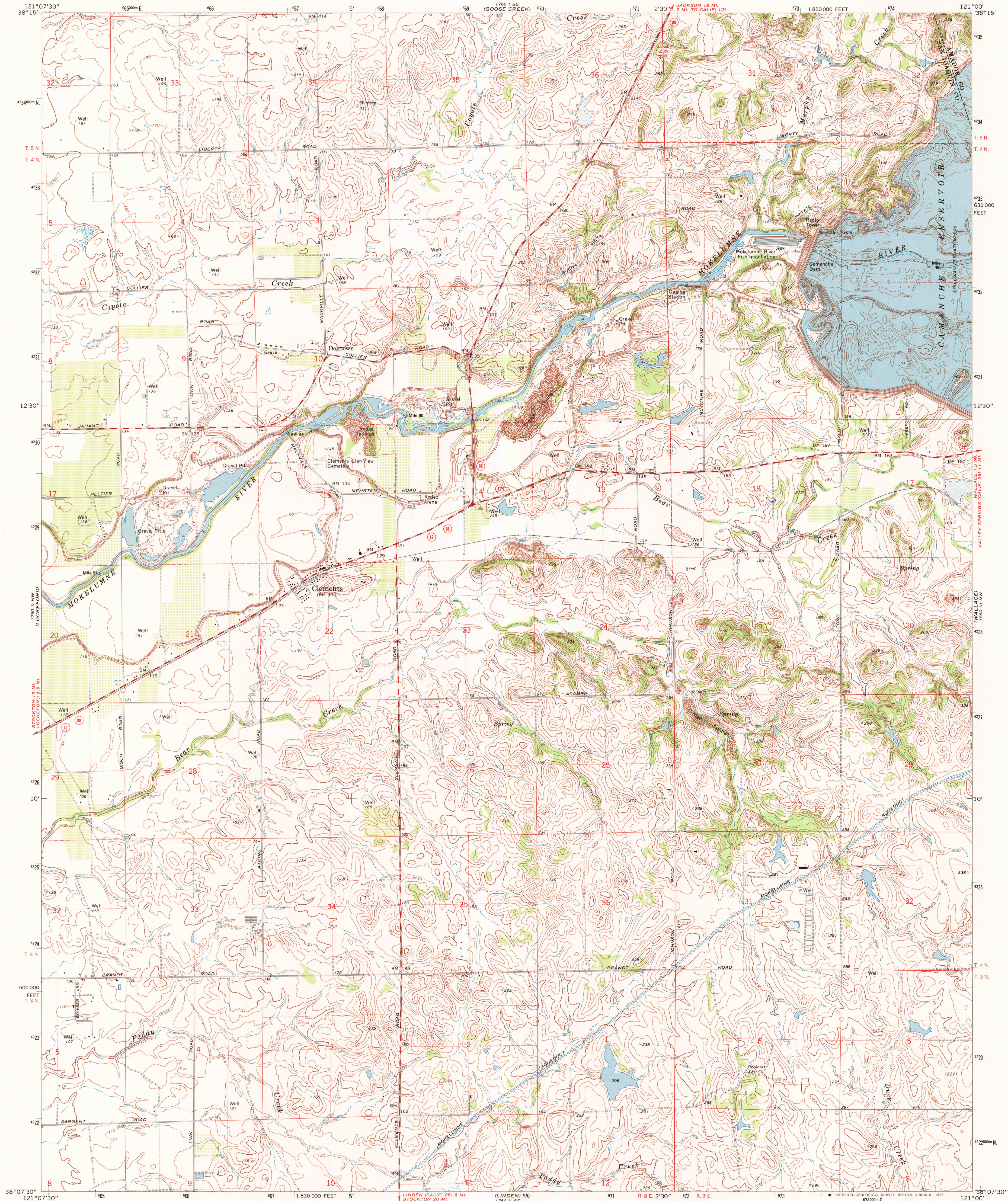


1760 II SW  
(LOCKFORD)

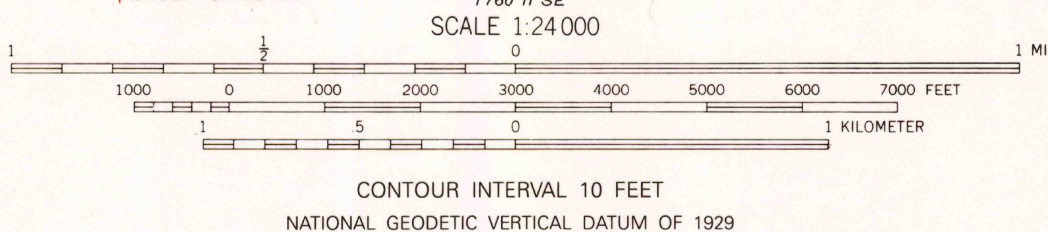
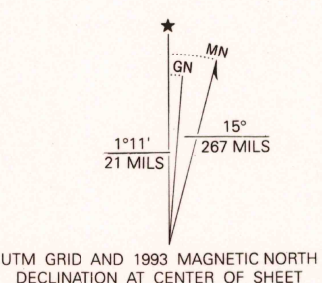
UNITED STATES  
DEPARTMENT OF THE INTERIOR  
GEOLOGICAL SURVEY

CLEMENTS QUADRANGLE  
CALIFORNIA  
7.5 MINUTE SERIES (TOPOGRAPHIC)

1760 IV SW  
(LOCKFORD)



Produced by the United States Geological Survey  
in cooperation with the California  
Department of Water Resources  
Control by USGS and NOS/NOAA  
Compiled from aerial photographs taken 1967. Field checked 1968  
Underwater contours by East Bay Municipal Utility District  
North American Datum of 1927 (NAD 27). Projection and  
10 000-foot grid ticks: California Coordinate System,  
zone 3 (Lambert Conformal Conic)  
1000-meter Universal Transverse Mercator grid ticks, zone 10  
shown in blue  
The difference between NAD 27 and North American Datum of  
1983 (NAD 83) for 7.5 minute intersections is given in USGS  
Bulletin 1875. The NAD 83 is shown by dashed corner ticks  
Fine red dashed lines indicate selected fence lines  
Photosinspected from 1991 source; no major culture  
or drainage changes observed. Boundaries and names  
verified 1993



ROAD CLASSIFICATION	
Primary highway, hard surface	Light-duty road, hard or improved surface
Secondary highway, hard surface	Unimproved road
Interstate Route	U. S. Route
	State Route

CLEMENTS, CALIF.  
38121-B1-TF-024

1968  
MINOR REVISION 1993  
DMA 1760 II NE-SERIES V895