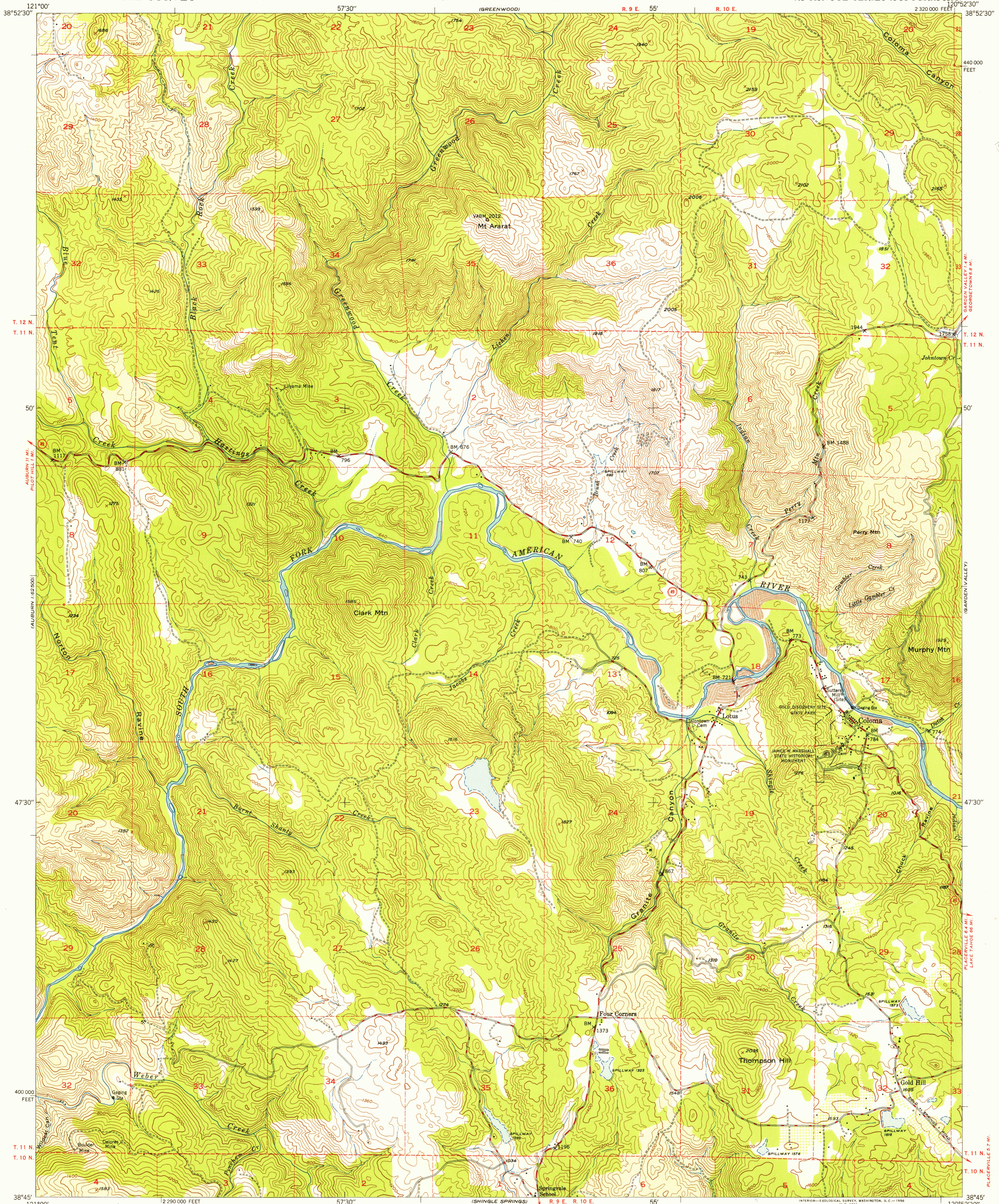


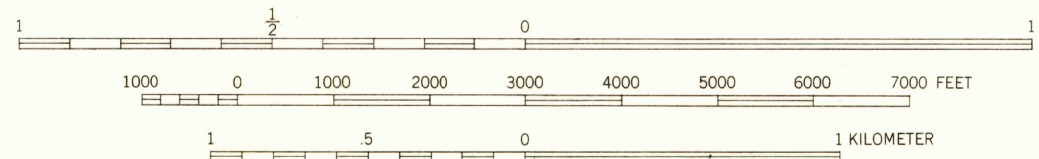
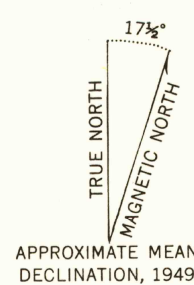
UNITED STATES
DEPARTMENT OF THE INTERIOR
GEOLOGICAL SURVEY

STATE OF CALIFORNIA
REPRESENTED BY THE
DIRECTOR OF PUBLIC WORKS

COLOMA QUADRANGLE
CALIFORNIA-EL DORADO CO.
7.5 MINUTE SERIES (TOPOGRAPHIC)



Mapped, edited, and published by the Geological Survey
Control by USGS and USC&GS
Topography from aerial photographs by multiplex methods
Aerial photographs taken 1946. Field check 1949
Polyconic projection. 1927 North American datum
10,000-foot grid based on California coordinate system,
zone 2
Dashed land lines indicate approximate location



CONTOUR INTERVAL 40 FEET
DATUM IS MEAN SEA LEVEL

THIS MAP COMPLIES WITH NATIONAL MAP ACCURACY STANDARDS
FOR SALE BY U. S. GEOLOGICAL SURVEY, FEDERAL CENTER, DENVER, COLORADO OR WASHINGTON 25, D. C.
A FOLDER DESCRIBING TOPOGRAPHIC MAPS AND SYMBOLS IS AVAILABLE ON REQUEST

U.S.G.S.
Historical File
Topographic Division

ROAD CLASSIFICATION
HARD-SURFACE ALL WEATHER ROADS
Heavy-duty ——— **4 LANE IS LANE**
Medium-duty ——— **4 LANE IS LANE**
Loose-surface, graded, or narrow hard-surface ———
U. S. Route ———
State Route ———
DRY WEATHER ROADS
Improved dirt ———
Unimproved dirt ———

COLOMA, CALIF.
N3845-W12052.5/7.5
1949

JAN 13 1956

6265