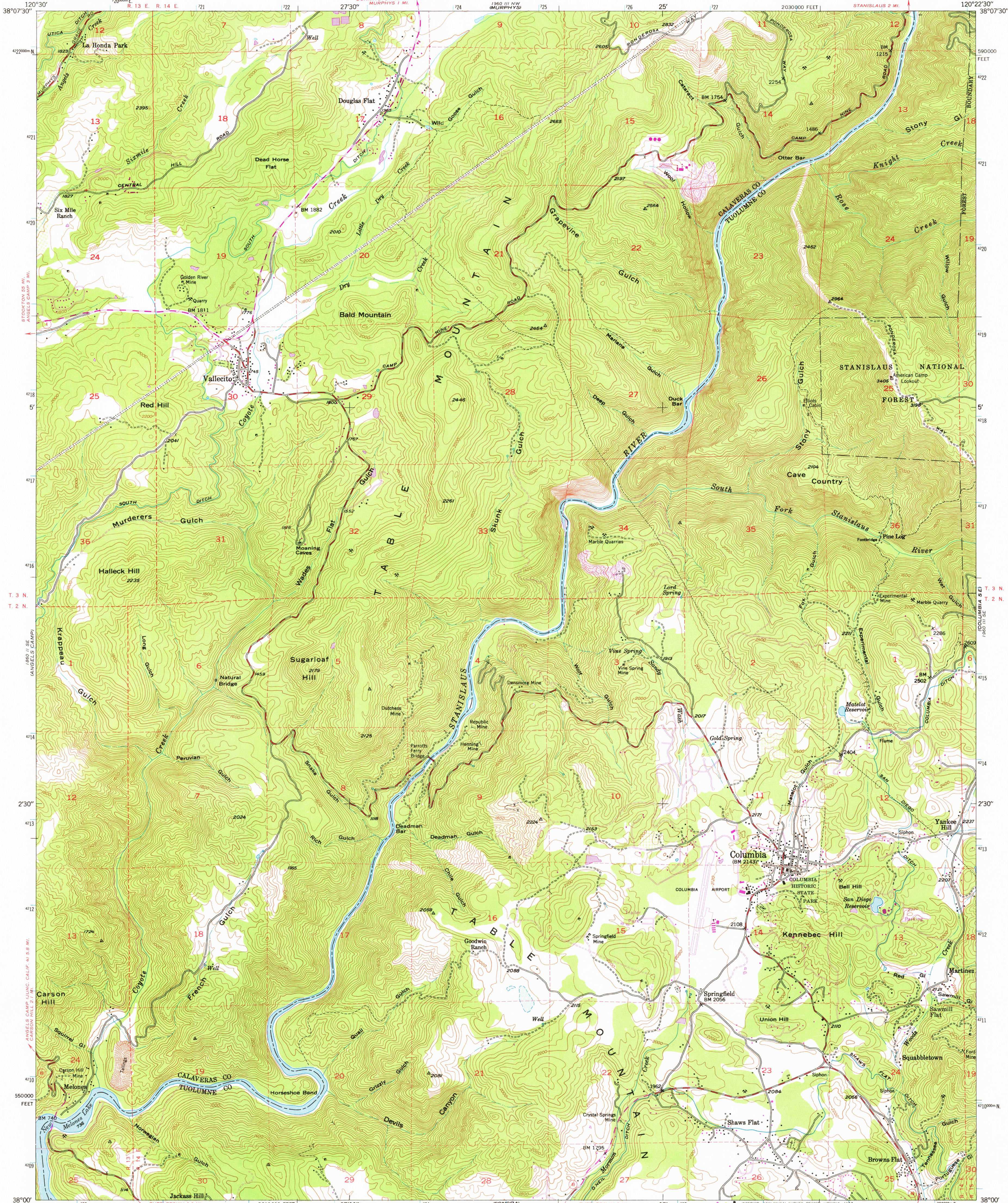


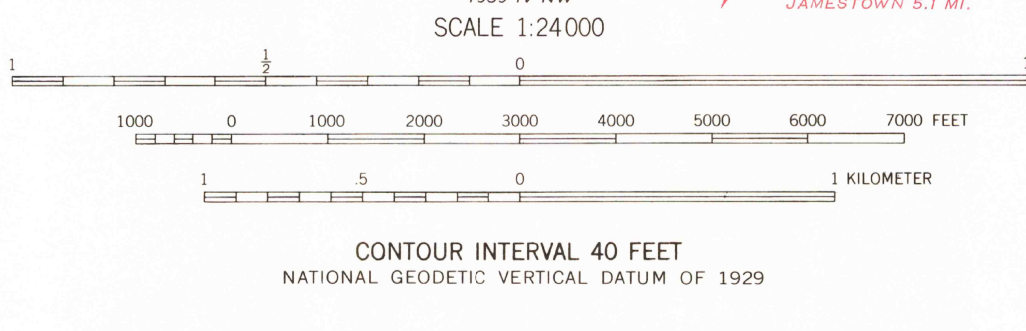
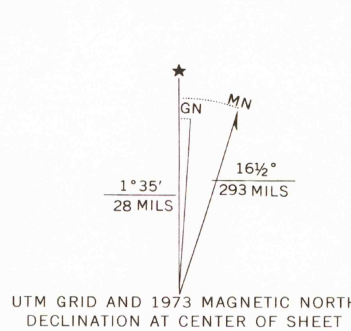
UNITED STATES  
DEPARTMENT OF THE INTERIOR  
GEOLOGICAL SURVEY

STATE OF CALIFORNIA  
REPRESENTED BY THE  
DIRECTOR OF PUBLIC WORKS

COLUMBIA QUADRANGLE  
CALIFORNIA  
7.5 MINUTE SERIES (TOPOGRAPHIC)  
SW/4 COLUMBIA 15' QUADRANGLE



Mapped, edited, and published by the Geological Survey  
Control by USGS, USC&GS and US Army  
Topography from aerial photographs by multiplex methods  
Aerial photographs taken 1946. Field check 1948  
Polyconic projection. 1927 North American datum  
10,000-foot grid based on California coordinate system,  
zone 3  
1000-meter Universal Transverse Mercator grid ticks,  
zone 10, shown in blue  
Dashed land lines indicate approximate location  
Revisions shown in purple compiled from aerial photographs  
taken 1973. This information not field checked



USGS  
Historical File  
Topographic Division  
COLUMBIA, CALIF.  
SW/4 COLUMBIA 15' QUADRANGLE  
N3800-W12022.5/7.5  
1948  
PHOTOREVISED 1973  
AMS 1960 III SW-SERIES V895

MAY 23 1977  
5,200