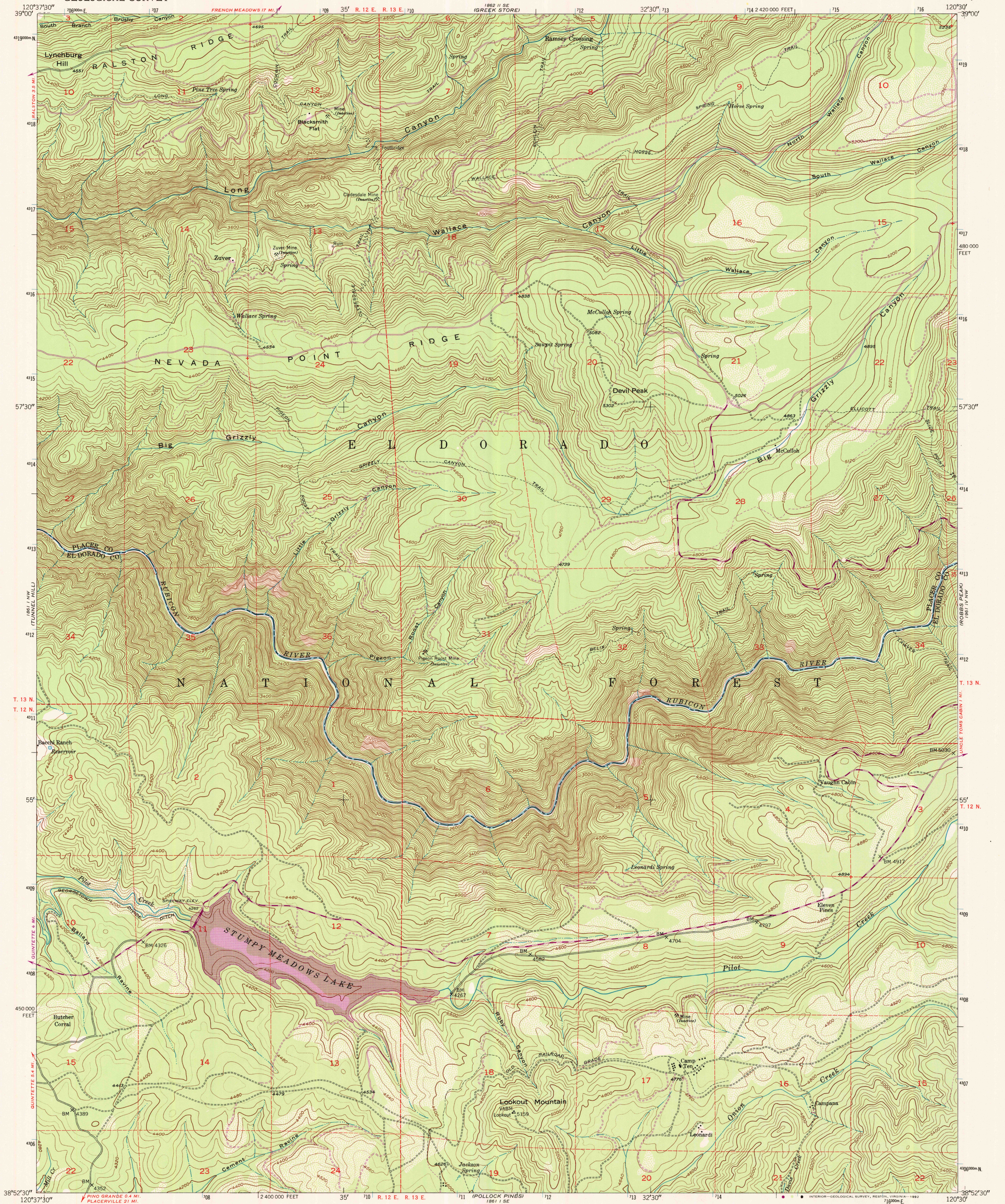


UNITED STATES
DEPARTMENT OF THE INTERIOR
GEOLOGICAL SURVEY

DEVIL PEAK QUADRANGLE
CALIFORNIA
7.5 MINUTE SERIES (TOPOGRAPHIC)



Mapped, edited, and published by the Geological Survey

Control by USGS and NOS/NOAA

Topography by photogrammetric methods from aerial photographs taken 1948. Field checked 1950

Polyconic projection. 1927 North American Datum

10,000-foot grid based on California coordinate system, zone 2

1000-meter Universal Transverse Mercator grid ticks, zone 10, shown in blue

To place on the predicted North American Datum 1983

move the projection lines 14 meters north and 89 meters east as shown by dashed corner ticks

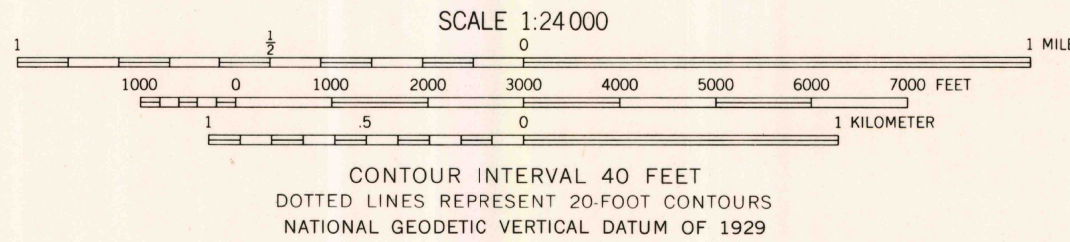
Dashed land lines indicate approximate location

Unchecked elevations are shown in brown

There may be private inholdings within the boundaries of the National or State reservations shown on this map

Revisions shown in purple compiled from aerial photographs taken 1973. This information not field checked

UTM GRID AND 1973 MAGNETIC NORTH DECLINATION AT CENTER OF SHEET



THIS MAP COMPLIES WITH NATIONAL MAP ACCURACY STANDARDS
FOR SALE BY U. S. GEOLOGICAL SURVEY, DENVER, COLORADO 80225, OR RESTON, VIRGINIA 22092
A FOLDER DESCRIBING TOPOGRAPHIC MAPS AND SYMBOLS IS AVAILABLE ON REQUEST

ROAD CLASSIFICATION
Heavy-duty ———— 4 LANE 16 LANE Light-duty ————
Medium-duty ———— 4 LANE 16 LANE Unimproved dirt ————
U. S. Route State Route



DEVIL PEAK, CALIF.

38120-H5-TF-024

1950
PHOTOREVISED 1973
DMA 1661 I NE-SERIES V895