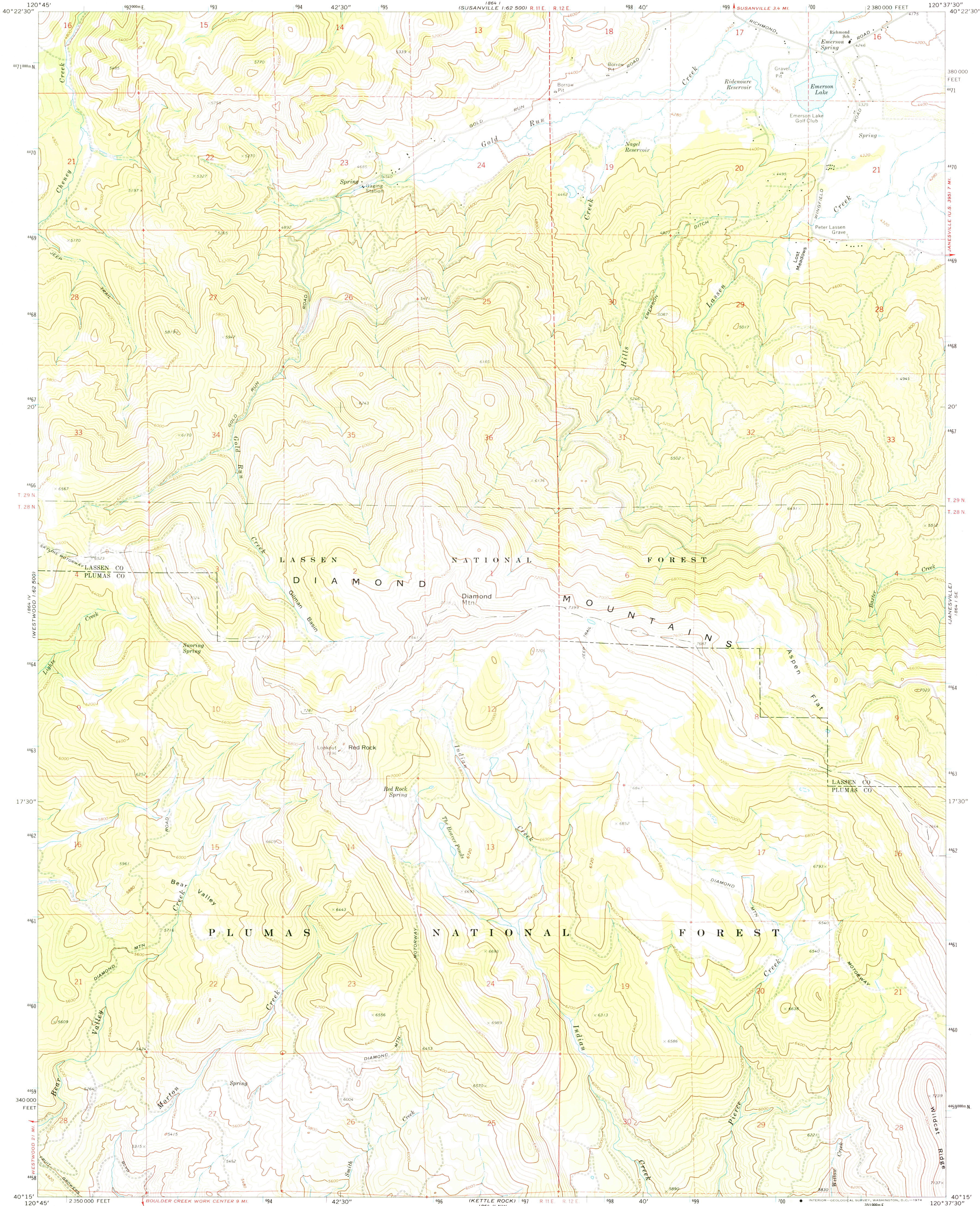
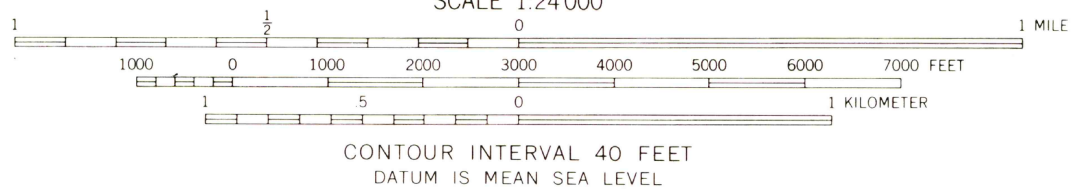
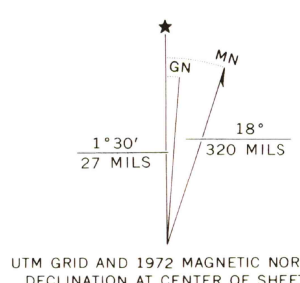


UNITED STATES  
DEPARTMENT OF THE INTERIOR  
GEOLOGICAL SURVEY

DIAMOND MTN. QUADRANGLE  
CALIFORNIA  
7.5 MINUTE SERIES (TOPOGRAPHIC)  
SW 1/4 SUSANVILLE 15' QUADRANGLE



Mapped, edited, and published by the Geological Survey  
in cooperation with the U. S. Forest Service  
Control by USGS, USC&GS, and USFS  
Topography by photogrammetric methods from aerial  
photographs taken 1965. Field checked 1972  
Projection and 10,000-foot grid ticks: California coordinate  
system, zone 1 (Lambert conformal conic)  
1000-meter Universal Transverse Mercator grid ticks,  
zone 10, shown in blue. 1927 North American datum



ROAD CLASSIFICATION  
Primary highway, hard surface  
Secondary highway, hard surface  
Unimproved road  
Interstate Route  
U. S. Route  
State Route



DIAMOND MTN., CALIF.  
SW 1/4 SUSANVILLE 15' QUADRANGLE  
N4015-W12037.5/7.5

1972

AMS 1864 I SW--SERIES V895

THIS MAP COMPLIES WITH NATIONAL MAP ACCURACY STANDARDS  
FOR SALE BY U. S. GEOLOGICAL SURVEY, DENVER, COLORADO 80225, OR WASHINGTON, D. C. 20242  
A FOLDER DESCRIBING TOPOGRAPHIC MAPS AND SYMBOLS IS AVAILABLE ON REQUEST

USGS  
Historical File  
Topographic Division

APR 16 1974

3620