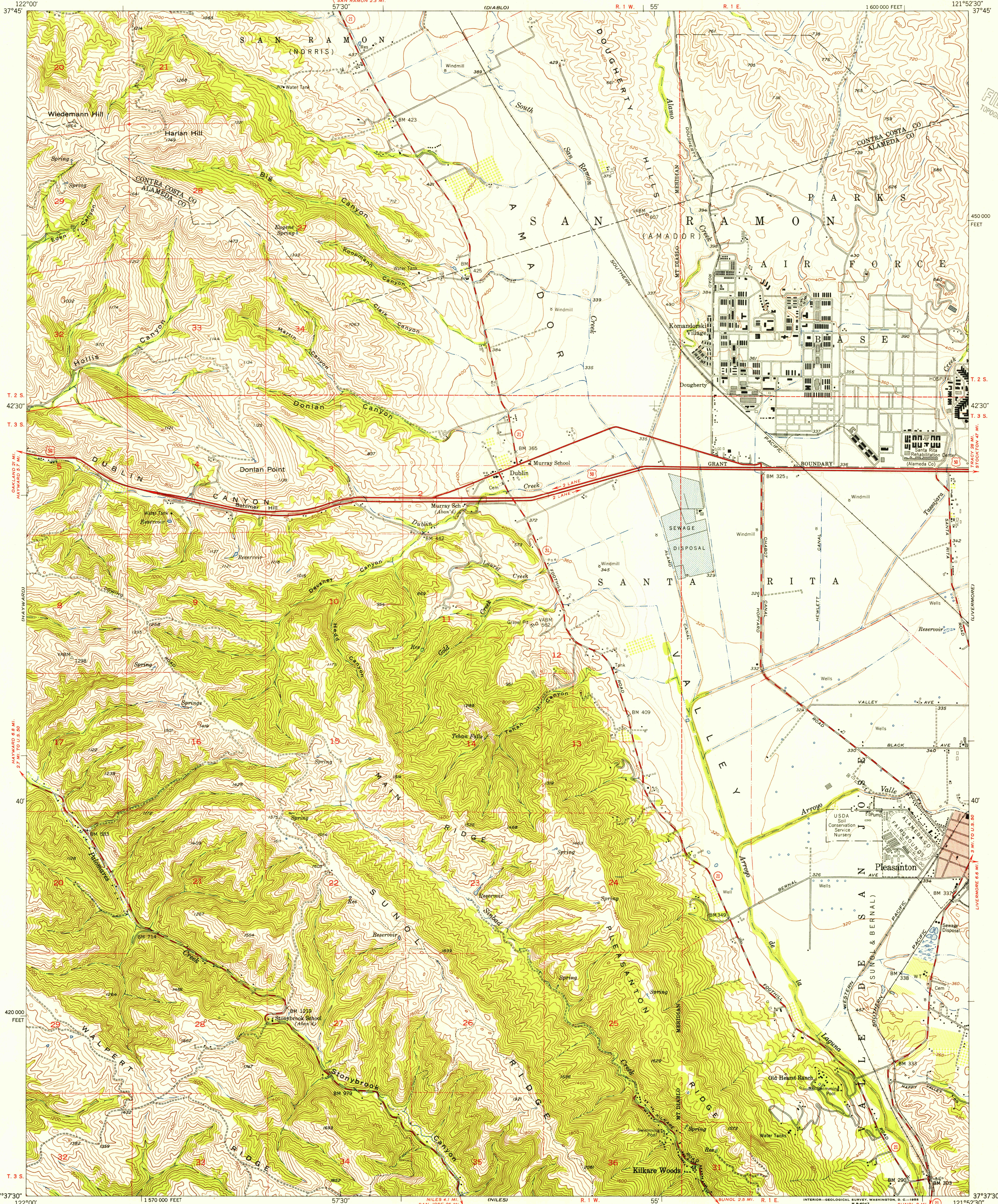


UNITED STATES  
DEPARTMENT OF THE INTERIOR  
GEOLOGICAL SURVEY

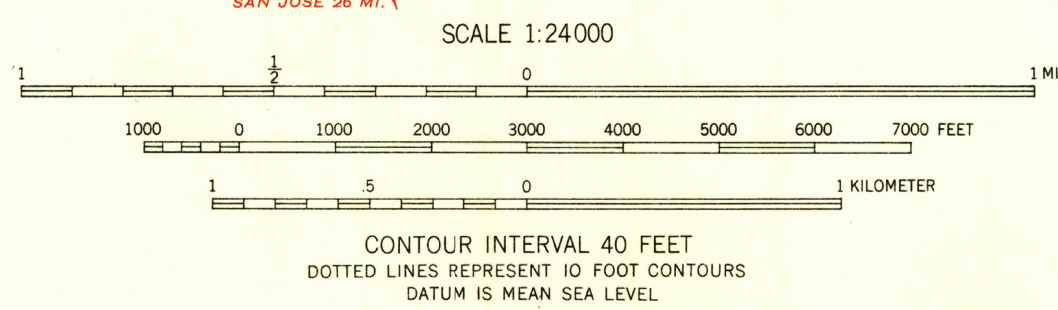
STATE OF CALIFORNIA  
GOODWIN J. KNIGHT, GOVERNOR  
FRANK B. DURKEE, DIRECTOR OF PUBLIC WORKS  
A. D. EDMONSTON, STATE ENGINEER

DUBLIN QUADRANGLE  
CALIFORNIA  
7.5 MINUTE SERIES (TOPOGRAPHIC)  
NW/4 PLEASANTON 15' QUADRANGLE  
1:600 000 FEET



Mapped, edited, and published by the Geological Survey  
Control by USGS, USC&GS, and Alameda County  
Topography from aerial photographs by multiplex methods  
and by plane-table surveys 1953. Aerial photographs taken 1949  
Polyconic projection. 1927 North American datum  
10,000-foot grid based on California coordinate system, zone 3  
Dashed land lines indicate approximate locations  
Red tint indicates areas in which only landmark buildings are shown

TRUE NORTH  
MAGNETIC NORTH  
APPROXIMATE MEAN  
DECLINATION, 1953



THIS MAP COMPLIES WITH NATIONAL MAP ACCURACY STANDARDS  
FOR SALE BY U. S. GEOLOGICAL SURVEY, FEDERAL CENTER, DENVER, COLORADO OR WASHINGTON 25, D. C.  
A FOLDER DESCRIBING TOPOGRAPHIC MAPS AND SYMBOLS IS AVAILABLE ON REQUEST

USGS  
Historical File  
Topographic Division

ROAD CLASSIFICATION  
Heavy-duty 4 LANE 6 LANE Light-duty  
Medium-duty 4 LANE 6 LANE Unimproved dirt  
U. S. Route State Route



U.S.G.S.  
FILE COPY  
TOPOGRAPHIC DIVISION

DUBLIN, CALIF.  
NW/4 PLEASANTON 15' QUADRANGLE  
N3737.5-W12152.5/7.5  
1953