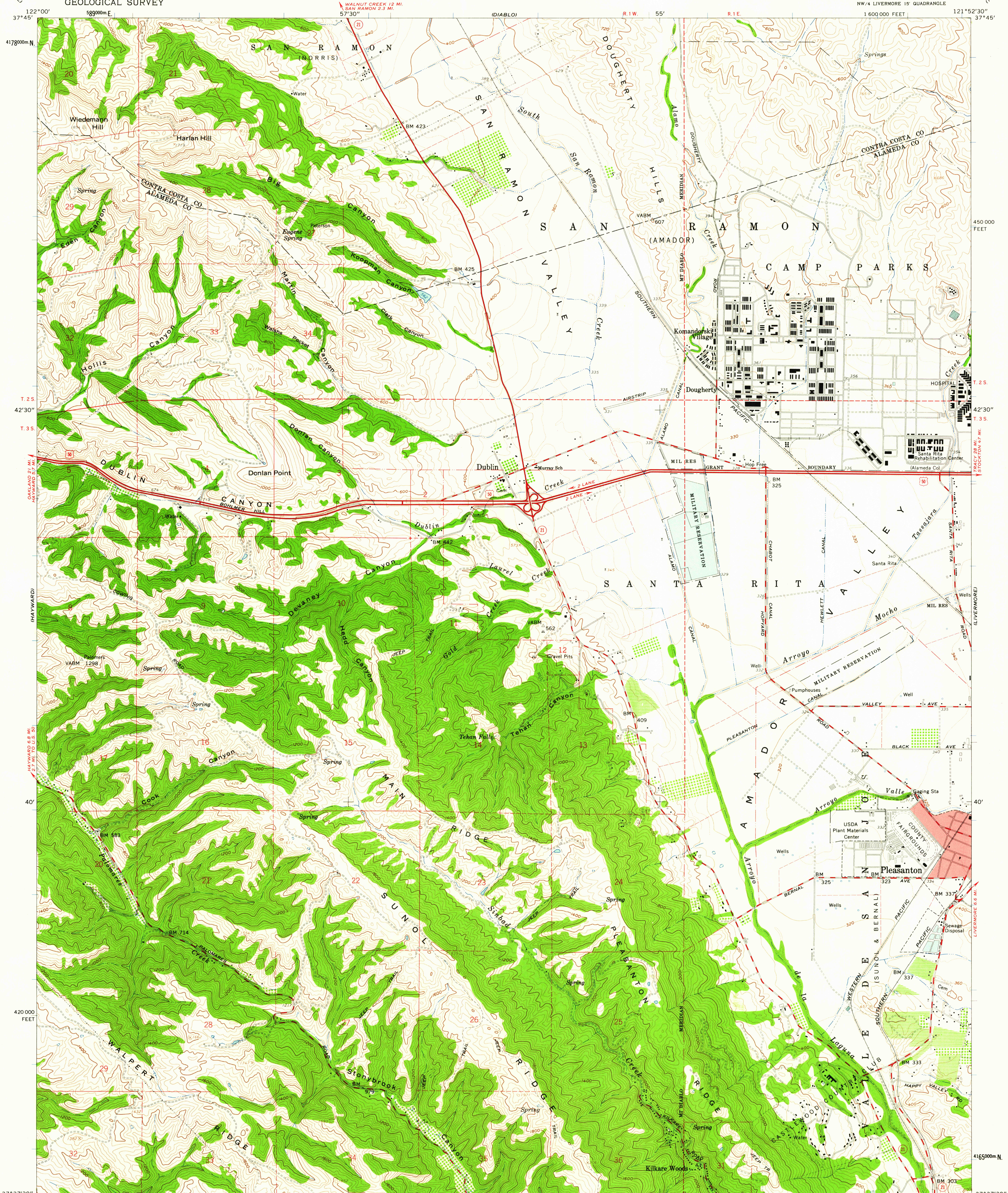


UNITED STATES
DEPARTMENT OF THE INTERIOR
GEOLOGICAL SURVEY

DUBLIN QUADRANGLE
CALIFORNIA
7.5 MINUTE SERIES (TOPOGRAPHIC)



Mapped, edited, and published by the Geological Survey
with cooperation by the California Department of Water Resources

Control by USGS, USC&GS, and Alameda County

Topography from aerial photographs by photogrammetric methods
and by plane-table surveys 1953. Aerial photographs taken 1949
Revised from aerial photographs taken 1960. Field check 1961

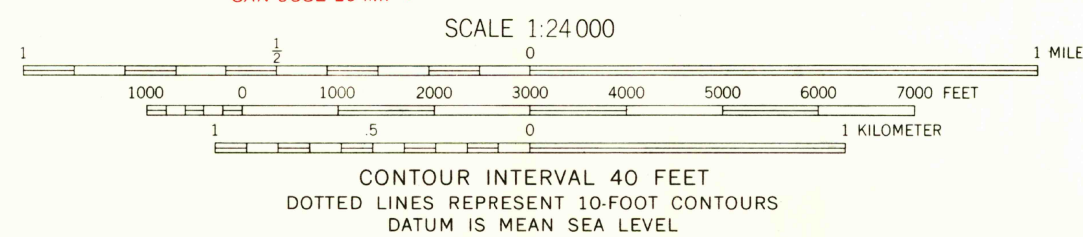
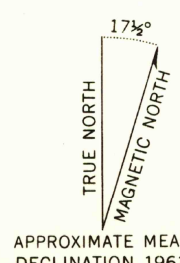
Polyconic projection. 1927 North American datum
10,000-foot grid based on California coordinate system, zone 3
1000-meter Universal Transverse Mercator grid ticks, zone 10,
shown in blue

Red tint indicates area in which only landmark buildings are shown

Dashed land lines indicate approximate locations

Land lines unsurveyed in parts of T. 3 S.-R. 1 W.

Fine red dashed lines indicate selected fence lines



THIS MAP COMPLIES WITH NATIONAL MAP ACCURACY STANDARDS
FOR SALE BY U. S. GEOLOGICAL SURVEY, DENVER 25, COLORADO OR WASHINGTON 25, D. C.
A FOLDER DESCRIBING TOPOGRAPHIC MAPS AND SYMBOLS IS AVAILABLE ON REQUEST

USGS
Historical File
Topographic Division



QUADRANGLE LOCATION

ROAD CLASSIFICATION	
Heavy-duty	Light-duty
Medium-duty	Unimproved dirt
U.S. Route	State Route

U.S.G.S.
FILE COPY
TOPOGRAPHIC DIVISION

DUBLIN, CALIF.
NW/4 LIVERMORE 15 QUADRANGLE
N3737.5-W12152.5/7.5

1961

DEC 14 1961