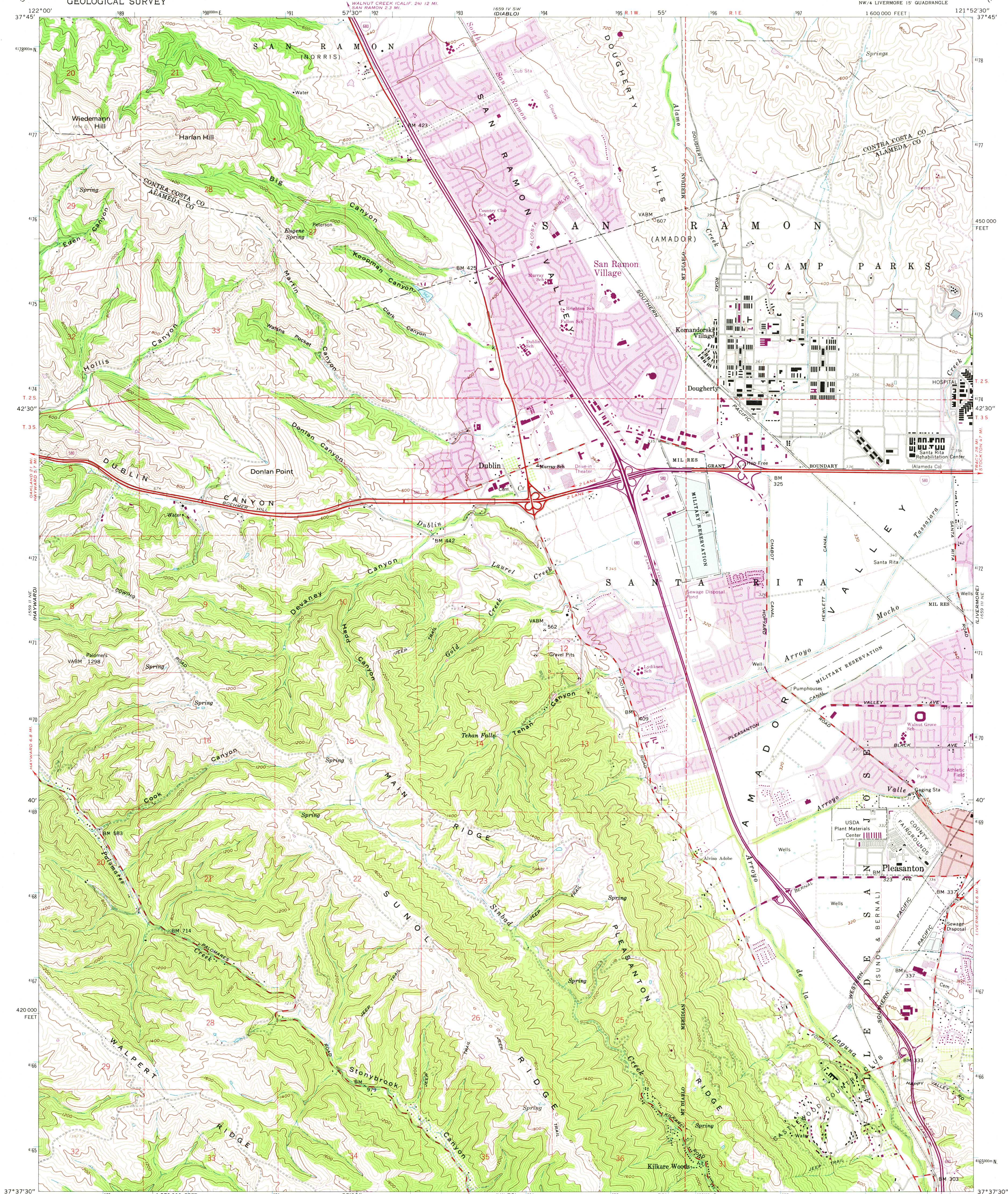


UNITED STATES
DEPARTMENT OF THE INTERIOR
GEOLOGICAL SURVEY

DUBLIN QUADRANGLE
CALIFORNIA
7.5 MINUTE SERIES (TOPOGRAPHIC)

NW 1/4 LIVERMORE 15' QUADRANGLE

1:60,000 FEET



Mapped, edited, and published by the Geological Survey with cooperation by the California Department of Water Resources

Control by USGS, USC&GS, and Alameda County

Topography from aerial photographs by photogrammetric methods and by planetable surveys 1953. Aerial photographs taken 1949 Revised from aerial photographs taken 1960. Field check 1961

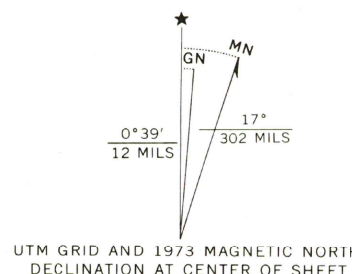
Polyconic projection. 1927 North American datum 10,000-foot grid based on California coordinate system, zone 3 1000-meter Universal Transverse Mercator grid ticks, zone 10, shown in blue

Red tint indicates area in which only landmark buildings are shown

Dashed land lines indicate approximate locations

Land lines unsurveyed in parts of T. 3 S.-R. 1 W.

Fine red dashed lines indicate selected fence lines



SCALE 1:24,000

1 000 0 1000 2000 3000 4000 5000 6000 7000 FEET

1 0 1 2 3 4 5 6 7 KILOMETER

CONTOUR INTERVAL 40 FEET

DOTTED LINES REPRESENT 10-FOOT CONTOURS

DATUM IS MEAN SEA LEVEL

THIS MAP COMPLIES WITH NATIONAL MAP ACCURACY STANDARDS

FOR SALE BY U. S. GEOLOGICAL SURVEY, DENVER, COLORADO 80225, OR RESTON, VIRGINIA 22092

A FOLDER DESCRIBING TOPOGRAPHIC MAPS AND SYMBOLS IS AVAILABLE ON REQUEST



UCGS
Historical File
Topographic Division

ROAD CLASSIFICATION
Heavy-duty ——— Light-duty ———
Medium-duty ——— Unimproved dirt ———
Interstate Route ——— U.S. Route ———

DUBLIN, CALIF.
NW 1/4 LIVERMORE 15' QUADRANGLE
N3737.5—W12152.5/7.5

1961
PHOTOREVISED 1968 AND 1973
AMS 1659 III NW—SERIES V895

Revisions shown in purple compiled from aerial photographs taken 1968 and 1973. This information not field checked. Purple tint indicates extension of urban areas