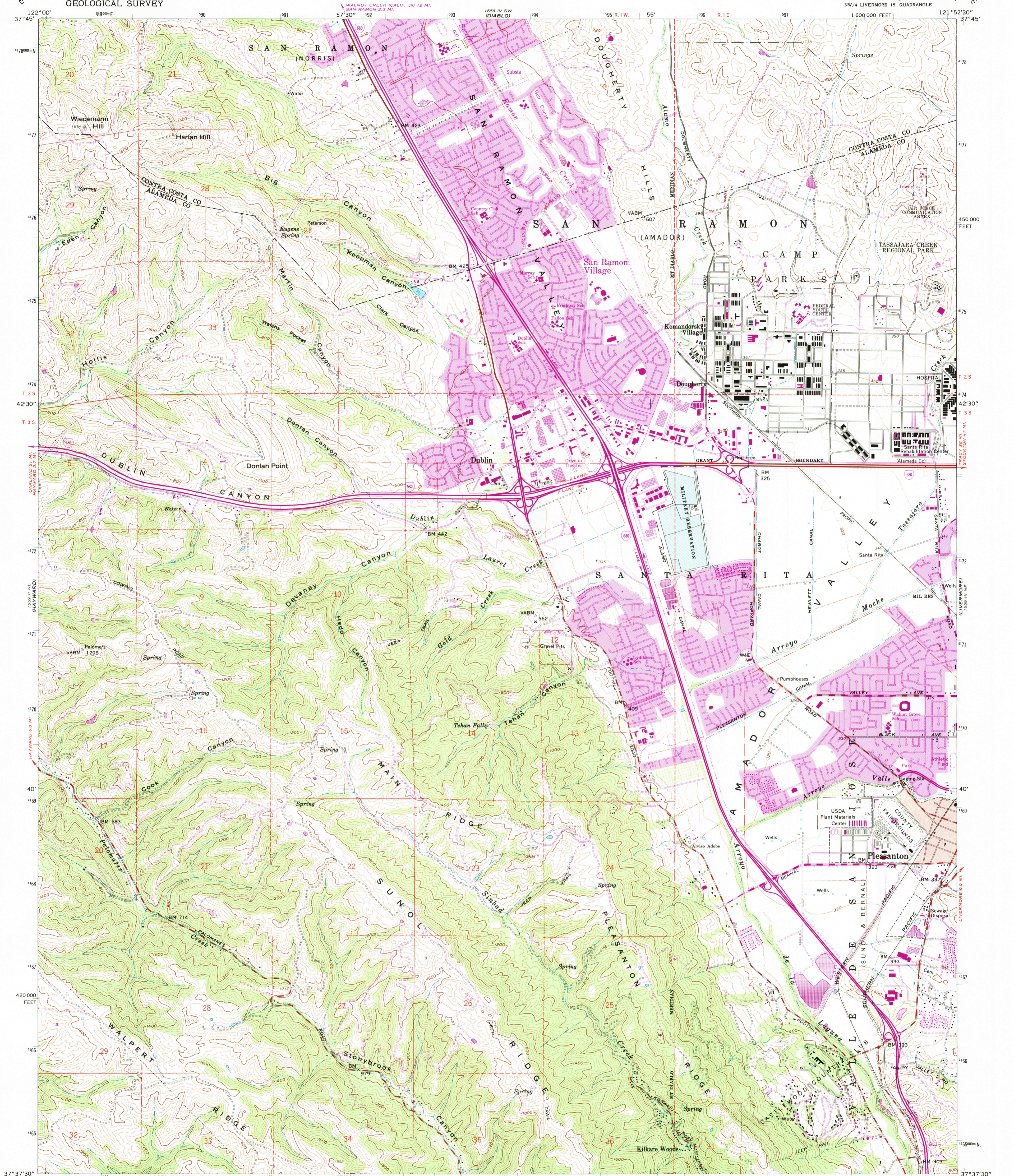


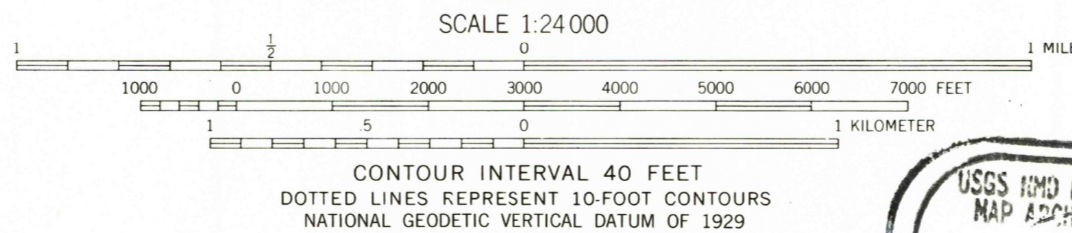
UNITED STATES
DEPARTMENT OF THE INTERIOR
GEOLOGICAL SURVEY

DUBLIN QUADRANGLE
CALIFORNIA
7.5 MINUTE SERIES (TOPOGRAPHIC)
NW 1/4 LIVERMORE 15' QUADRANGLE



Mapped, edited, and published by the Geological Survey with cooperation by the California Department of Water Resources Control by USGS, NOS/NOAA, and Alameda County. Topography from aerial photographs by photogrammetric methods and by planetable surveys 1953. Aerial photographs taken 1949. Revised from aerial photographs taken 1960. Field check 1961. Polyconic projection. 10,000-foot grid based on California coordinate system, zone 3. 1000-meter Universal Transverse Mercator grid ticks, zone 10, shown in blue. 1927 North American Datum. To place on the predicted North American Datum 1983 move the projection lines 1.5 meters north and 94 meters east as shown by dashed corner ticks. Red tint indicates area in which only landmark buildings are shown. Dashed land lines indicate approximate locations. Land lines unsurveyed in parts of T. 3 S., R. 1 W. Fine red dashed lines indicate selected fence lines. There may be private inholdings within the boundaries of the National or State reservations shown on this map.

Revisions shown in purple and woodland compiled from aerial photographs taken 1979 and other source data. This information not field checked. Map edited 1980.



THIS MAP COMPLIES WITH NATIONAL MAP ACCURACY STANDARDS FOR SALE BY U.S. GEOLOGICAL SURVEY, P.O. BOX 25286, DENVER, COLORADO 80226. A FOLDER DESCRIBING TOPOGRAPHIC MAPS AND SYMBOLS IS AVAILABLE ON REQUEST.



QUADRANGLE LOCATION

ROAD CLASSIFICATION
Heavy-duty ——— Light-duty ———
Medium-duty ——— Unimproved dirt ———
Interstate Route ——— U.S. Route ———

DUBLIN, CALIF.
NW 1/4 LIVERMORE 15' QUADRANGLE
N3737.5—W12152.5/7.5
1961
PHOTOREVISED 1980
DMA 1659 III NW—SERIES V895

