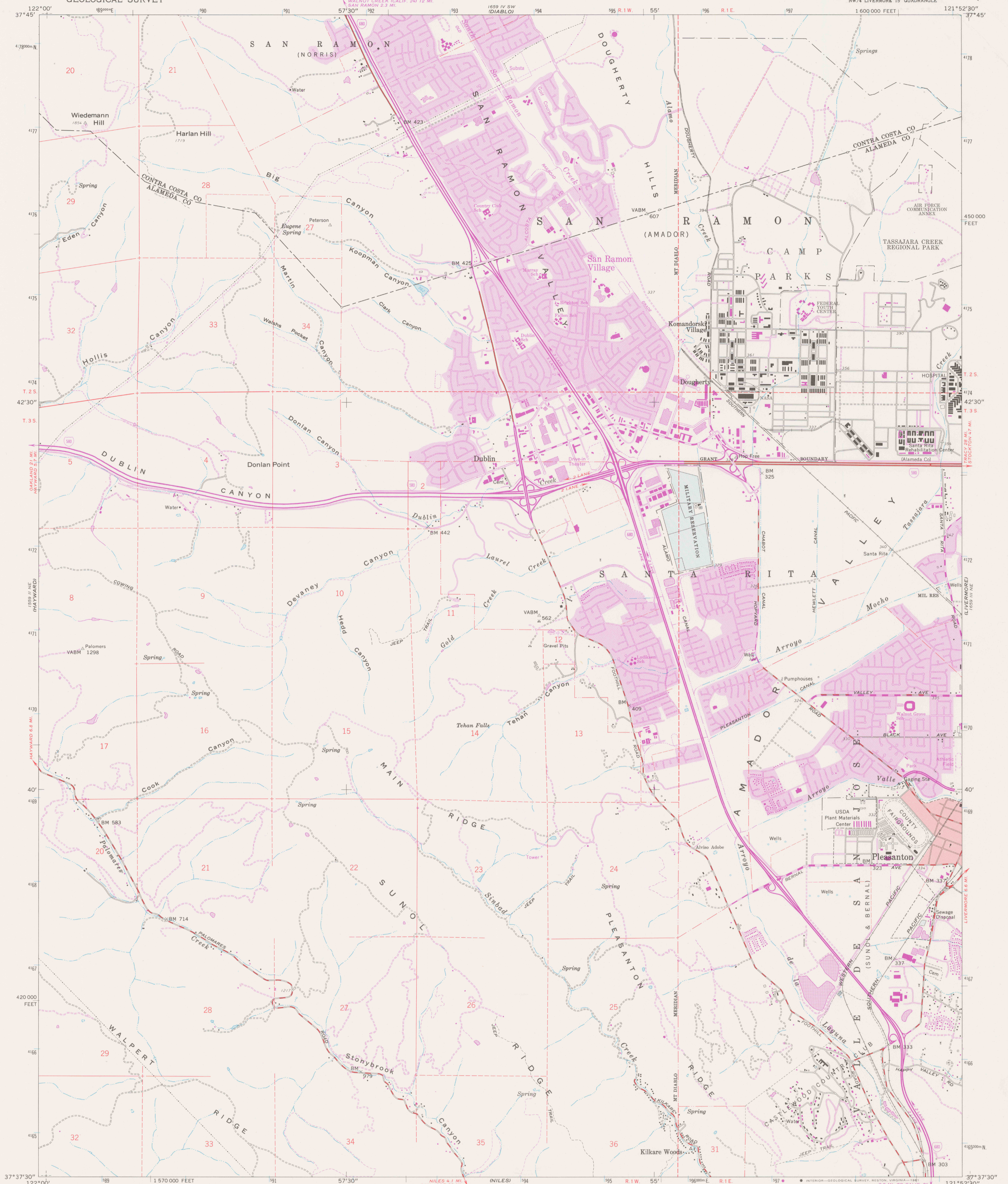


UNITED STATES  
DEPARTMENT OF THE INTERIOR  
GEOLOGICAL SURVEY

DUBLIN QUADRANGLE  
CALIFORNIA  
7.5 MINUTE SERIES (TOPOGRAPHIC)  
NW/4 LIVERMORE 15' QUADRANGLE



Mapped, edited, and published by the Geological Survey with cooperation by the California Department of Water Resources Control by USGS, NOS/NOAA, and Alameda County

Topography from aerial photographs by photogrammetric methods and by plane-table surveys 1953. Aerial photographs taken 1949. Revised from aerial photographs taken 1960. Field check 1961

Polyconic projection  
10,000-foot grid based on California coordinate system, zone 3  
1000-meter Universal Transverse Mercator grid ticks, zone 10, shown in blue. 1927 North American Datum  
To place on the predicted North American Datum 1983 move the projection lines 13 meters north and 94 meters east as shown by dashed corner ticks

Red tint indicates area in which only landmark buildings are shown  
Dashed and lines indicate approximate locations  
Land lines unsurveyed in parts of T. 3 S., R. 1 W.  
Fine red dashed lines indicate selected fence lines  
There may be private inholdings within the boundaries of the National or State reservations shown on this map

Revisions shown in purple and woodland compiled from aerial photographs taken 1979 and other source data  
This information not field checked. Map edited 1980

SCALE 1:24,000  
1 000 0 1000 2000 3000 4000 5000 6000 7000 FEET  
1 KILOMETER

CONTOUR INTERVAL 40 FEET  
DOTTED LINES REPRESENT 10-FOOT CONTOURS  
NATIONAL GEODETIC VERTICAL DATUM OF 1929

THIS MAP COMPLIES WITH NATIONAL MAP ACCURACY STANDARDS  
FOR SALE BY U.S. GEOLOGICAL SURVEY, DENVER, COLORADO 80225, OR RESTON, VIRGINIA 22092  
A FOLDER DESCRIBING TOPOGRAPHIC MAPS AND SYMBOLS IS AVAILABLE ON REQUEST

DO NOT CIRCULATE

ROAD CLASSIFICATION  
Heavy-duty ——— Light-duty ———  
Medium-duty ——— Unimproved dirt ———  
Interstate Route ——— U.S. Route ———

REFERENCE

DUBLIN, CALIF.  
NW/4 LIVERMORE 15' QUADRANGLE  
N3737.5—W12152.5/7.5

1961  
PHOTOREVISED 1980  
DMA 1659 III NW—SERIES V895

REF  
\$700+  
Var  
U5  
7.5  
ed. 1980  
rep. 1981 pp