

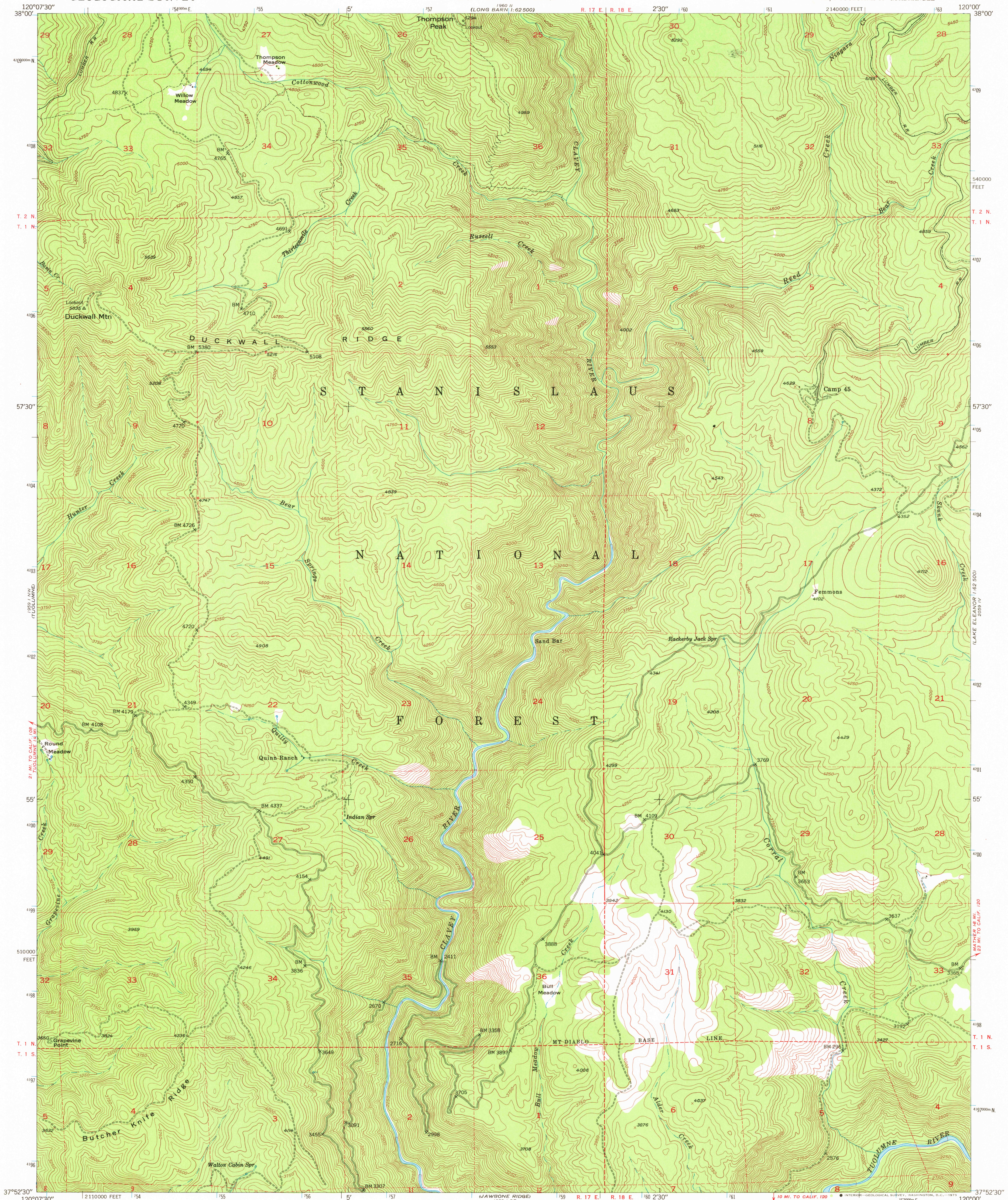
1016 1951
1016 1951
1016 1951

UNITED STATES
DEPARTMENT OF THE INTERIOR
GEOLOGICAL SURVEY

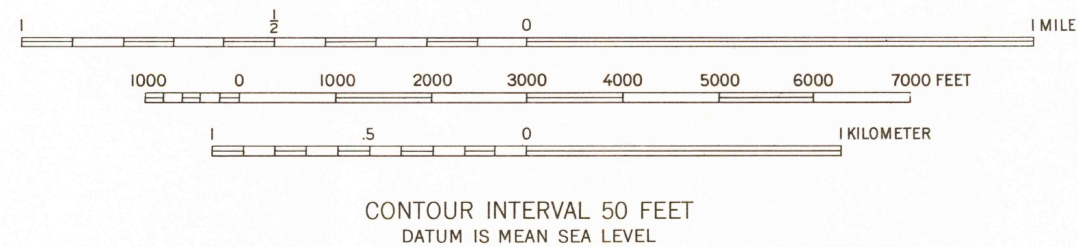
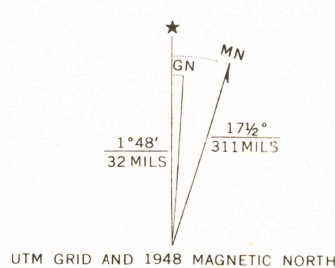
UNITED STATES
DEPARTMENT OF THE ARMY
CORPS OF ENGINEERS

DUCKWALL MTN. QUADRANGLE
CALIFORNIA—TUOLUMNE CO.
7.5 MINUTE SERIES (TOPOGRAPHIC)
NE/4 TUOLUMNE 15' QUADRANGLE

1016 1951
1016 1951
1016 1951



Maped, edited, and published by the Geological Survey
Control by USGS
Topography from aerial photographs by multiplex methods
Aerial photographs taken 1945. Field check 1948
Polyconic projection. 1927 North American datum
10,000-foot grid based on California coordinate system,
zone 3
1000-meter Universal Transverse Mercator grid ticks,
zone 10, shown in blue
Dashed land lines indicate approximate locations



CONTOUR INTERVAL 50 FEET
DATUM IS MEAN SEA LEVEL

THIS MAP COMPLIES WITH NATIONAL MAP ACCURACY STANDARDS
FOR SALE BY U. S. GEOLOGICAL SURVEY, DENVER, COLORADO 80225, OR WASHINGTON, D. C. 20242
A FOLDER DESCRIBING TOPOGRAPHIC MAPS AND SYMBOLS IS AVAILABLE ON REQUEST



QUADRANGLE LOCATION

USGS
HISTORICAL FILE
TOPOGRAPHIC DIVISION

ROAD CLASSIFICATION
Light-duty Unimproved dirt

DUCKWALL MTN., CALIF.
NE/4 TUOLUMNE 15' QUADRANGLE
N3752.5—W12000/7.5

1948

AMS 1959 I NE—SERIES V895

MAR 9 1973