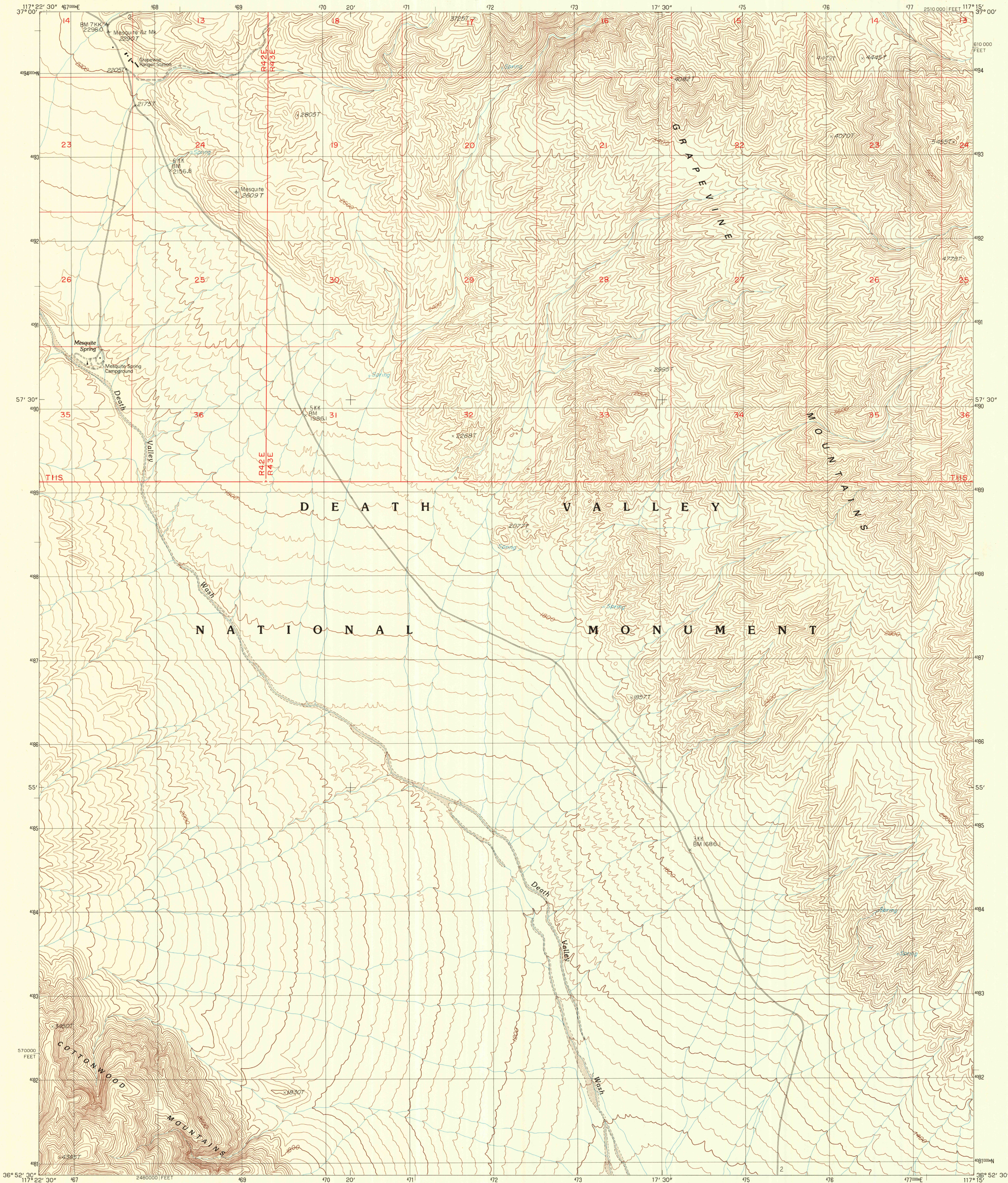


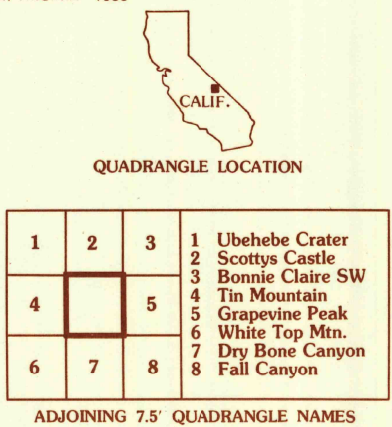
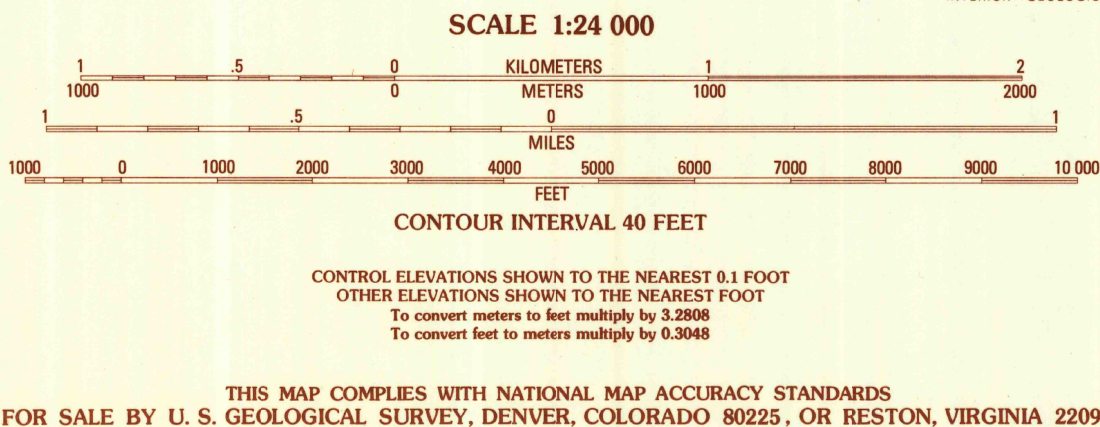
UNITED STATES
DEPARTMENT OF THE INTERIOR
GEOLOGICAL SURVEY

EAST OF TIN MOUNTAIN QUADRANGLE
CALIFORNIA—INYO CO.
7.5 MINUTE SERIES (TOPOGRAPHIC)



PRODUCED BY THE UNITED STATES GEOLOGICAL SURVEY
CONTROL BY USGS, NOS/NOAA
COMPILED FROM AERIAL PHOTOGRAPHS TAKEN 1976
FIELD CHECKED 1983. MAP EDITED 1988
PROJECTION LAMBERT CONFORMAL CONIC
GRID: 1000-METER UNIVERSAL TRANSVERSE MERCATOR ZONE 11
10,000-FOOT STATE GRID TICKS CALIFORNIA, ZONE 4
UTM GRID DECLINATION 011° WEST
1980 MAGNETIC NORTH DECLINATION 15° EAST
VERTICAL DATUM NATIONAL GEODETIC VERTICAL DATUM OF 1929
HORIZONTAL DATUM 1927 NORTH AMERICAN DATUM
To place on the predicted North American Datum of 1983,
move the projection lines as shown by dashed corner ticks
(9 meters north / 81 meters east)
There may be private inholdings within the boundaries of any
Federal and State Reservations shown on this map
No distinction made between houses, barns, and other buildings
Where omitted, land lines have not been established

PROVISIONAL MAP
Produced from original
manuscript drawings. Infor-
mation shown as of date of
photography.



ROAD LEGEND
Improved Road
Unimproved Road
Trail
Interstate Route U.S. Route State Route
EAST OF TIN MOUNTAIN, CALIF.
PROVISIONAL EDITION 1988
36117-H3-TF-024