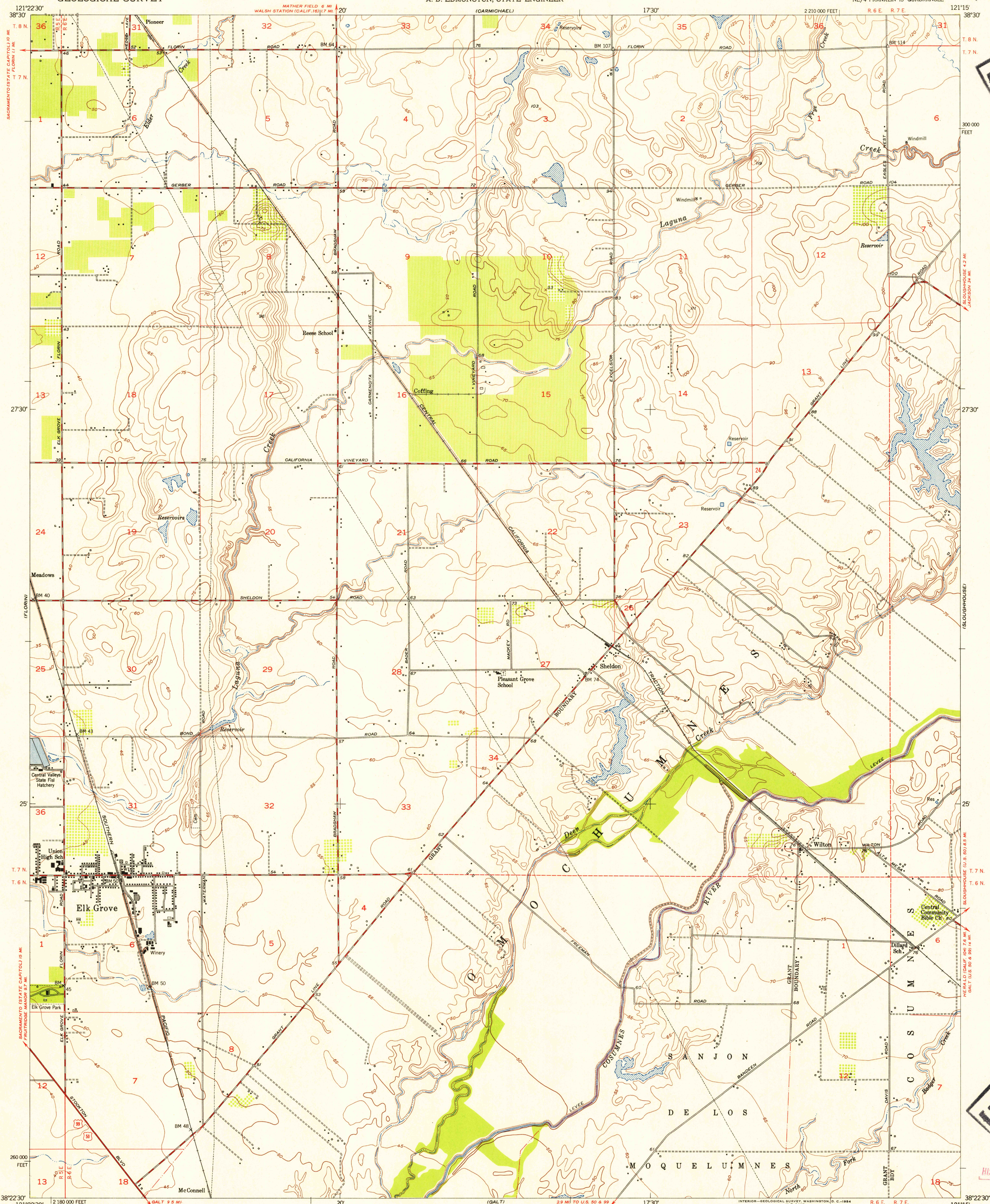


UNITED STATES  
DEPARTMENT OF THE INTERIOR  
GEOLOGICAL SURVEY

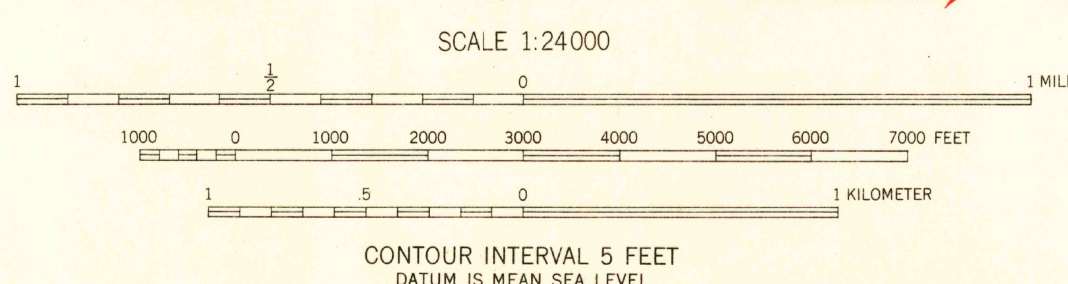
STATE OF CALIFORNIA  
GOODWIN J. KNIGHT, GOVERNOR  
FRANK B. DURKEE, DIRECTOR OF PUBLIC WORKS  
A. D. EDMONSTON, STATE ENGINEER

ELK GROVE QUADRANGLE  
CALIFORNIA-SACRAMENTO CO.  
7.5 MINUTE SERIES (TOPOGRAPHIC)  
NE/4 FRANKLIN 15' QUADRANGLE



Mapped, edited, and published by the Geological Survey  
Control by USGS and USC&GS  
Topography by plane-table surveys 1907  
Culture and drainage revised from aerial photographs  
taken 1949. Culture revision and field check 1952  
Polyconic projection, North American datum  
10,000-foot grid based on California coordinate system, zone 2  
Dashed land lines indicate approximate locations

TRUE NORTH  
MAGNETIC NORTH  
APPROXIMATE MEAN  
DECLINATION, 1952



USGS  
Historical File  
Topographic Division  
QUADRANGLE LOCATION  
CALIF.

ROAD CLASSIFICATION  
Heavy-duty 4 LANE 6 LANE Light-duty  
Medium-duty 4 LANE 6 LANE Unimproved dirt  
U. S. Route State Route

ELK GROVE, CALIF.  
NE/4 FRANKLIN 15' QUADRANGLE  
N3822.5-W12115.7.5

1952

FOR SALE BY U. S. GEOLOGICAL SURVEY, FEDERAL CENTER, DENVER, COLORADO OR WASHINGTON 25, D. C.  
A FOLDER DESCRIBING TOPOGRAPHIC MAPS AND SYMBOLS IS AVAILABLE ON REQUEST

FILE COPY  
Historical and Edition

HISTORICAL

HISTORICAL

MAY 25 1954

3185