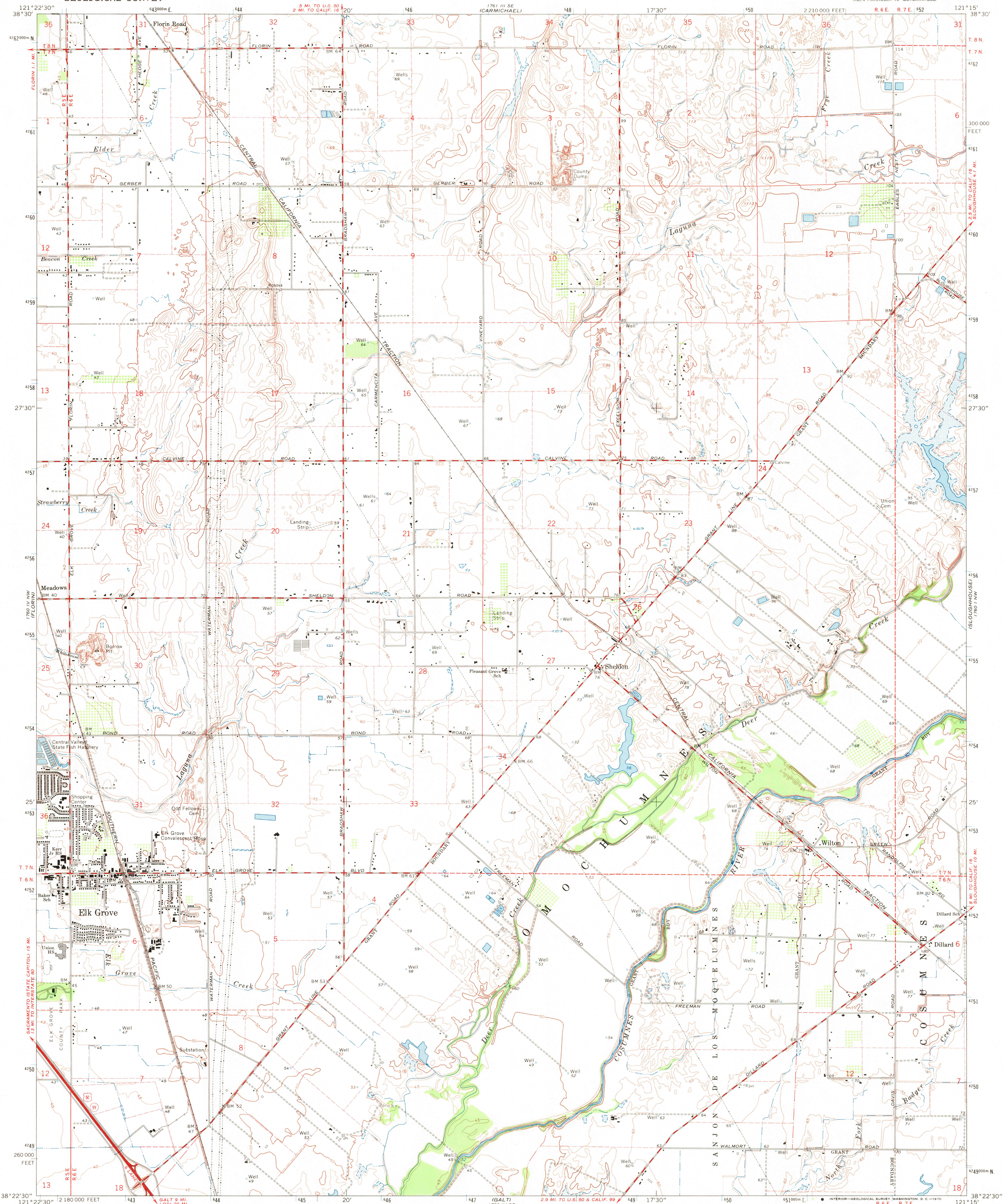


UNITED STATES
DEPARTMENT OF THE INTERIOR
GEOLOGICAL SURVEY

ELK GROVE QUADRANGLE
CALIFORNIA—SACRAMENTO CO.
7.5 MINUTE SERIES (TOPOGRAPHIC)
NE/4 FRANKLIN 15 QUADRANGLE



Mapped, edited, and published by the Geological Survey

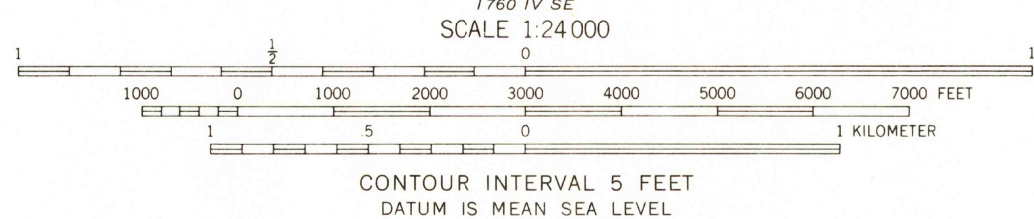
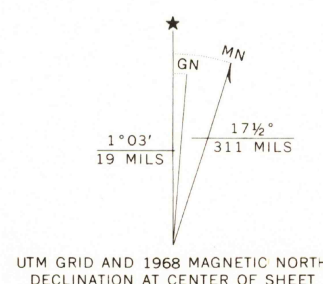
Control by USGS and USC&GS

Topography by photogrammetric methods from aerial
photographs taken 1966. Field checked 1968
Supersedes map surveyed 1907, revised 1952

Polyconic projection. 1927 North American datum
10,000-foot grid based on California coordinate system, zone 2
1000-meter Universal Transverse Mercator grid ticks,
zone 10, shown in blue

Fine red dashed lines indicate selected fence lines

Areas covered by dashed light-blue pattern
are subject to controlled inundation



USGS
Historical File
Topographic Division



HISTORICAL

U.S.G.S.
FILE COPY
TOPOGRAPHIC DIVISION

ROAD CLASSIFICATION

Heavy-duty ——— Light-duty ———
Medium-duty ——— Unimproved dirt ———
U. S. Route ——— State Route ———

ELK GROVE, CALIF.

NE/4 FRANKLIN 15 QUADRANGLE
N3822.5—W12115.7/5

1968

AMS 1760 IV NE—SERIES V895

THIS MAP COMPLIES WITH NATIONAL MAP ACCURACY STANDARDS
FOR SALE BY U. S. GEOLOGICAL SURVEY, DENVER, COLORADO 80225, OR WASHINGTON, D. C. 20242
A FOLDER DESCRIBING TOPOGRAPHIC MAPS AND SYMBOLS IS AVAILABLE ON REQUEST