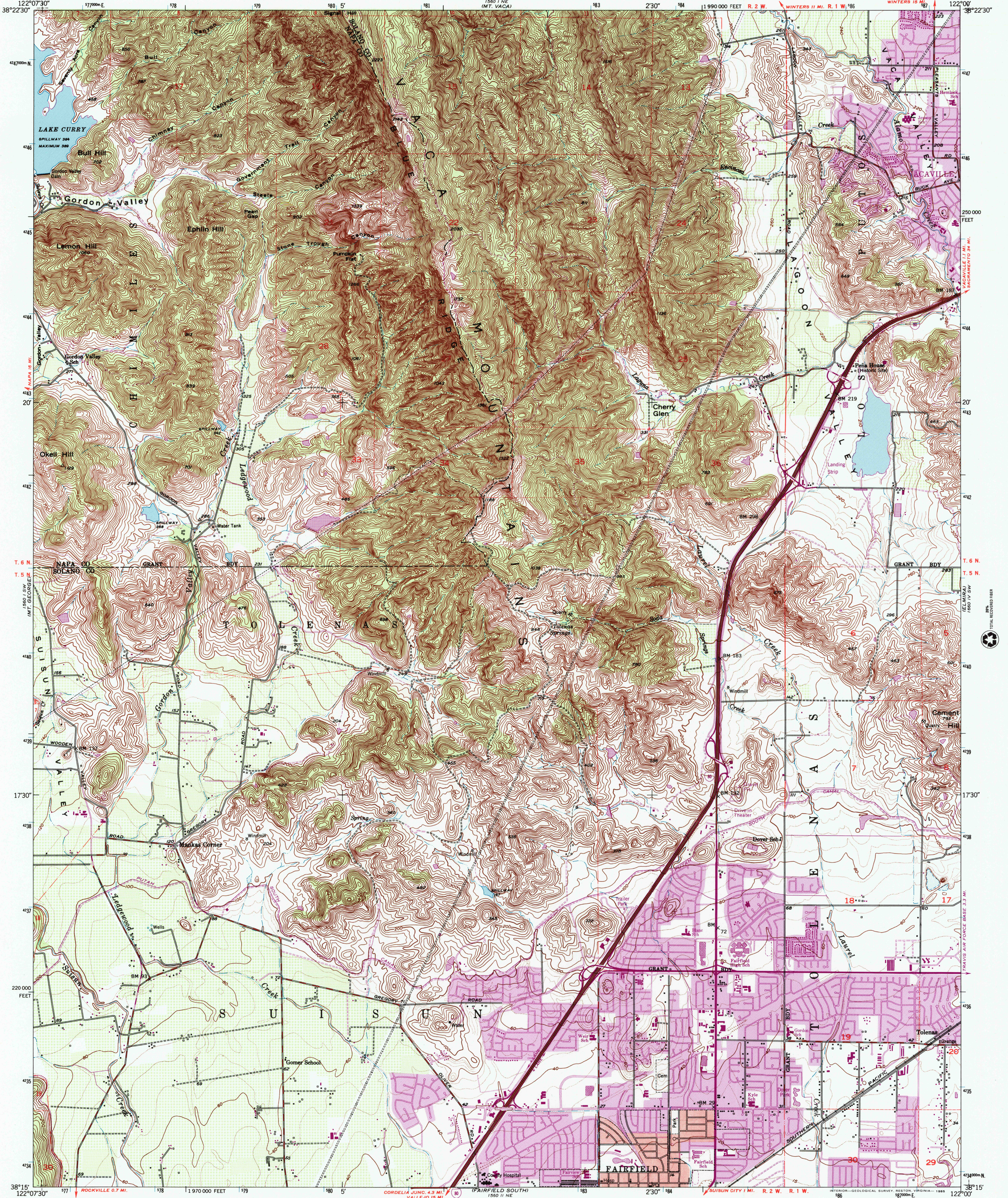




U.S. DEPARTMENT OF THE INTERIOR  
U.S. GEOLOGICAL SURVEY

STATE OF CALIFORNIA  
DEPARTMENT OF WATER RESOURCES

FAIRFIELD NORTH QUADRANGLE  
CALIFORNIA  
7.5 MINUTE SERIES (TOPOGRAPHIC)  
SE/4 MT. VACA 15' QUADRANGLE



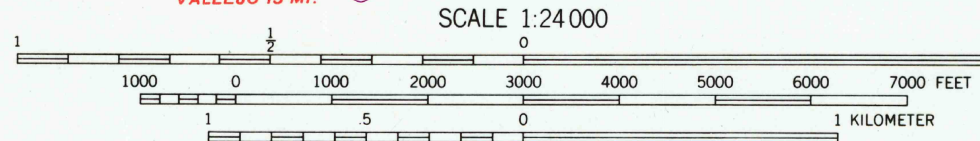
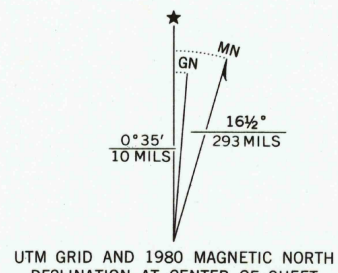
Mapped, edited, and published by the Geological Survey  
Control by USGS, NOS/NOAA, and USCE

Topography by photogrammetric methods from aerial photographs  
taken 1948, and planimetric surveys 1951

Polyconic projection  
10,000-foot grid based on California coordinate system, zone 2  
1000-meter Universal Transverse Mercator grid ticks,  
zone 10 shown in blue. 1927 North American Datum  
To place on the predicted North American Datum 1983  
move the projection lines 15 meters north and  
94 meters east as shown by dashed corner ticks

Red tint indicates area in which only  
landmark buildings are shown  
Dashed land lines indicate approximate location

Revisions shown in purple and woodland compiled from  
aerial photographs taken 1978 and other source data  
This information not field checked. Map edited 1980  
Purple tint indicates extension of urban areas



CONTOUR INTERVAL 20 FEET  
DOTTED LINES REPRESENT 5 FOOT CONTOURS  
NATIONAL GEODETIC VERTICAL DATUM OF 1929

THIS MAP COMPLIES WITH NATIONAL MAP ACCURACY STANDARDS  
FOR SALE BY U.S. GEOLOGICAL SURVEY, P.O. BOX 25286, DENVER, COLORADO 80225  
A FOLDER DESCRIBING TOPOGRAPHIC MAPS AND SYMBOLS IS AVAILABLE ON REQUEST



ROAD CLASSIFICATION  
Heavy-duty ——— Light-duty ———  
Medium-duty ——— Unimproved dirt ———  
Interstate Route

FAIRFIELD NORTH, CALIF.  
SE/4 MT. VACA 15' QUADRANGLE  
38122-C1-TF-024

1951  
PHOTOREVISED 1980  
DMA 1560 I SE-SERIES V895

