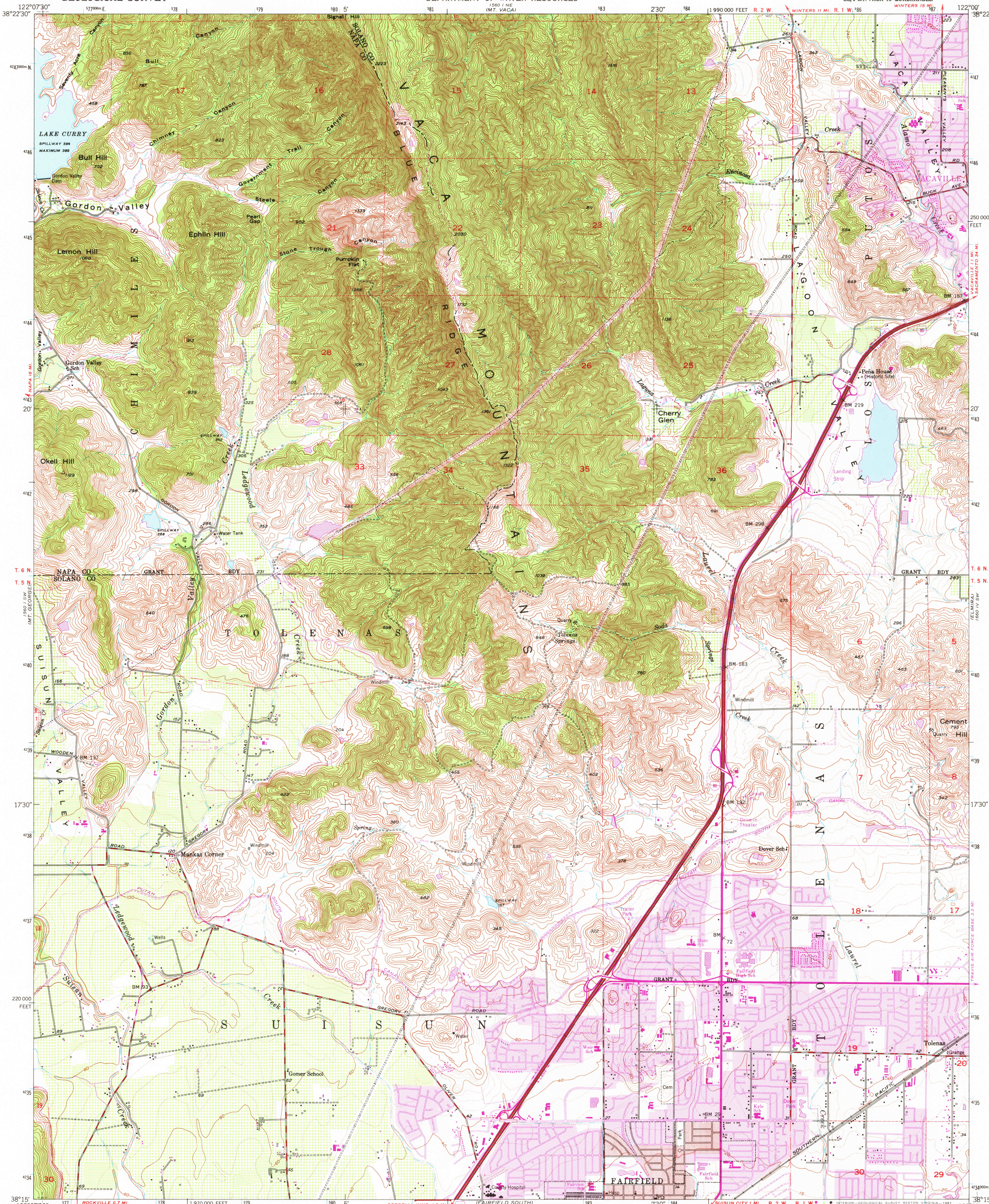


UNITED STATES
DEPARTMENT OF THE INTERIOR
GEOLOGICAL SURVEY

STATE OF CALIFORNIA
DEPARTMENT OF WATER RESOURCES

FAIRFIELD NORTH QUADRANGLE
CALIFORNIA
7.5 MINUTE SERIES (TOPOGRAPHIC)
SE/4 MT. VACA 15' QUADRANGLE



Mapped, edited, and published by the Geological Survey

Control by USGS, NOS/NOAA, and USCE

Topography by photogrammetric methods from aerial photographs taken 1948, and planetable surveys 1951

Polyconic projection

10,000-foot grid based on California coordinate system, zone 2

1000-meter Universal Transverse Mercator grid ticks, zone 10 shown in blue. 1927 North American Datum

To place on the predicted North American Datum 1983 move the projection lines 15 meters north and 94 meters east as shown by dashed corner ticks

Red tint indicates area in which only landmark buildings are shown

Dashed land lines indicate approximate location

Revisions shown in purple and woodland compiled from aerial photographs taken 1978 and other source data

This information not field checked. Map edited 1980

Purple tint indicates extension of urban areas

SCALE 1:24,000

1 0 1000 2000 3000 4000 5000 6000 7000 FEET

1 0 1 2 3 4 5 6 7 8 9 10 KILOMETER

CONTOUR INTERVAL 20 FEET

DOTTED LINES REPRESENT 5 FOOT CONTOURS

NATIONAL GEODETIC VERTICAL DATUM OF 1929

THIS MAP COMPLIES WITH NATIONAL MAP ACCURACY STANDARDS
FOR SALE BY U. S. GEOLOGICAL SURVEY, DENVER, COLORADO 80225, OR RESTON, VIRGINIA 22092
A FOLDER DESCRIBING TOPOGRAPHIC MAPS AND SYMBOLS IS AVAILABLE ON REQUEST

ROAD CLASSIFICATION
Heavy-duty ——— Light-duty ———
Medium-duty ——— Unimproved dirt ———
Interstate Route



FAIRFIELD NORTH, CALIF.
SE/4 MT. VACA 15' QUADRANGLE
N3815-W12200/7.5

1951
PHOTOREVISED 1980
DMA 1560 I SE—SERIES V885

USGS
Historical File
National Mapping Div.

3050