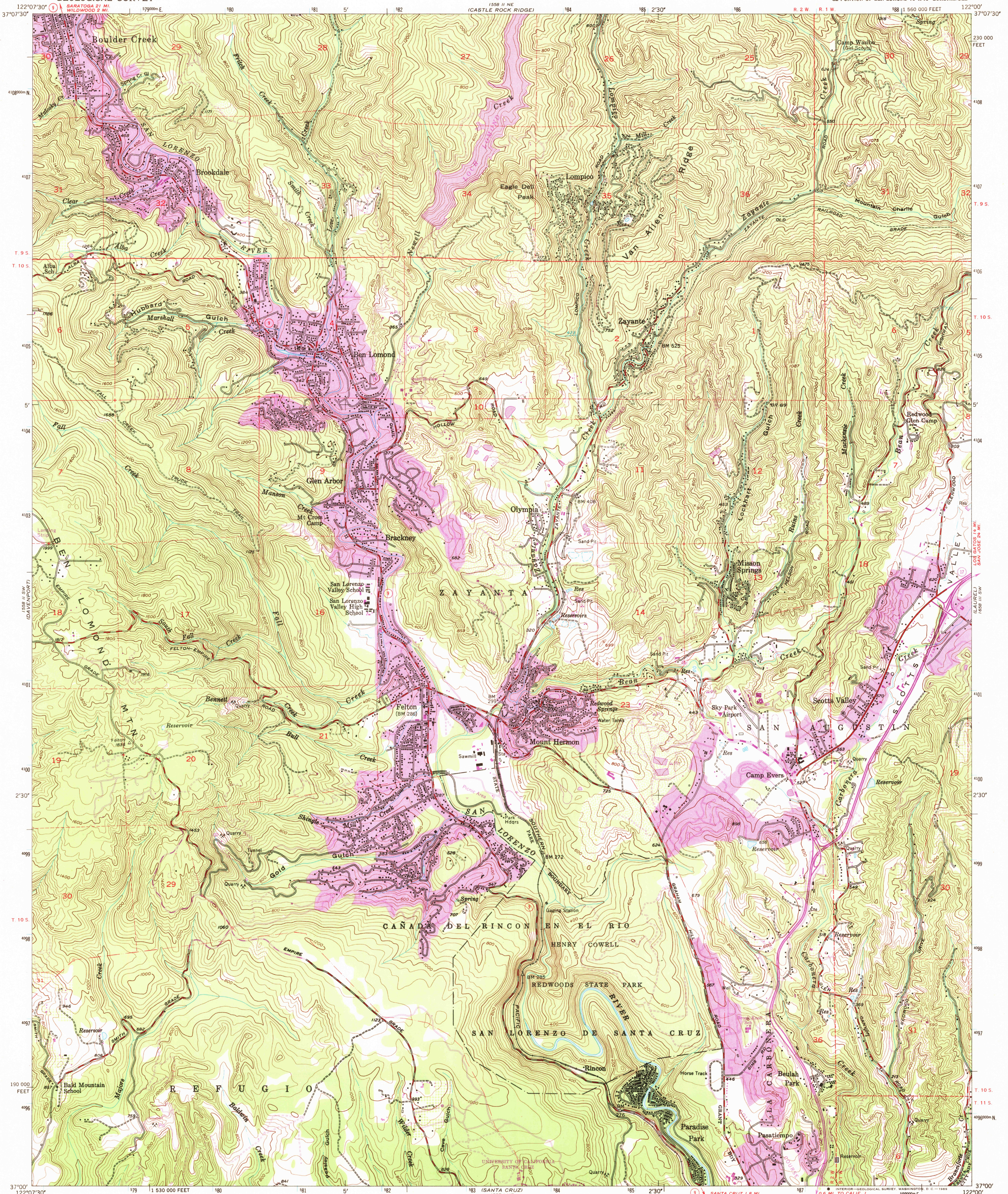
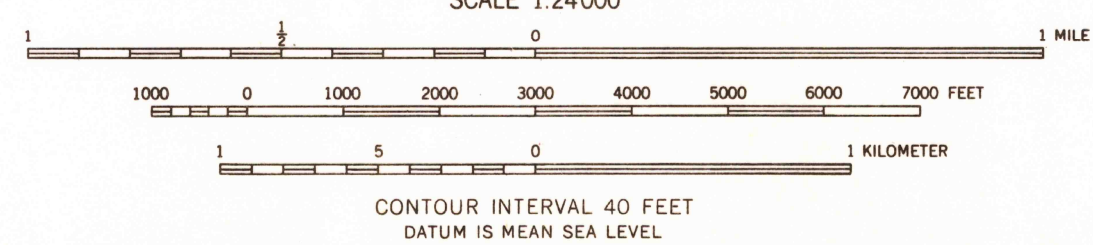
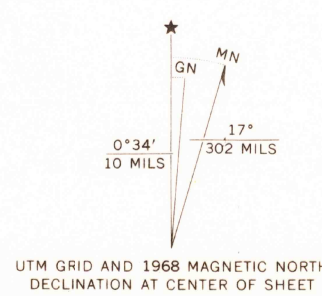


UNITED STATES
DEPARTMENT OF THE INTERIOR
GEOLOGICAL SURVEY

FELTON QUADRANGLE
CALIFORNIA-SANTA CRUZ CO.
7.5 MINUTE SERIES (TOPOGRAPHIC)
SE PORTION OF BEN LOMOND 18' X 15' QUADRANGLE



Mapped, edited, and published by the Geological Survey
Control by USGS, USC&GS, and USCE
Topography from aerial photographs by multiplex methods
Aerial photographs taken 1953. Field check 1955
Polyconic projection. 1927 North American datum
10,000-foot grid based on California coordinate system, zone 3
1000-meter Universal Transverse Mercator grid ticks,
zone 10, shown in blue
Revisions shown in purple compiled from aerial photographs
taken 1968. This information not field checked
Purple tint indicates extension of urban areas



THIS MAP COMPLIES WITH NATIONAL MAP ACCURACY STANDARDS
FOR SALE BY U. S. GEOLOGICAL SURVEY, DENVER, COLORADO 80225, OR WASHINGTON, D. C. 20542
A FOLDER DESCRIBING TOPOGRAPHIC MAPS AND SYMBOLS IS AVAILABLE ON REQUEST

USGS
Historical File
Topographic Division



ROAD CLASSIFICATION
Heavy-duty ——— Light-duty ———
Medium-duty ——— Unimproved dirt ———
State Route

FELTON, CALIF.
SE PORTION OF BEN LOMOND 18' X 15' QUADRANGLE
N3700-W12200/7.5
1955
PHOTOREVISED 1968
AMS 1558 II SE-SERIES V895

1558 II NW
(LOS GATOS)

6965
JUL 22 1968