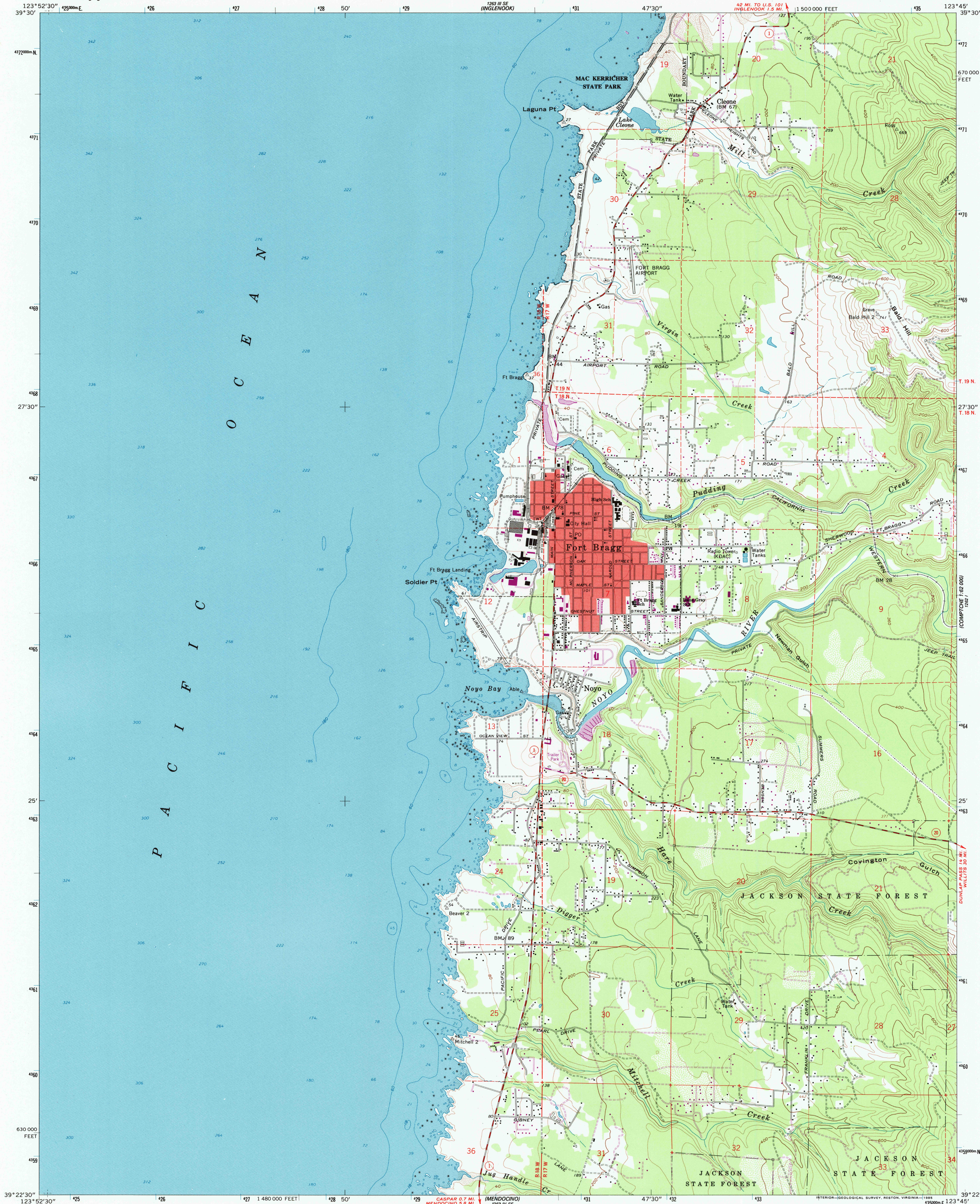




STATE OF CALIFORNIA  
DEPARTMENT OF WATER RESOURCES

FORT BRAGG QUADRANGLE  
CALIFORNIA—MENDOCINO CO.  
7.5 MINUTE SERIES (TOPOGRAPHIC)  
NE/4 FORT BRAGG 15' QUADRANGLE

263 11 SW  
ANS KNOLL



Mapped, edited, and published by the Geological Survey  
Control by USGS, NOS/NOAA, and USCE

Topography from aerial photographs by photogrammetric methods  
Aerial photographs taken 1957. Field check 1960

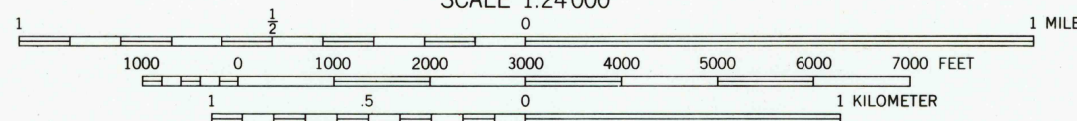
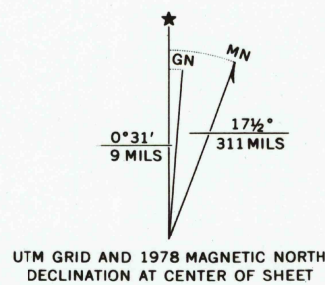
Selected hydrographic data compiled from NOS/NOAA Chart 5703 (1957)  
This information is not intended for navigational purposes

Polyconic projection. 1927 North American datum  
10,000-foot grid based on California coordinate system, zone 2  
1000-meter Universal Transverse Mercator grid ticks,  
zone 10, shown in blue

To place on the predicted North American Datum 1983  
move the projection lines 18 meters north and  
96 meters east as shown by dashed corner ticks

Red tint indicates area in which only landmark buildings are shown

There may be private inholdings within the boundaries of  
the National or State reservations shown on this map.



CONTOUR INTERVAL 40 FEET  
DOTTED LINES REPRESENT 20-FOOT CONTOURS  
NATIONAL GEODETIC VERTICAL DATUM OF 1929  
DEPTH CURVES AND SOUNDINGS IN FEET—DATUM IS MEAN LOWER LOW WATER  
SHORELINE SHOWN REPRESENTS THE APPROXIMATE LINE OF MEAN HIGH WATER  
THE MEAN RANGE OF TIDE IS APPROXIMATELY 4 FEET

THIS MAP COMPLIES WITH NATIONAL MAP ACCURACY STANDARDS  
FOR SALE BY U.S. GEOLOGICAL SURVEY, P.O. BOX 25286, DENVER, COLORADO 80225  
A FOLDER DESCRIBING TOPOGRAPHIC MAPS AND SYMBOLS IS AVAILABLE ON REQUEST



QUADRANGLE LOCATION

ROAD CLASSIFICATION

Medium-duty  Light-duty 

Unimproved dirt =====

 State Route

FORT BRAGG, CALIF  
NE/4 FORT BRAGG 15' QUADRANGLE  
39123-D7-TF-024

1960  
PHOTOREVISED 1978  
DMA 1262 IV NE—SERIES V895

COMPTCHE 1:6  
1262 L

2-2

1-08786

209-01

1581