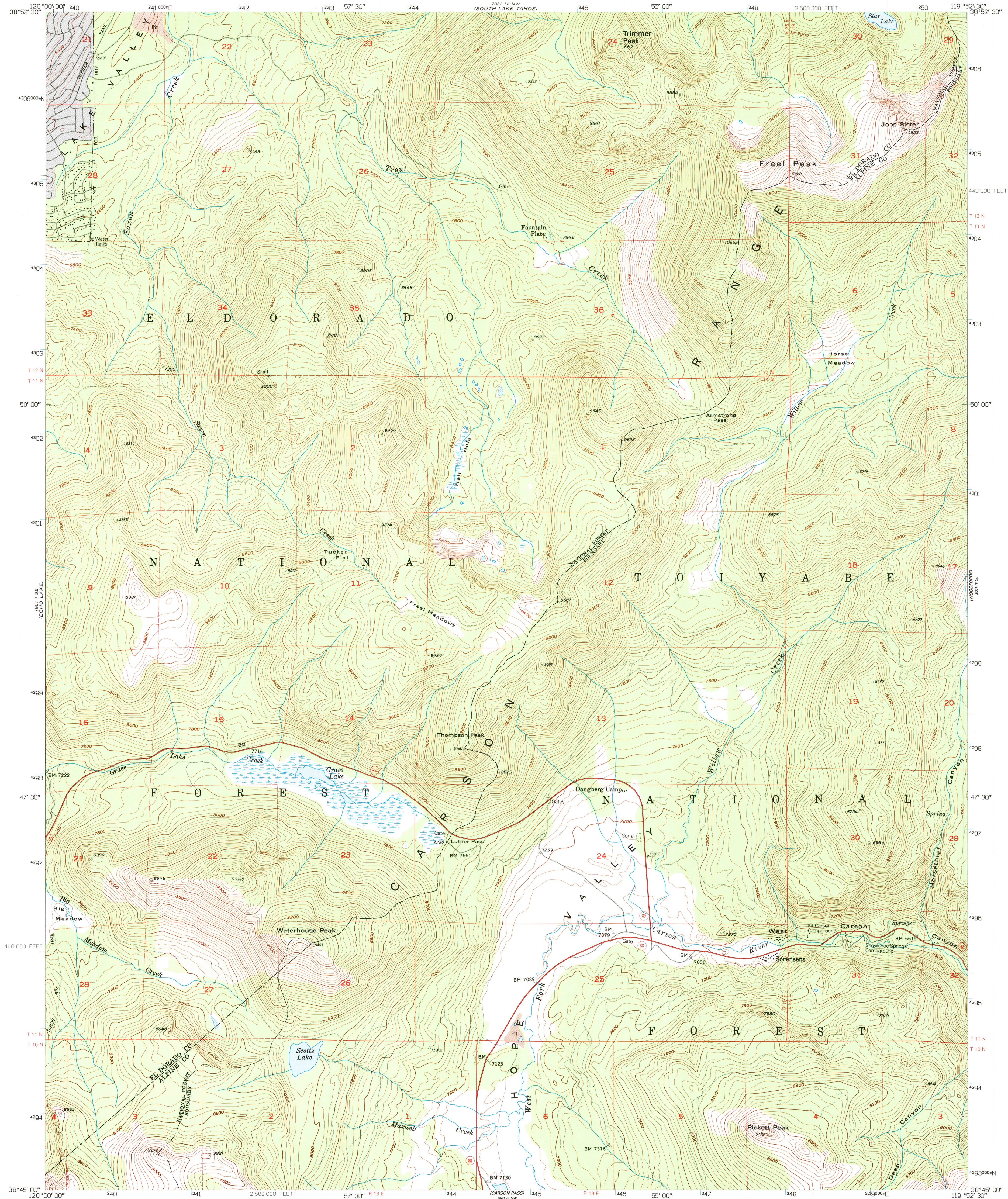
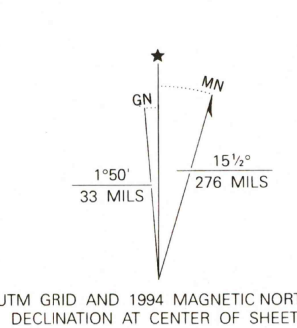


UNITED STATES  
DEPARTMENT OF THE INTERIOR  
GEOLOGICAL SURVEY

FREEL PEAK QUADRANGLE  
CALIFORNIA  
7.5 MINUTE SERIES (TOPOGRAPHIC)



Produced by the United States Geological Survey  
Control by USGS, NOS/NOAA and USBR  
Compiled from imagery dated 1993. Revised from imagery  
dated 1992. PLS current as of 1993. Survey control current  
as of 1995. Map edited 1994. Contours and land elevations  
have not been revised and may conflict with other content  
North American Datum of 1927 (NAD 27). Projection and  
blue 1000-meter Universal Transverse Mercator ticks, zone 11  
10 000-foot ticks: California Coordinate System, zone 2  
North American Datum of 1983 (NAD 83) is shown by dashed  
corner ticks. The values of the shift between NAD 27 and NAD 83  
for 7.5-minute intersections are obtainable from National Geodetic  
Survey NADCON software  
There may be private inholdings within the boundaries of the  
National or State reservations shown on this map  
Gray tint indicates areas in which only landmark buildings are shown

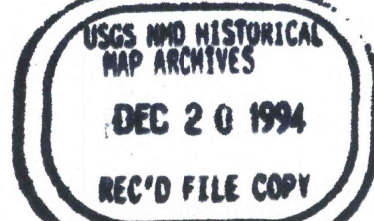


SCALE 1:24 000  
1 000 0 1000 2000 3000 4000 5000 6000 7000 FEET  
1 0 1 2 3 4 5 6 7 8 9 10 KILOMETER  
CONTOUR INTERVAL 40 FEET  
NATIONAL GEODETIC VERTICAL DATUM OF 1929

THIS MAP COMPLIES WITH NATIONAL MAP ACCURACY STANDARDS  
FOR SALE BY U. S. GEOLOGICAL SURVEY, DENVER, COLORADO 80225, OR RESTON, VIRGINIA 22092  
A FOLDER DESCRIBING TOPOGRAPHIC MAPS AND SYMBOLS IS AVAILABLE ON REQUEST



ROAD CLASSIFICATION  
Primary highway, hard surface  
Secondary highway, hard surface  
Unimproved road  
Interstate Route  
U. S. Route  
State Route



FREEL PEAK, CA  
38119-G8-TF-024  
1992  
DMA 2061 IV SW-SERIES V895