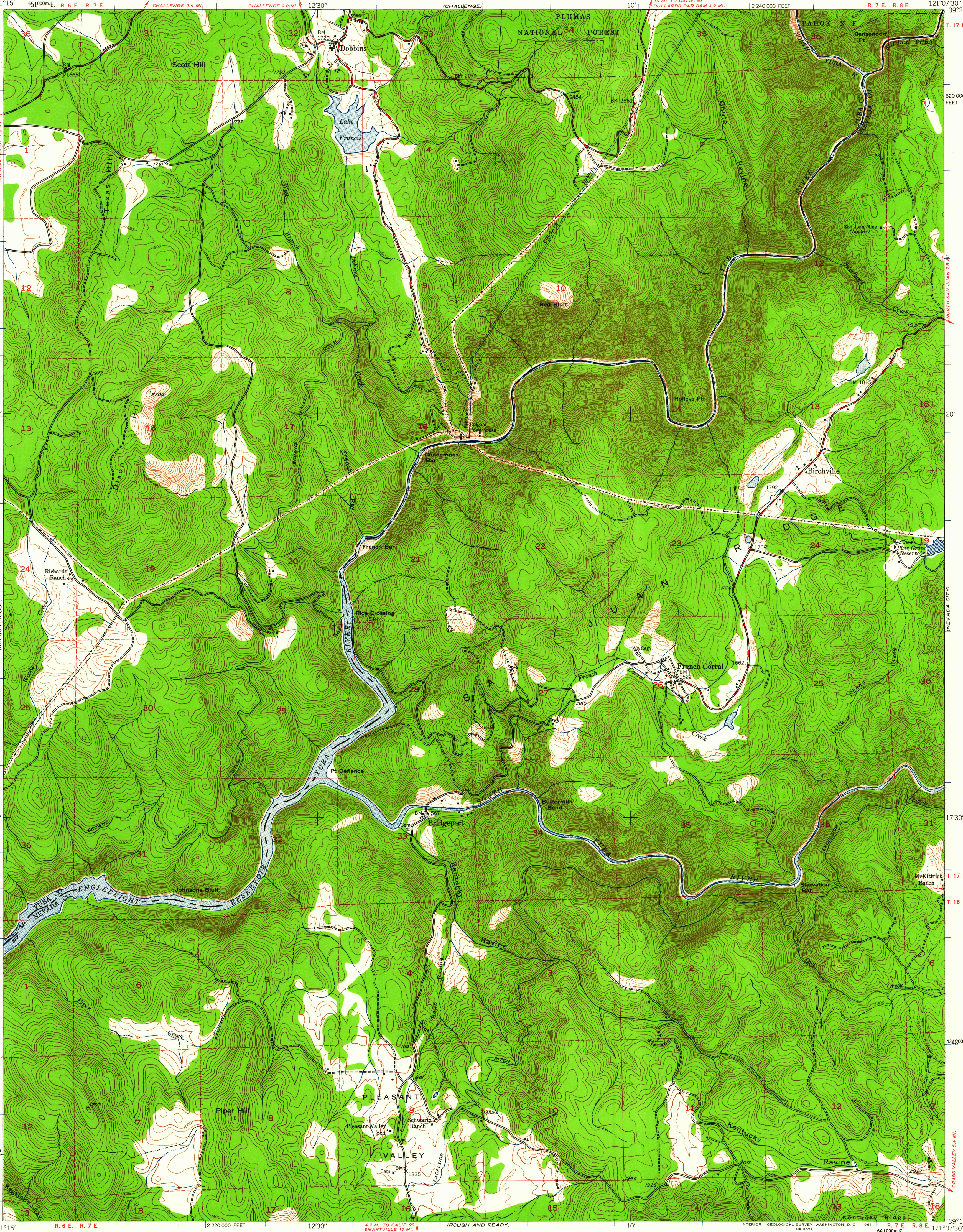


UNITED STATES
DEPARTMENT OF THE INTERIOR
GEOLOGICAL SURVEY

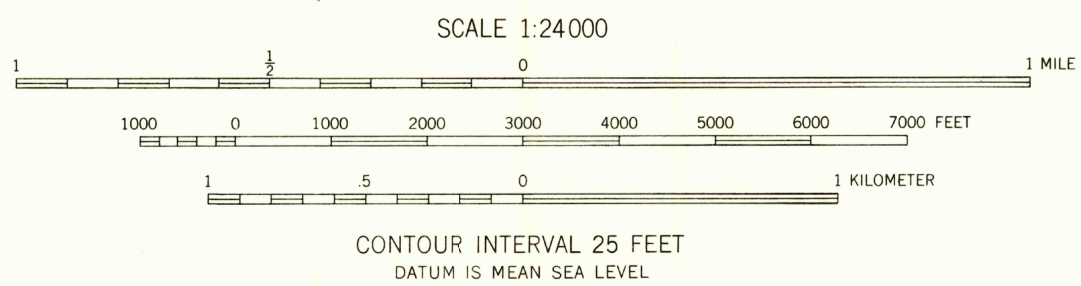
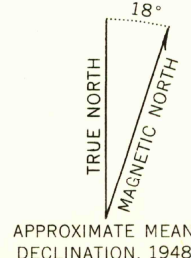
BUREAU OF RECLAMATION

STATE OF CALIFORNIA
REPRESENTED BY THE
DIRECTOR OF PUBLIC WORKS

FRENCH CORRAL QUADRANGLE
CALIFORNIA
7.5 MINUTE SERIES (TOPOGRAPHIC)



Map by Fairchild Aerial Surveys, Inc.
Field inspected, edited, and published by the Geological Survey
Control by Fairchild Aerial Surveys, Inc.,
USGS, and USC&GS
Topography from aerial photographs by stereoplanigraph methods
Aerial photographs taken 1946-1947. Field check 1948
Polyconic projection. 1927 North American datum
10,000-foot grid based on California coordinate system,
zone 2
1000-meter Universal Transverse Mercator grid ticks,
zone 10, shown in blue
Dashed land lines indicate approximate location
Fairchild triangulation shown by unlabeled located object symbol



USGS
Historical File
Topographic Division

ROAD CLASSIFICATION
Medium-duty ——— Light-duty ———
Unimproved dirt ———

FRENCH CORRAL, CALIF.
N3915-W12107.5/7.5
1948
USGS
FILE
TOPOGRAPHIC DIVISION

FOR SALE BY U. S. GEOLOGICAL SURVEY, DENVER 25, COLORADO OR WASHINGTON 25, D. C.
A FOLDER DESCRIBING TOPOGRAPHIC MAPS AND SYMBOLS IS AVAILABLE ON REQUEST

JUL - 6 1961

2515