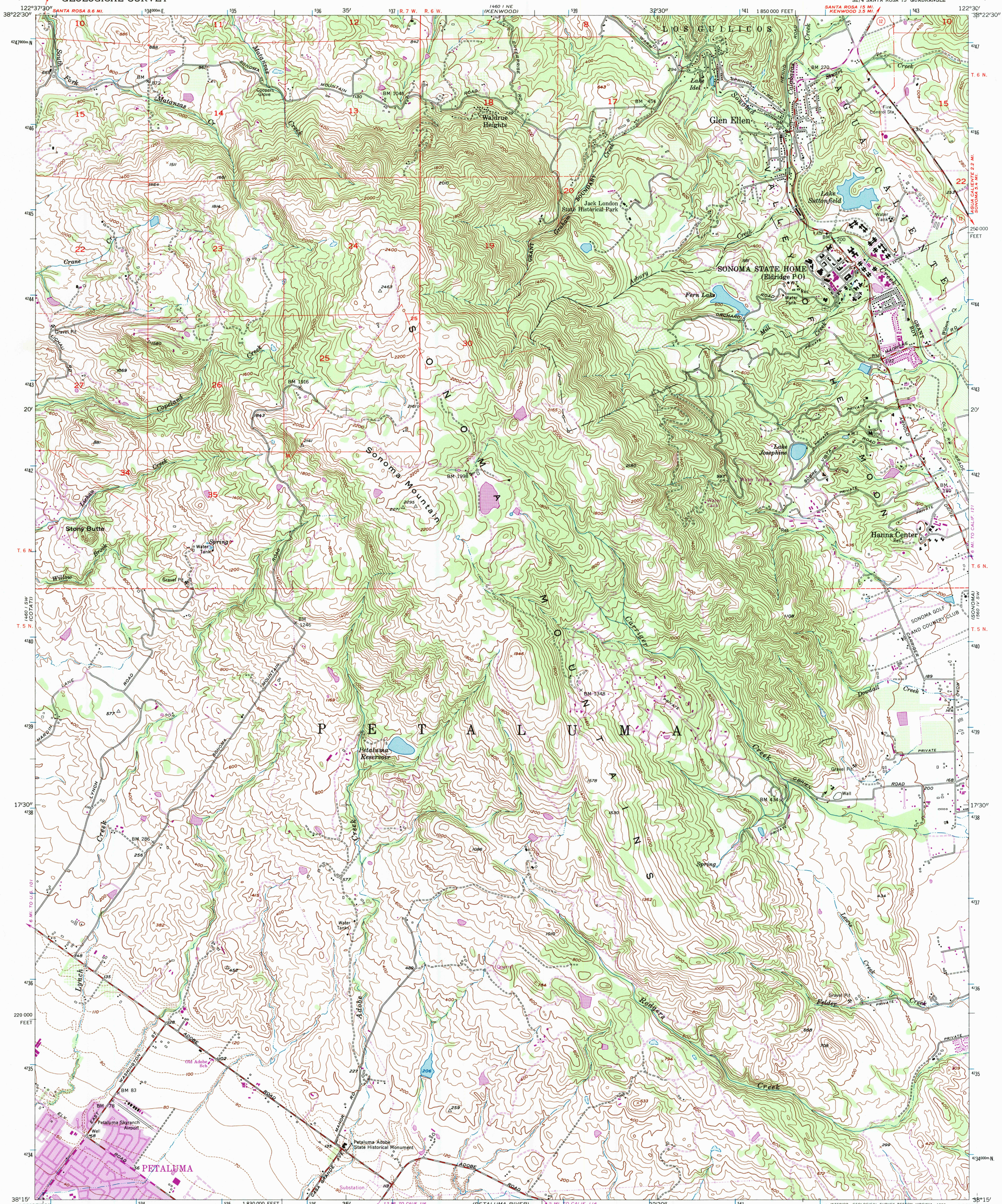


UNITED STATES
DEPARTMENT OF THE INTERIOR
GEOLOGICAL SURVEY

GLEN ELLEN QUADRANGLE
CALIFORNIA—SONOMA CO.
7.5 MINUTE SERIES (TOPOGRAPHIC)
SE/4 SANTA ROSA 15' QUADRANGLE



Mapped, edited, and published by the Geological Survey
Control by USGS and USC&GS

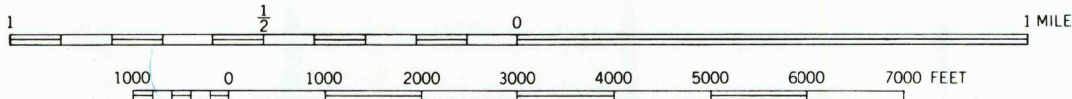
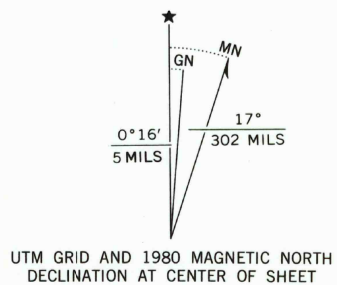
Topography from aerial photographs by photogrammetric methods
and by plane-table surveys 1954. Aerial photographs taken 1952

Polynomial projection
10,000-foot grid based on California coordinate system, zone 2
1000-meter Universal Transverse Mercator grid ticks,
zone 10, shown in blue. 1927 North American Datum
To place on the predicted North American Datum 1983
move the projection lines 16 meters north and
95 meters east as shown by dashed corner ticks

Dashed land lines indicate approximate locations

Unchecked elevations are shown in brown
There may be private inholdings within the boundaries of
the National or State reservations shown on this map

Revisions shown in purple and woodland compiled from
aerial photographs taken 1978 and other source data
This information not field checked. Map edited 1980



CONTOUR INTERVAL 40 FEET
DASHED LINES REPRESENT 10 FOOT CONTOURS
NATIONAL GEODETIC VERTICAL DATUM OF 1929

THIS MAP COMPLIES WITH NATIONAL MAP ACCURACY STANDARDS
FOR SALE BY U.S. GEOLOGICAL SURVEY, DENVER, COLORADO 80225, OR RESTON, VIRGINIA 22092
A FOLDER DESCRIBING TOPOGRAPHIC MAPS AND SYMBOLS IS AVAILABLE ON REQUEST



QUADRANGLE LOCATION
Purple tint indicates urban area

ROAD CLASSIFICATION
Medium-duty ——— Light-duty ———
Unimproved dirt - - - - -
State Route

GLEN ELLEN, CALIF.
SE/4 SANTA ROSA 15' QUADRANGLE
N3815—W12230/7.5

1954
PHOTOREVISED 1980
DMA 1460 I SE—SERIES V895

