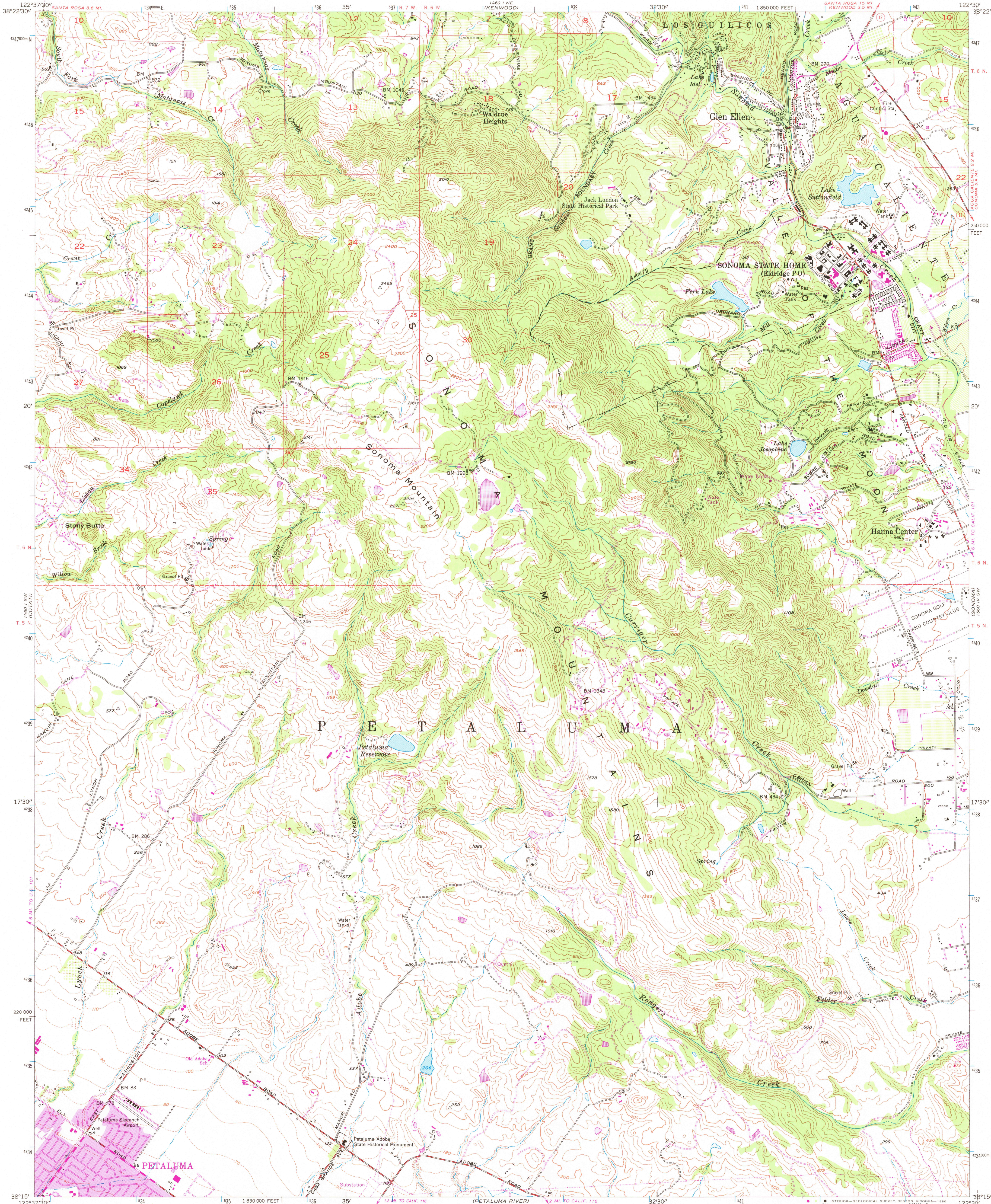


UNITED STATES
DEPARTMENT OF THE INTERIOR
GEOLOGICAL SURVEY

GLEN ELLEN QUADRANGLE
CALIFORNIA—SONOMA CO.
7.5 MINUTE SERIES (TOPOGRAPHIC)
SE/4 SANTA ROSA 15' QUADRANGLE



Mapped, edited, and published by the Geological Survey

Control by USGS and USGS&S

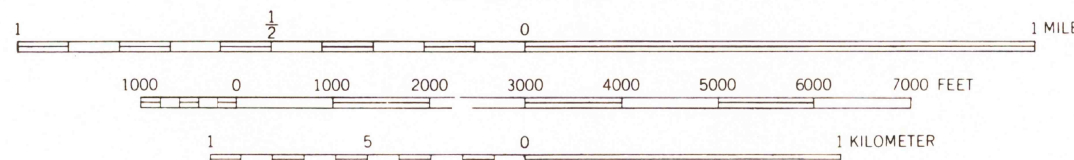
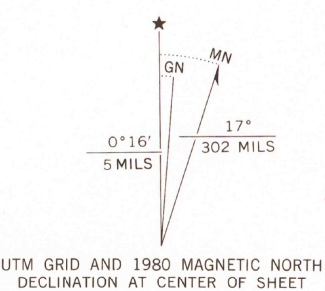
Topography from aerial photographs by photogrammetric methods and by plane-table surveys 1954. Aerial photographs taken 1952

Polyconic projection
10,000-foot grid based on California coordinate system, zone 2
1000-meter Universal Transverse Mercator grid ticks
zone 10, shown in blue. 1927 North American Datum
To place on the predicted North American Datum 1983
move the projection lines 16 meters north and
95 meters east as shown by dashed corner ticks

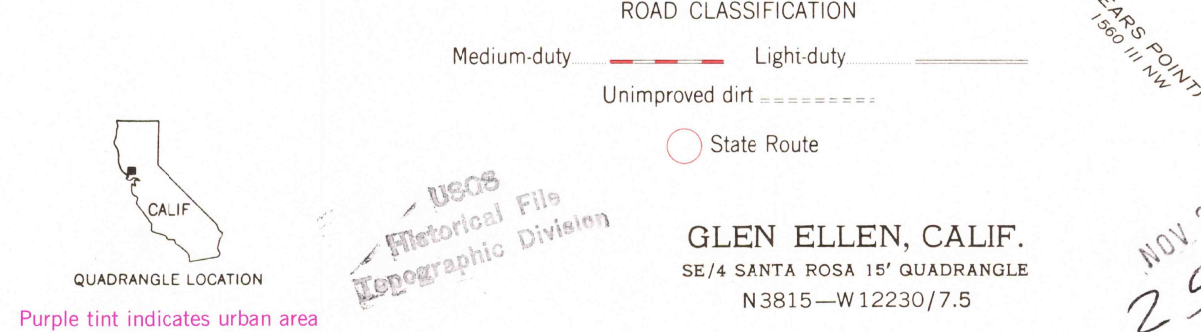
Dashed land lines indicate approximate locations
Unchecked elevations are shown in brown

There may be private inholdings within the boundaries of
the National or State reservations shown on this map

Revisions shown in purple and woodland compiled from
aerial photographs taken 1978 and other source data
This information not field checked. Map edited 1980



THIS MAP COMPLIES WITH NATIONAL MAP ACCURACY STANDARDS
FOR SALE BY U. S. GEOLOGICAL SURVEY, DENVER, COLORADO 80225, OR RESTON, VIRGINIA 22092
A FOLDER DESCRIBING TOPOGRAPHIC MAPS AND SYMBOLS IS AVAILABLE ON REQUEST



GLEN ELLEN, CALIF.
SE/4 SANTA ROSA 15' QUADRANGLE
N 3815'—W 12230' / 7.5

1954
PHOTOREVISED 1980
DMA 1460 I SE—SERIES V895

NOV 28 1980
2500