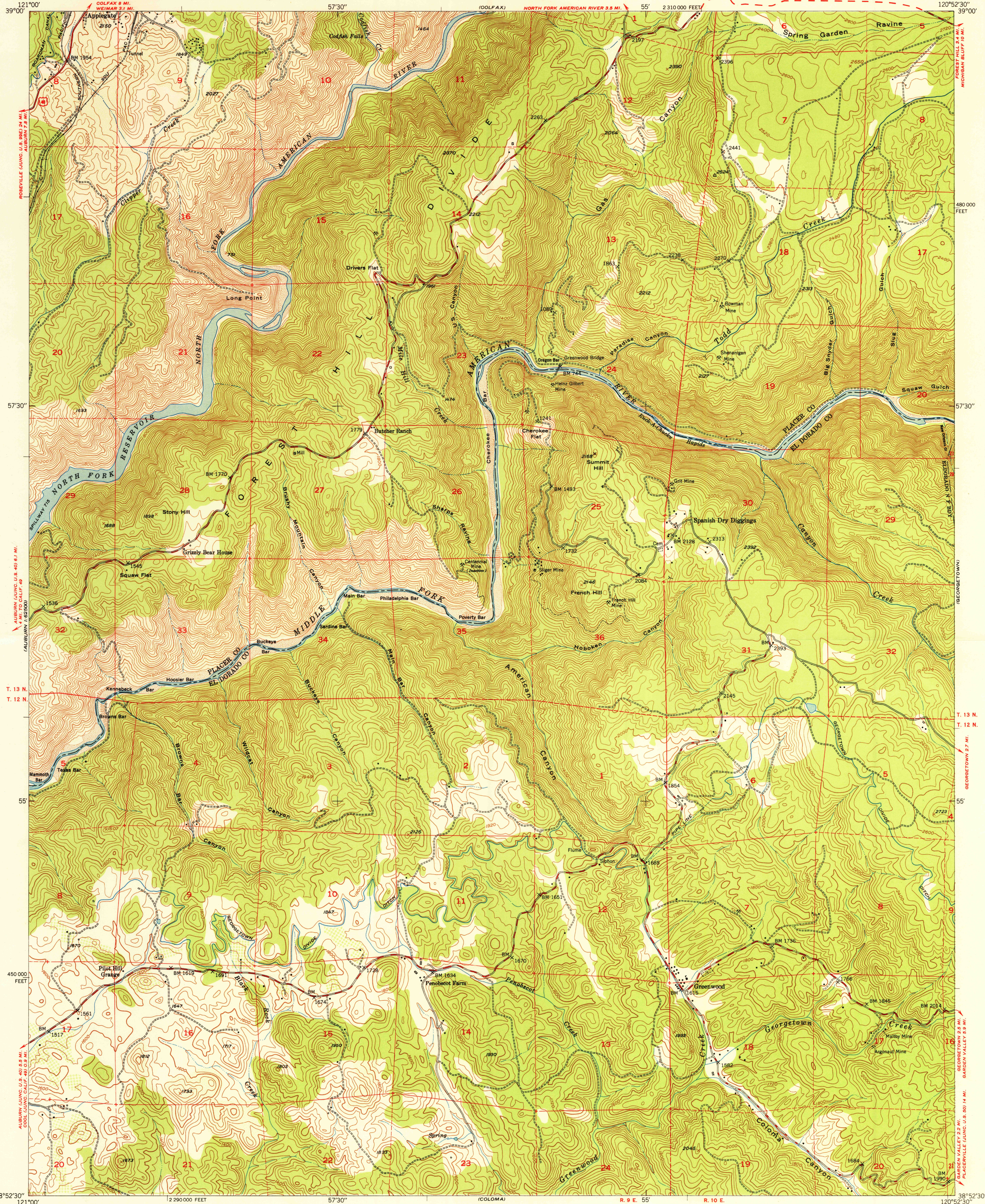


UNITED STATES
DEPARTMENT OF THE INTERIOR
GEOLOGICAL SURVEY

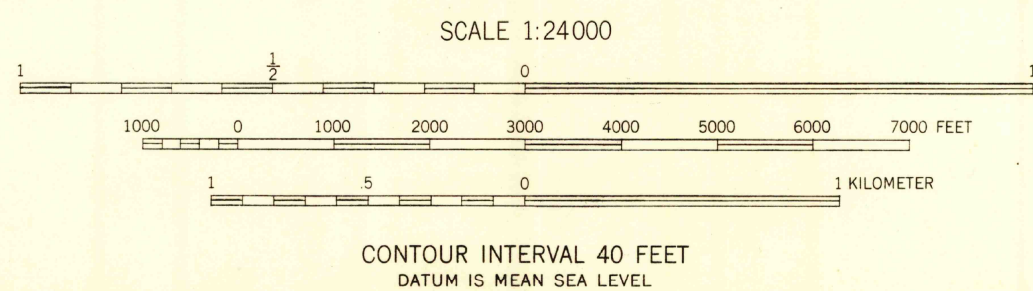
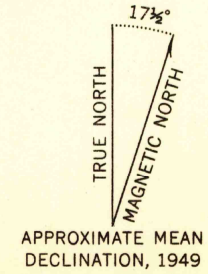
U.S.G.S.
FILE COPY
Inspection and Editing

STATE OF CALIFORNIA
EARL WARREN, GOVERNOR
C. H. PURCELL, DIRECTOR OF PUBLIC WORKS
A. D. EDMONSTON, STATE ENGINEER

GREENWOOD QUADRANGLE
CALIFORNIA
7.5 MINUTE SERIES (TOPOGRAPHIC)



Mapped, edited, and published by the Geological Survey
Control by USGS, USC&GS, and USFS
Topography from aerial photographs by multiplex methods
Aerial photographs taken 1946. Field check 1949
Polyconic projection. 1927 North American datum
10,000-foot grid based on California coordinate system,
zone 2
Dashed land lines indicate approximate location
Unchecked elevations are shown in brown



CONTOUR INTERVAL 40 FEET
DATUM IS MEAN SEA LEVEL

THIS MAP COMPLIES WITH NATIONAL MAP ACCURACY STANDARDS
FOR SALE BY U. S. GEOLOGICAL SURVEY, FEDERAL CENTER, DENVER, COLORADO OR WASHINGTON 25, D. C.
A FOLDER DESCRIBING TOPOGRAPHIC MAPS AND SYMBOLS IS AVAILABLE ON REQUEST

USGS
Historical File
Topographic Division
U.S.G.S.
FILE COPY
Inspection and Editing

ROAD CLASSIFICATION
HARD-SURFACE ALL WEATHER ROADS DRY WEATHER ROADS
Heavy-duty 4 LANE 16 LANE Improved dirt
Medium-duty 4 LANE 16 LANE Unimproved dirt
Loose-surface, graded, or narrow hard-surface
U. S. Route State Route

GREENWOOD, CALIF.
N3852.5-W12052.5/7.5
EDITION OF 1950