

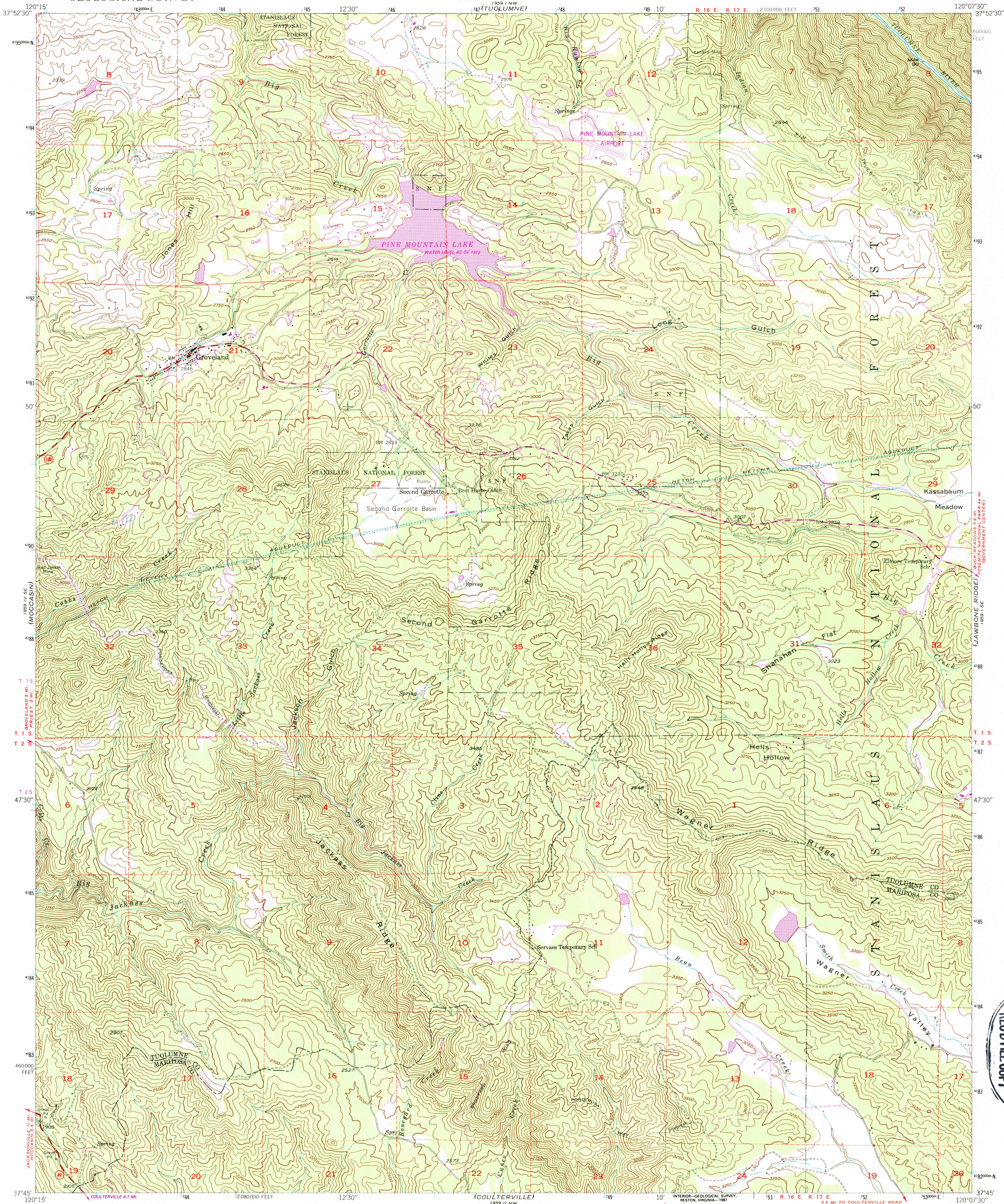
1989 IV NE
STANDARD

UNITED STATES
DEPARTMENT OF THE INTERIOR
GEOLOGICAL SURVEY

UNITED STATES
DEPARTMENT OF THE ARMY
CORPS OF ENGINEERS
1959 I NW
(TUOLUMNE)

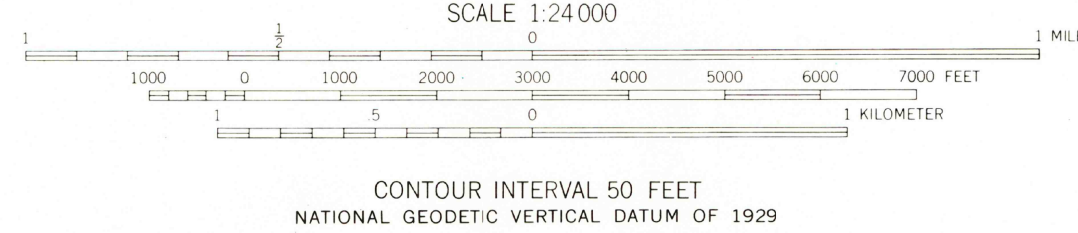
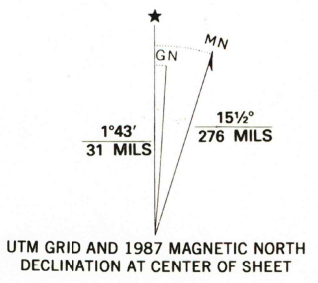
GROVELAND QUADRANGLE
CALIFORNIA
7.5 MINUTE SERIES (TOPOGRAPHIC)

1989 I NE
(BUCKWALL MTN)



1989 IV NE
PENON BLANC PEAK

Mapped, edited, and published by the Geological Survey
Control by USGS and USC&GS
Topography from aerial photographs by multiplex methods
Aerial photographs taken 1945 Field check, 1947
Polyconic projection. 1927 North American Datum
10,000-foot grid based on California coordinate system, zone 3
1000-meter Universal Transverse Mercator grid ticks,
zone 10, shown in blue
To place on the predicted North American Datum 1983,
move the projection lines 12 meters north and
89 meters east as shown by dashed corner ticks
There may be private inholdings within the boundaries of
the National or State reservations shown on this map
Dashed land lines indicate approximate locations



THIS MAP COMPLIES WITH NATIONAL MAP ACCURACY STANDARDS
FOR SALE BY U. S. GEOLOGICAL SURVEY, DENVER, COLORADO 80225, OR RESTON, VIRGINIA 22092
A FOLDER DESCRIBING TOPOGRAPHIC MAPS AND SYMBOLS IS AVAILABLE ON REQUEST



ROAD CLASSIFICATION
Medium-duty ——— Light-duty ———
Unimproved dirt ———
State Route ———

GROVELAND, CALIF.
37120-02-TF-024

1947
PHOTOREVISED 1987
DMA 1959 I SW-SERIES V895

SEP 20 1987
REC'D FILE COPY

1989 I NE
(BUCKWALL MTN)