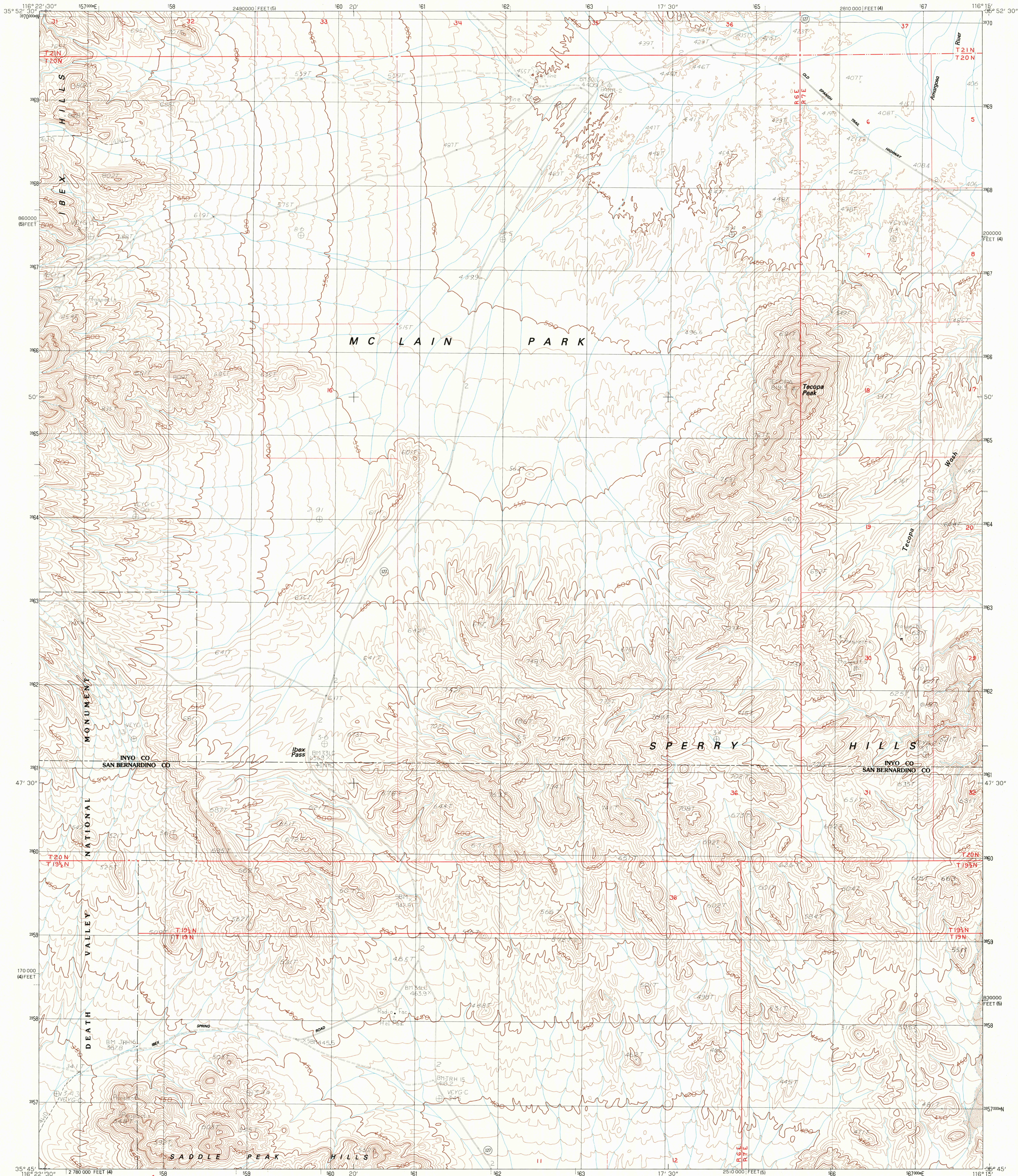


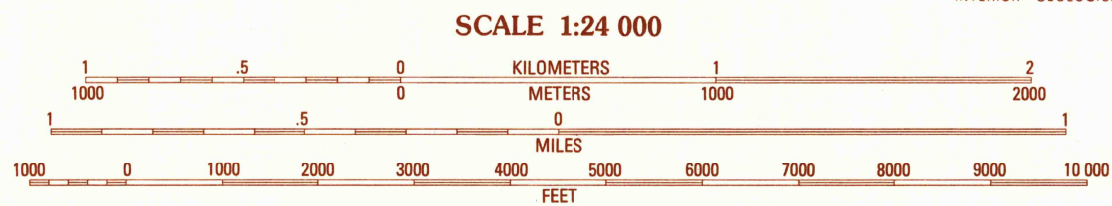
UNITED STATES  
DEPARTMENT OF THE INTERIOR  
GEOLOGICAL SURVEY

IBEX PASS QUADRANGLE  
CALIFORNIA  
7.5 MINUTE SERIES (TOPOGRAPHIC)



PRODUCED BY THE UNITED STATES GEOLOGICAL SURVEY  
CONTROL BY ..... USGS, NOS/NOAA  
COMPILED FROM AERIAL PHOTOGRAPHS TAKEN ..... 1976 AND 1980  
FIELD CHECKED ..... 1981 MAP EDITED ..... 1984  
PROJECTION ..... UNIVERSAL TRANSVERSAL MERCATOR  
GRID: 1000-METER UNIVERSAL TRANSVERSE MERCATOR ..... ZONE 11  
10,000-FOOT STATE GRID TICKS ..... CALIF. ZONES 4 AND 5  
UTM GRID DECLINATION ..... 14°30' EAST  
1980 MAGNETIC NORTH DECLINATION ..... 14°30' EAST  
VERTICAL DATUM ..... NATIONAL GEODETIC VERTICAL DATUM OF 1929  
HORIZONTAL DATUM ..... 1927 NORTH AMERICAN DATUM  
To place on the predicted North American Datum of 1983,  
move the projection lines as shown by dashed corner ticks  
( 5 meters north / 78 meters east )  
There may be private inholdings within the boundaries of any  
Federal and State Reservations shown on this map  
Where omitted, land lines have not been established

PROVISIONAL MAP  
Produced from original  
manuscript drawings. Infor-  
mation shown as of date of  
field check.



THIS MAP COMPLIES WITH NATIONAL MAP ACCURACY STANDARDS  
FOR SALE BY U. S. GEOLOGICAL SURVEY, DENVER, COLORADO 80225, OR RESTON, VIRGINIA 22092

1	2	3	1
4	5	6	2
7	8	9	3

QUADRANGLE LOCATION

ADJOINING 7.5' QUADRANGLE NAMES

CONTOURS AND ELEVATIONS IN METERS  
ROAD LEGEND

Improved Road .....  
Unimproved Road .....  
Trail .....  
Interstate Route ..... U.S. Route ..... State Route .....

IBEX PASS, CALIF.  
PROVISIONAL EDITION 1984

35116-G3-TM-024