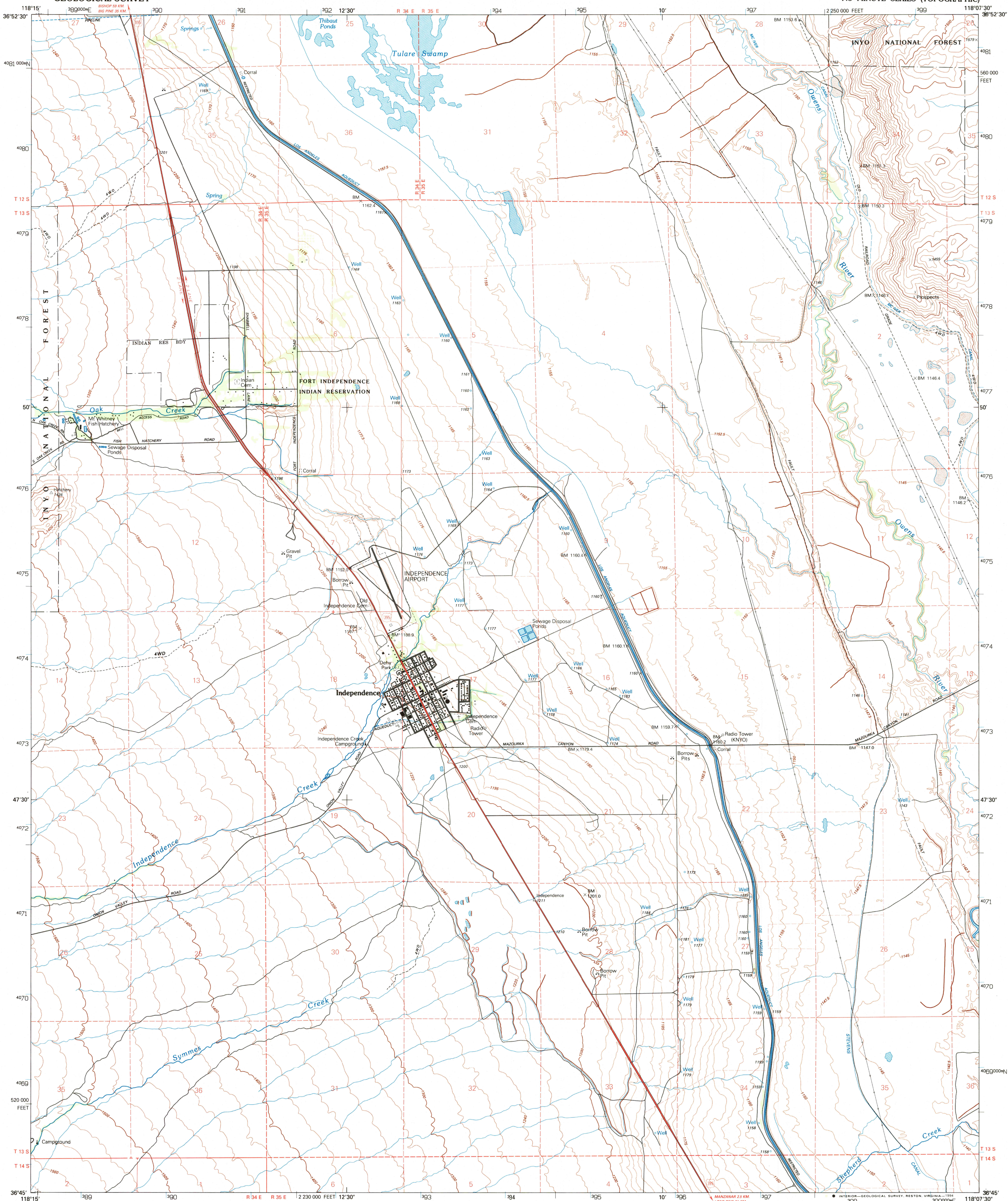


UNITED STATES
DEPARTMENT OF THE INTERIOR
GEOLOGICAL SURVEY

INDEPENDENCE QUADRANGLE
CALIFORNIA-INOYO CO.
7.5 MINUTE SERIES (TOPOGRAPHIC)



Produced by the United States Geological Survey in cooperation with California Department of Water Resources

Control by USGS and NOS/NOAA

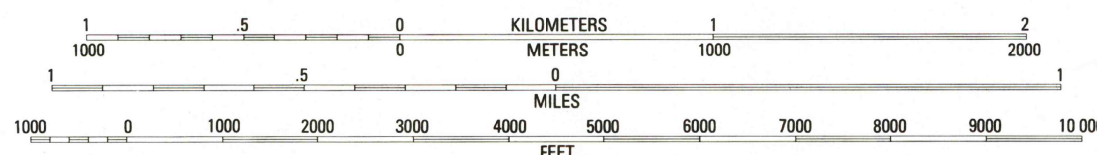
Compiled from imagery taken 1978. Photosinspected using imagery dated 1992; no major culture or drainage changes observed. PLSS and survey control current as of 1979. Boundaries verified and names revised 1994

North American Datum of 1927 (NAD 27). Projection and 1000-foot ticks: California Coordinate System, zone 4 (Lambert Conformal Conic)

Blue 1000-meter Universal Transverse Mercator ticks, zone 11 North American Datum of 1983 (NAD 83) is shown by dashed corner ticks. The values of the shift between NAD 27 and NAD 83 for 7.5-minute intersections are obtainable from National Geodetic Survey NADCON software

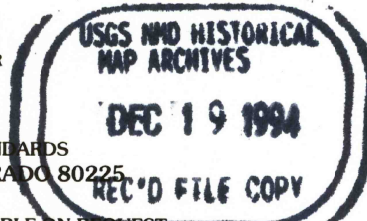
There may be private inholdings within the boundaries of the National or State reservations shown on this map. Fine red dashed lines indicate selected fence lines

SCALE 1:24 000



CONTOUR INTERVAL 20 METERS
SUPPLEMENTARY CONTOUR INTERVAL 2.5 METERS
NATIONAL GEODETIC VERTICAL DATUM OF 1929
CONTROL ELEVATIONS SHOWN TO THE NEAREST 0.1 METER
OTHER ELEVATIONS SHOWN TO THE NEAREST METER
TO CONVERT METERS TO FEET MULTIPLY BY 3.2808
TO CONVERT FEET TO METERS MULTIPLY BY 0.3048

THIS MAP COMPLIES WITH NATIONAL MAP ACCURACY STANDARDS
FOR SALE BY U.S. GEOLOGICAL SURVEY, DENVER, COLORADO 80225
OR RESTON, VIRGINIA 22092
A FOLDER DESCRIBING TOPOGRAPHIC MAPS AND SYMBOLS IS AVAILABLE ON REQUEST



ROAD CLASSIFICATION

Primary highway, hard surface Light-duty road, hard or improved surface

Secondary highway, hard surface Unimproved road

Interstate Route U.S. Route State Route

QUADRANGLE LOCATION

1	2	3
4	5	6
7	8	9

ADJOINING 7.5 QUADRANGLE NAMES

CONTOURS AND ELEVATIONS IN METERS

1 Aberdeen
2 Blackrock
3 Mazurka Peak
4 Kearsarge Peak
5 Bee Springs Canyon
6 Mt. Williamson
7 Manzanar
8 Union Wash

INDEPENDENCE, CA
36118-G2-TM-024
1992
DMA 2357 1 SW-SERIES V895