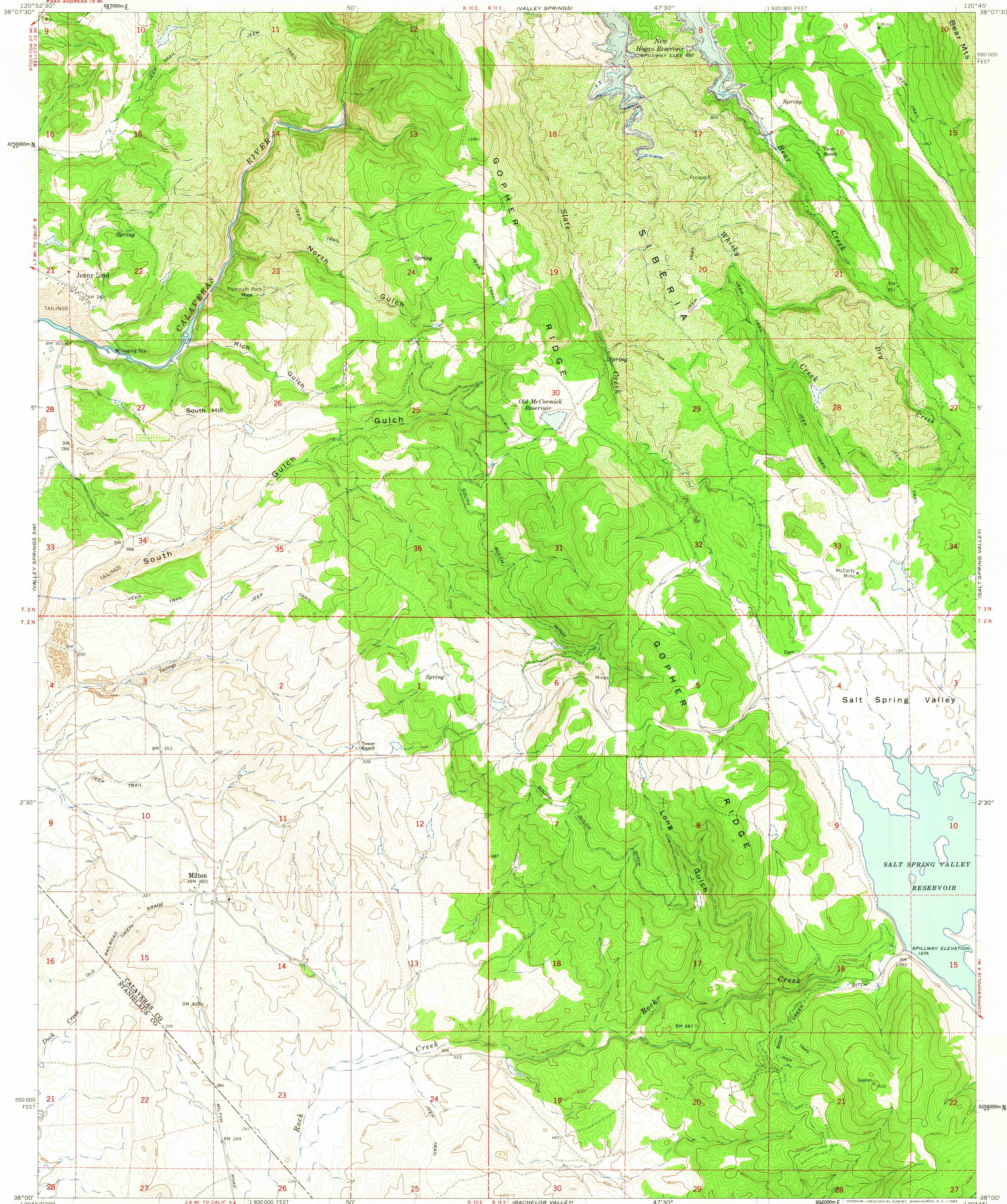


UNITED STATES
DEPARTMENT OF THE INTERIOR
GEOLOGICAL SURVEY

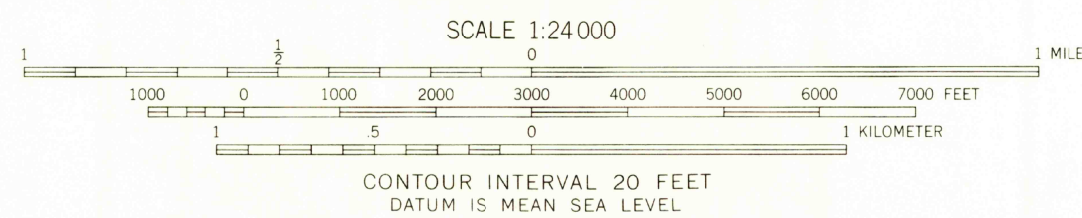
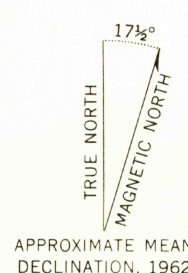
JENNY LIND QUADRANGLE
CALIFORNIA
7.5 MINUTE SERIES (TOPOGRAPHIC)
SE/4 VALLEY SPRINGS 15' QUADRANGLE



Mapped, edited, and published by the Geological Survey
in cooperation with California Department of Water Resources
Control by USGS and USC&GS

Topography by photogrammetric methods from aerial
photographs taken 1959. Field checked 1962
Polyconic projection. 1927 North American datum
10,000-foot grid based on California coordinate system, zone 3
1000-meter Universal Transverse Mercator grid ticks,
zone 10, shown in blue

Fine red dashed lines indicate selected fence lines
Areas covered by dashed light-blue pattern are subject to
controlled inundation
Blue hatching indicates areas to be submerged by
New Hogan Reservoir at elevation 680



THIS MAP COMPLIES WITH NATIONAL MAP ACCURACY STANDARDS
FOR SALE BY U.S. GEOLOGICAL SURVEY, DENVER 25, COLORADO OR WASHINGTON 25, D. C.
A FOLDER DESCRIBING TOPOGRAPHIC MAPS AND SYMBOLS IS AVAILABLE ON REQUEST

USGS
Historical File
Topographic Division



ROAD CLASSIFICATION
Light-duty ————— Unimproved dirt =====
○ State Route

USGS
FILE COPY
TOPOGRAPHIC DIVISION

JENNY LIND, CALIF.
SE/4 VALLEY SPRINGS 15' QUADRANGLE
N3800—W12045/7.5
1962

2645