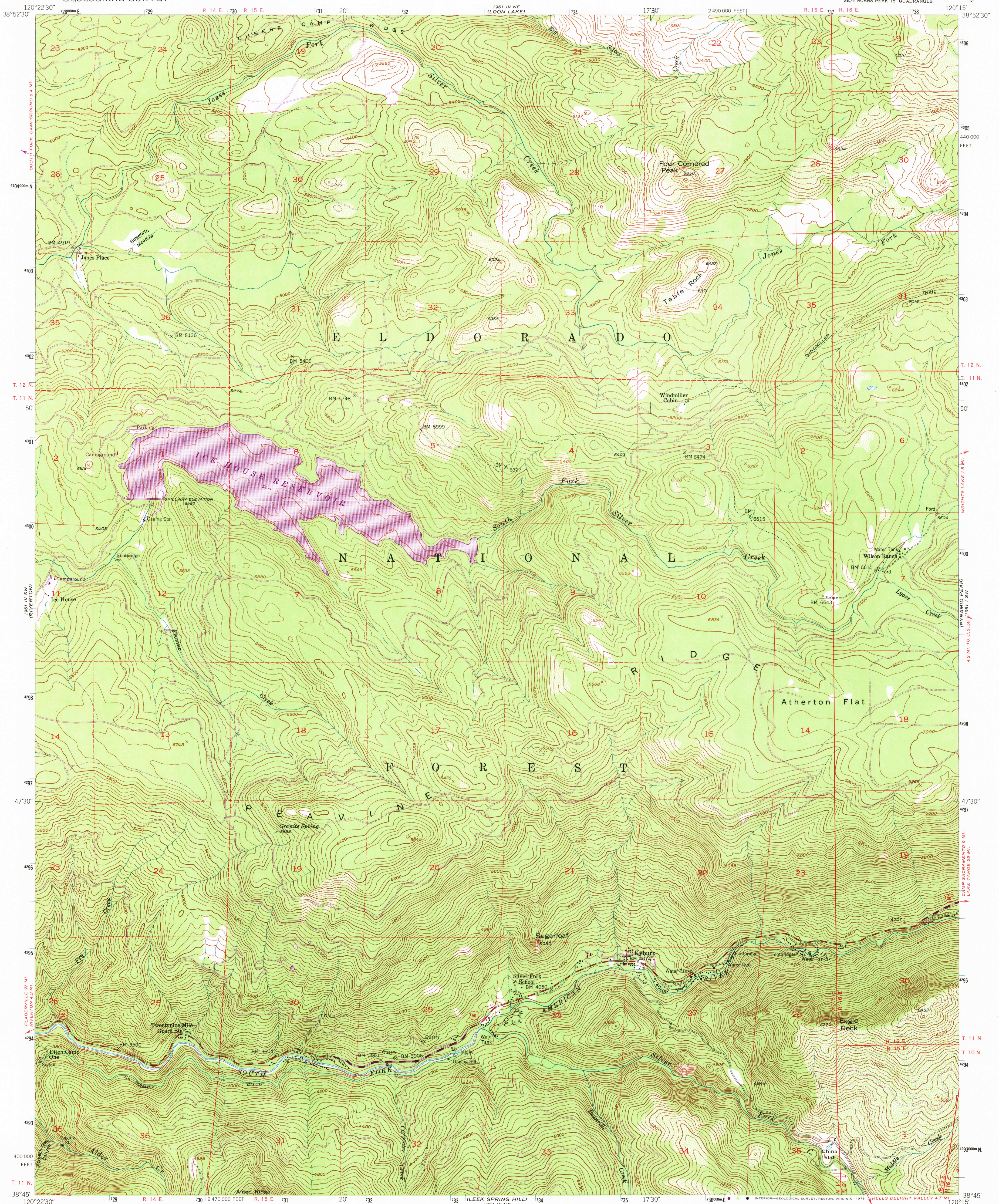


UNITED STATES
DEPARTMENT OF THE INTERIOR
GEOLOGICAL SURVEY

KYBURZ QUADRANGLE
CALIFORNIA—EL DORADO CO.
7.5 MINUTE SERIES (TOPOGRAPHIC)
SE/4 ROBBS PEAK 15' QUADRANGLE



Mapped, edited, and published by the Geological Survey

Control by USC&GS

Topography from aerial photographs by multiplex methods

Aerial photographs taken 1948. Field check 1952

Polyconic projection. 1927 North American datum

10,000-foot grid based on California coordinate system, zone 2

Dashed land lines indicate approximate locations

Unchecked elevations are shown in brown

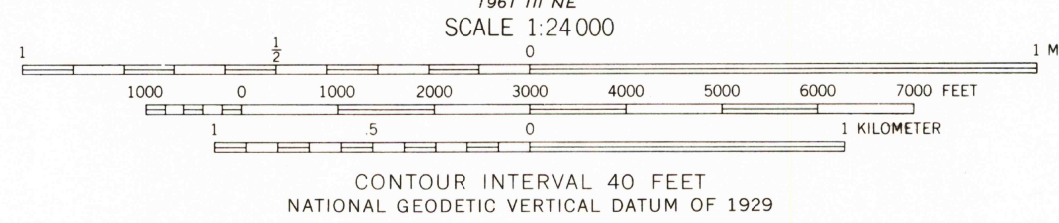
1000-meter Universal Transverse Mercator grid ticks,

zone 10, shown in blue

Revisions shown in purple compiled from aerial photographs

taken 1973. This information not field checked

UTM GRID AND 1973 MAGNETIC NORTH
DECLINATION AT CENTER OF SHEET



ROAD CLASSIFICATION

Medium-duty ——— Light-duty ———

Unimproved dirt ———

U.S. Route



QUADRANGLE LOCATION

USGS
HISTORICAL FILE
TOPOGRAPHIC DIVISION

KYBURZ, CALIF.
SE/4 ROBBS PEAK 15' QUADRANGLE
N3845—W12015/7.5

1952
PHOTOREVISED 1973
AMS 1961 IV SE—SERIES V895