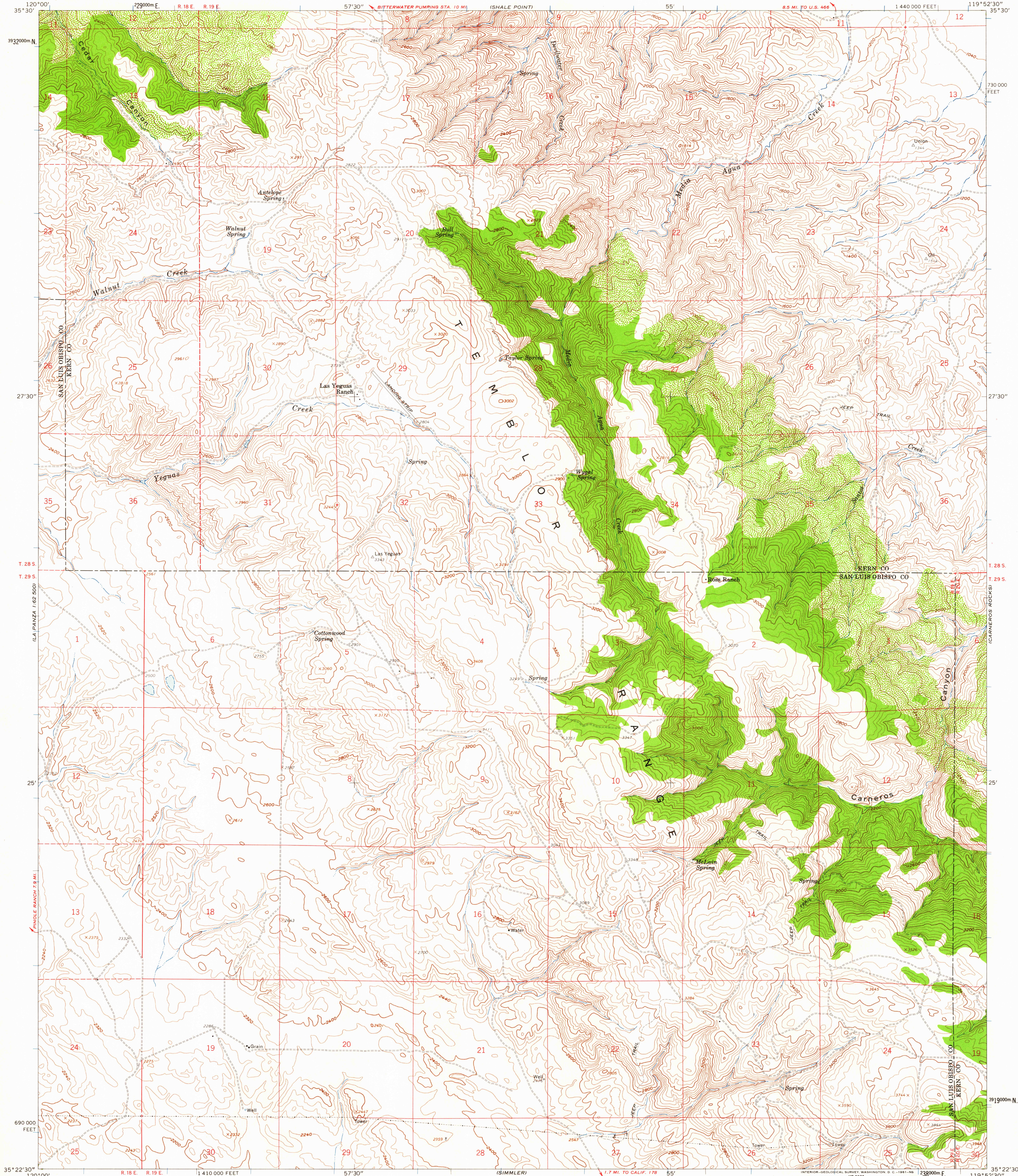


UNITED STATES
DEPARTMENT OF THE INTERIOR
GEOLOGICAL SURVEY

LAS YEGUAS RANCH QUADRANGLE
CALIFORNIA
7.5 MINUTE SERIES (TOPOGRAPHIC)
NW 1/4 SIMMLER 15' QUADRANGLE



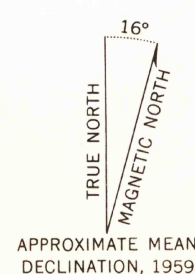
Mapped, edited, and published by the Geological Survey

Control by USGS, USC&GS, and USCE

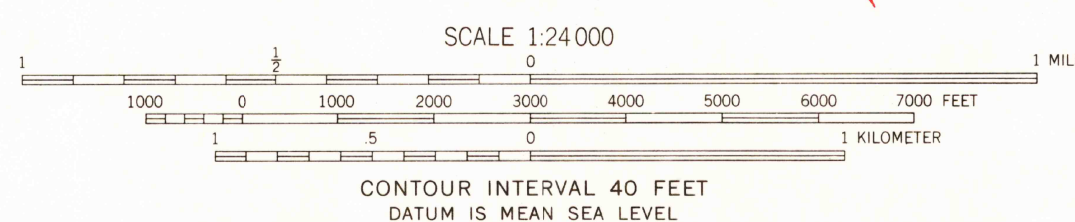
Topography from aerial photographs by photogrammetric methods and by planimetric surveys 1959. Aerial photographs taken 1953

Polyconic projection. 1927 North American datum
10,000-foot grid based on California coordinate system, zone 5
1000-meter Universal Transverse Mercator grid ticks,
zone 11, shown in blue

Dashed land lines indicate approximate locations



APPROXIMATE MEAN
DECLINATION, 1959



THIS MAP COMPLIES WITH NATIONAL MAP ACCURACY STANDARDS
FOR SALE BY U.S. GEOLOGICAL SURVEY, DENVER 25, COLORADO OR WASHINGTON 25, D. C.
A FOLDER DESCRIBING TOPOGRAPHIC MAPS AND SYMBOLS IS AVAILABLE ON REQUEST

USGS
Historical File
Topographic Division



QUADRANGLE LOCATION

U.S.G.S.
FILE COPY
TOPOGRAPHIC DIVISION

ROAD CLASSIFICATION
Unimproved dirt -----

LAS YEGUAS RANCH, CALIF.
NW 1/4 SIMMLER 15' QUADRANGLE
N3522.5-W11952.5/7.5

1959

AUG - 2 1961

2995