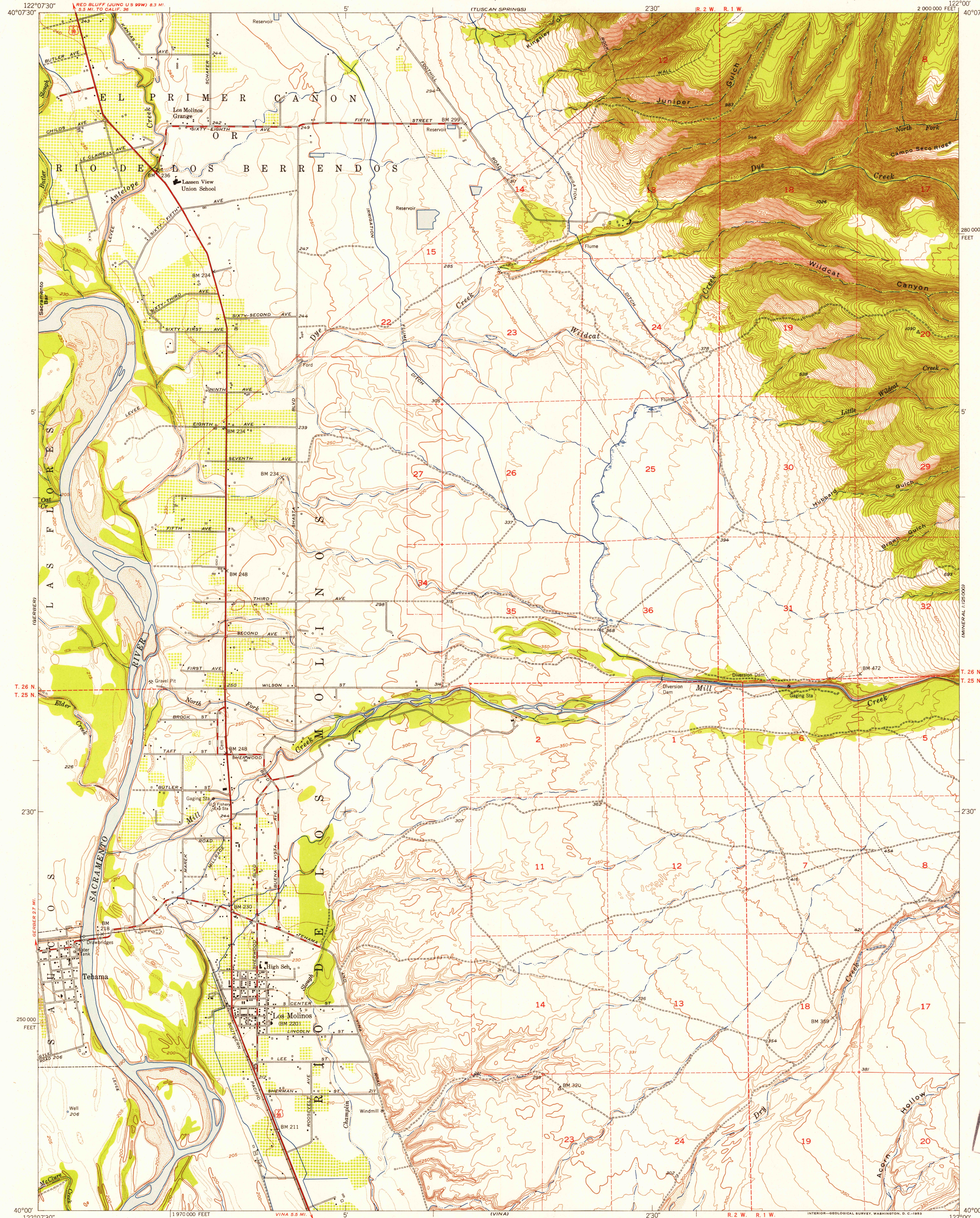


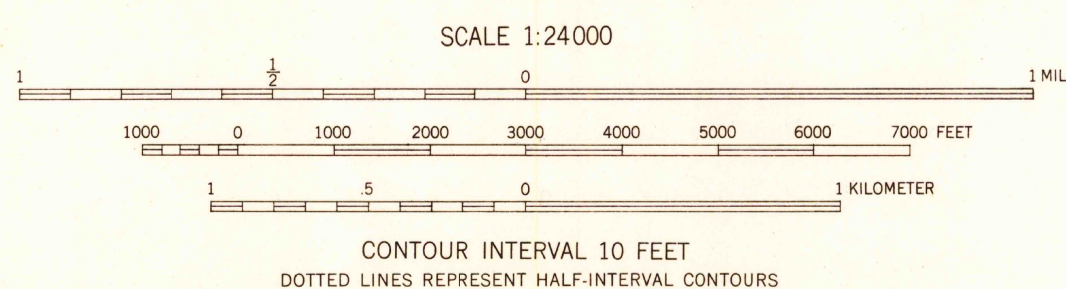
U.S.G.S.
FILE COPY
Inspection and Editing

U.S.G.S.
FILE COPY
Inspection and Editing



Mapped, edited, and published by the Geological Survey
Control by USGS and USC&GS
Topography from aerial photographs by Kelsh plotter
and by plane-table surveys 1952. Aerial photographs taken 1947
Polyconic projection. 1927 North American datum
10,000-foot grid based on California coordinate system, zone 1
Dashed land lines indicate approximate locations
Land grant boundaries which follow the bank of the
Sacramento River are not shown
Unchecked elevations are shown in brown

APPROXIMATE MEAN
DECLINATION, 1952



ROAD CLASSIFICATION
Heavy-duty 4 LANE 6 LANE Light-duty
Medium-duty 4 LANE 6 LANE Unimproved dirt
U. S. Route State Route



USGS
Historical File
Topographic Division

LOS MOLINOS, CALIF.
SE/4 TEHAMA 15' QUADRANGLE
N4000-W12200/7.5

DEC 1 1953

1952

THIS MAP COMPLIES WITH NATIONAL MAP ACCURACY STANDARDS
FOR SALE BY U. S. GEOLOGICAL SURVEY, FEDERAL CENTER, DENVER, COLORADO OR WASHINGTON 25, D. C.
A FOLDER DESCRIBING TOPOGRAPHIC MAPS AND SYMBOLS IS AVAILABLE ON REQUEST