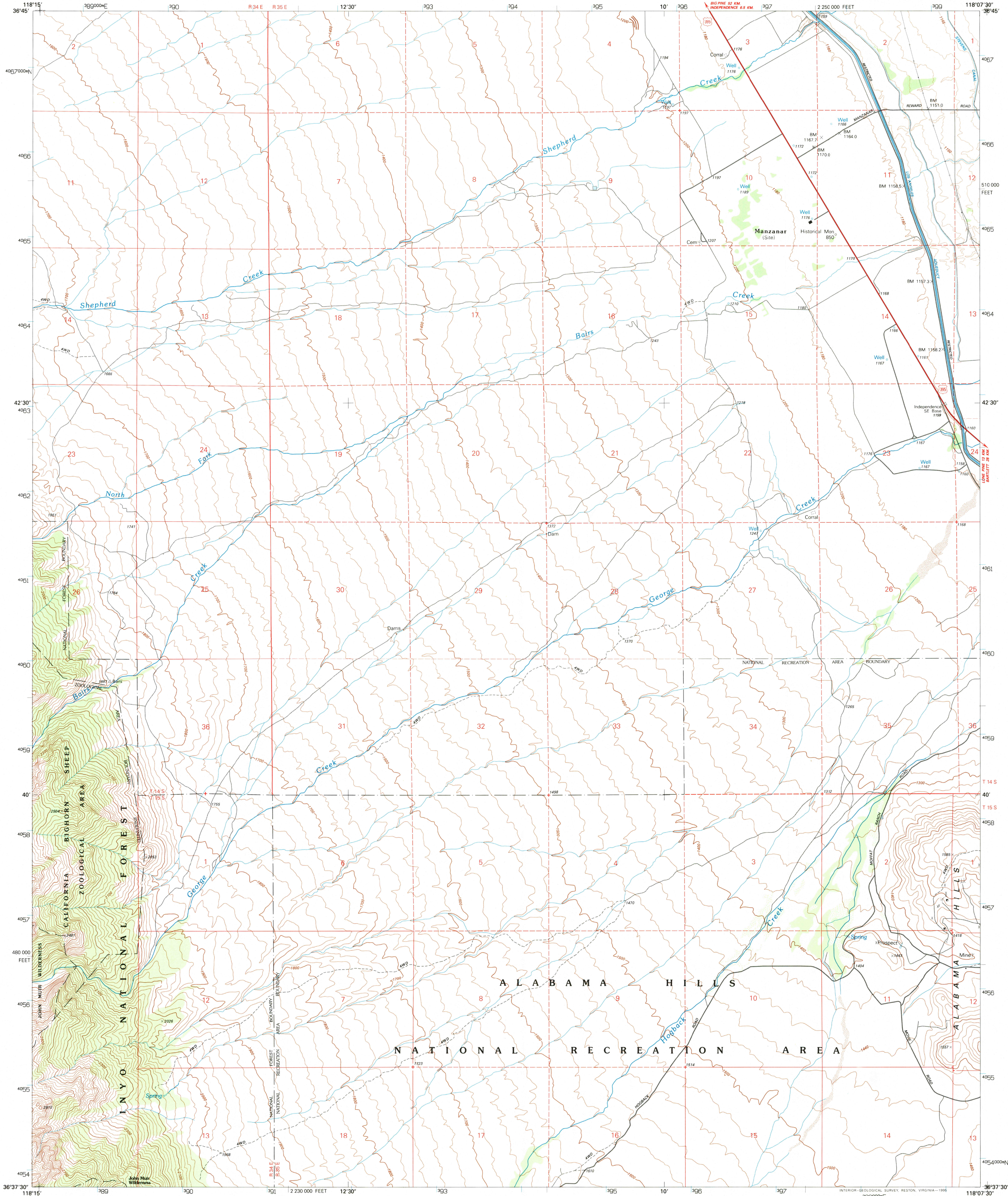


UNITED STATES
DEPARTMENT OF THE INTERIOR
GEOLOGICAL SURVEY

MANZANAR QUADRANGLE
CALIFORNIA-INOY CO.
7.5 MINUTE SERIES (TOPOGRAPHIC)



Produced by the United States Geological Survey in cooperation with California Department of Water Resources
Control by USGS and NOS/NOAA

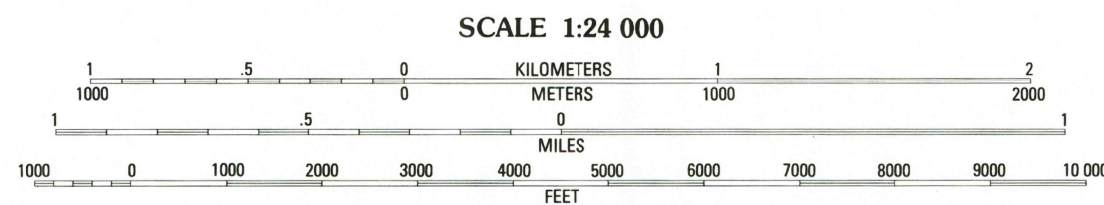
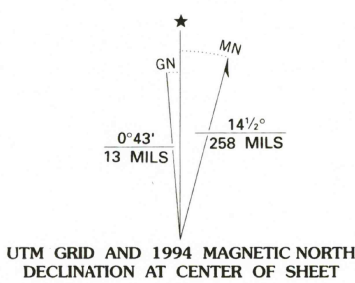
Compiled from imagery taken 1978. Photoinspected using imagery dated 1993; no major culture or drainage changes observed. PLSS and survey control current as of 1979. Boundaries verified and names revised 1994.

North American Datum of (NAD 27). Projection and 10 000-foot ticks: California Coordinate System, zone 4 (Lambert Conformal Conic). Blue 1000-meter Universal Transverse Mercator ticks, zone 11.

North American Datum of 1983 (NAD 83) is shown by dashed corner ticks. The values of the shift between NAD 27 and NAD 83 for 7.5-minute intersections are obtainable from National Geodetic Survey NADCON software.

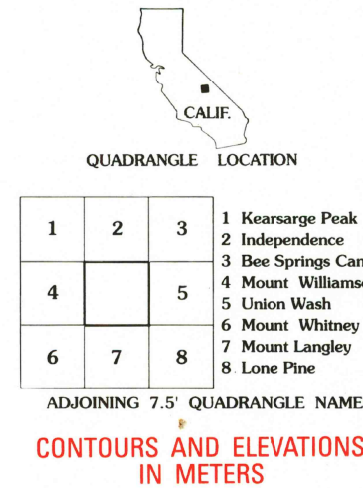
There may be private inholdings within the boundaries of the National or State reservations shown on this map.

Fine red dashed lines indicate selected fence lines. Where omitted, land lines have not been established.

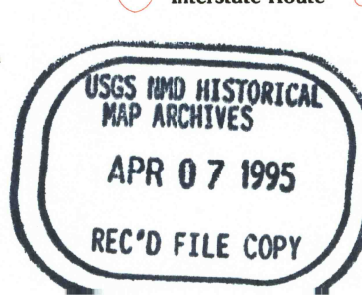


CONTOUR INTERVAL 20 METERS
SUPPLEMENTARY CONTOUR INTERVAL 2.5 METERS
NATIONAL GEODETIC VERTICAL DATUM OF 1929
CONTROL ELEVATIONS SHOWN TO THE NEAREST 0.1 METER
OTHER ELEVATIONS SHOWN TO THE NEAREST METER
TO CONVERT METERS TO FEET MULTIPLY BY 3.28084
TO CONVERT FEET TO METERS MULTIPLY BY 0.3048

THIS MAP COMPLIES WITH NATIONAL MAP ACCURACY STANDARDS
FOR SALE BY U.S. GEOLOGICAL SURVEY, DENVER, COLORADO 80225
OR RESTON, VIRGINIA 22092
A FOLDER DESCRIBING TOPOGRAPHIC MAPS AND SYMBOLS IS AVAILABLE ON REQUEST



ROAD CLASSIFICATION
Primary highway, hard surface: Light-duty road, hard or improved surface:
Secondary highway, hard surface: Unimproved road:
Interstate Route: U. S. Route: State Route:



MANZANAR, CA
36118-F2-TM-024
1993
DMA 2357 II NW-SERIES V895