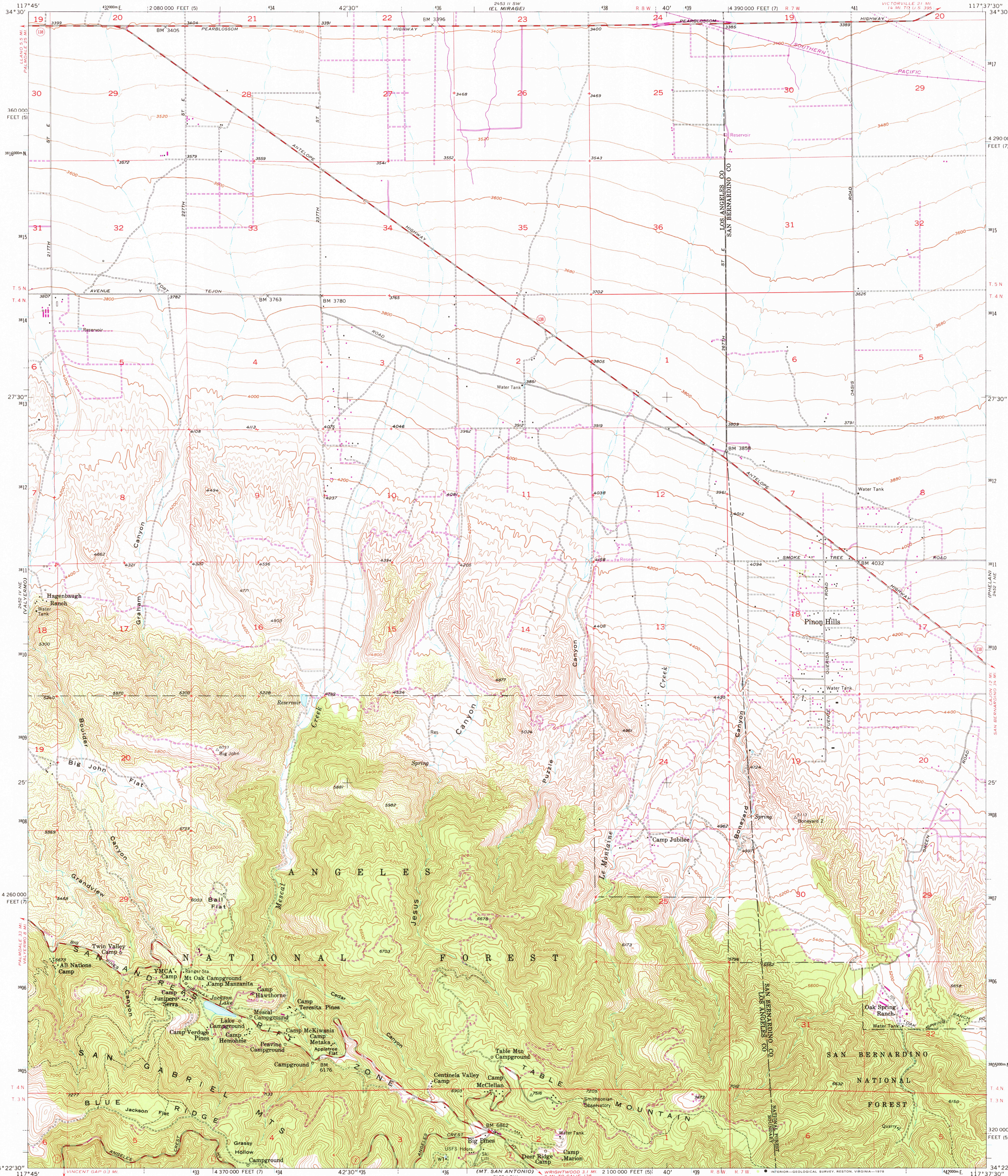
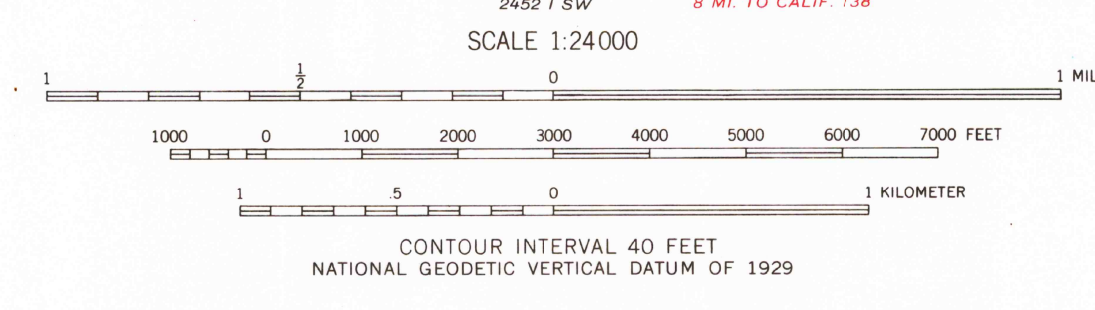
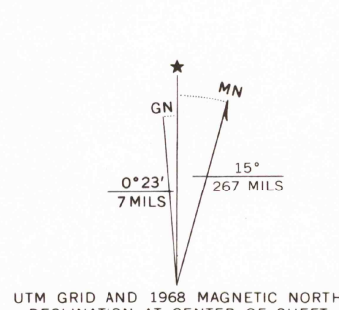


UNITED STATES  
DEPARTMENT OF THE INTERIOR  
GEOLOGICAL SURVEY

MESCAL CREEK QUADRANGLE  
CALIFORNIA  
7.5 MINUTE SERIES (TOPOGRAPHIC)



Mapped, edited, and published by the Geological Survey  
Control by USGS and USC&GS  
Topography from aerial photographs by photogrammetric methods  
Aerial photographs taken 1952. Field check 1956  
Polyconic projection. 1927 North American datum  
10,000-foot grids based on California coordinate system, zones 5 and 7  
1000-meter Universal Transverse Mercator grid ticks,  
zone 11, shown in blue  
Dashed land lines indicate approximate locations  
Where omitted, land lines have not been established  
Revised in cooperation with California  
Department of Water Resources  
Revisions shown in purple compiled from aerial photographs  
taken 1968. This information not field checked



ROAD CLASSIFICATION

Medium-duty ——— Light-duty ———  
Unimproved dirt ———

State Route

MAR 22 1978

MESCAL CREEK, CALIF.

8400

USGS  
Historical File  
Topographic Division

N3422.5—W11737.5/7.5  
1956  
PHOTO REVISITED 1968  
AMS 2452 I NW—SERIES V895

QUADRANGLE LOCATION

THIS MAP COMPLIES WITH NATIONAL MAP ACCURACY STANDARDS  
FOR SALE BY U. S. GEOLOGICAL SURVEY, DENVER, COLORADO 80225, OR RESTON, VIRGINIA 22092  
A FOLDER DESCRIBING TOPOGRAPHIC MAPS AND SYMBOLS IS AVAILABLE ON REQUEST