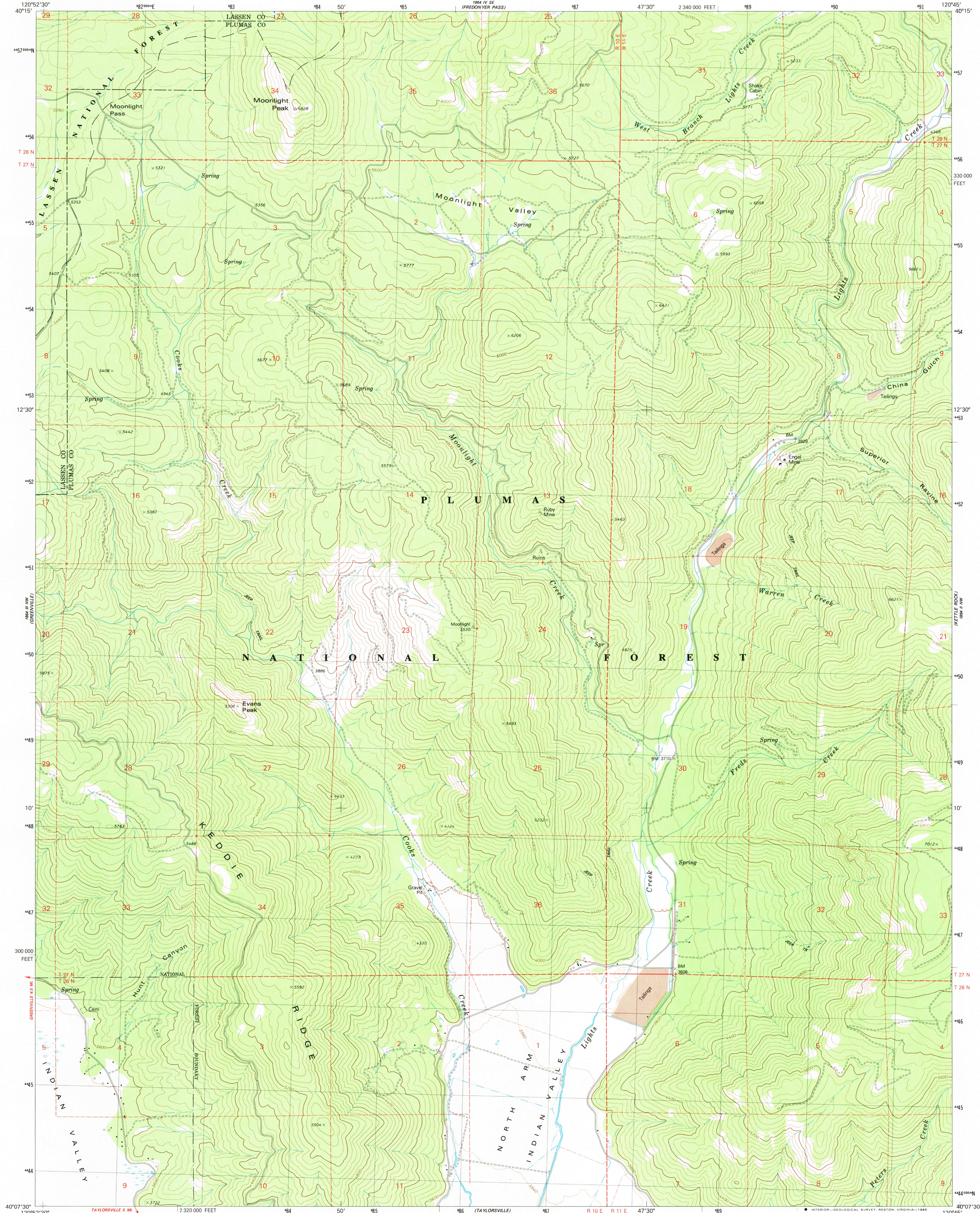


UNITED STATES  
DEPARTMENT OF THE INTERIOR  
GEOLOGICAL SURVEY

MOONLIGHT PEAK QUADRANGLE  
CALIFORNIA  
7.5 MINUTE SERIES (TOPOGRAPHIC)

NE 1/4 GREENVILLE 15' QUADRANGLE



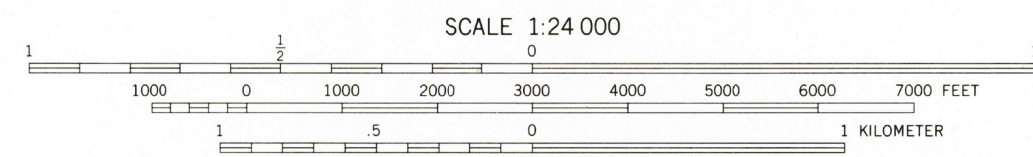
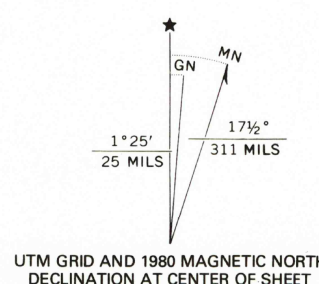
Mapped, edited, and published by the Geological Survey

Control by USGS and NOS/NOAA and U.S. Forest Service  
Topography by photogrammetric methods from aerial  
photographs taken 1973. Field checked 1974  
Map edited 1980

Projection and 10,000-foot grid ticks: California coordinate  
system, zone 1 (Lambert conformal conic)  
1000-meter Universal Transverse Mercator grid, zone 10  
1927 North American Datum

To place on the predicted North American Datum 1983  
move the projection lines 16 meters north and  
89 meters east as shown by dashed corner ticks

Where omitted, land lines have not been established  
There may be private inholdings within the boundaries of  
the National or State reservations shown on this map



CONTOUR INTERVAL 80 FEET  
SUPPLEMENTARY CONTOUR INTERVAL 20 FEET  
NATIONAL GEODETIC VERTICAL DATUM OF 1929

THIS MAP COMPLIES WITH NATIONAL MAP ACCURACY STANDARDS  
FOR SALE BY U. S. GEOLOGICAL SURVEY, DENVER, COLORADO 80225, OR RESTON, VIRGINIA 22092  
A FOLDER DESCRIBING TOPOGRAPHIC MAPS AND SYMBOLS IS AVAILABLE ON REQUEST



ROAD CLASSIFICATION	
Primary highway, hard surface	Light-duty road, hard or improved surface
Secondary highway, hard surface	Unimproved road
Interstate Route	U.S. Route
	State Route

MOONLIGHT PEAK, CALIF.  
NE 1/4 GREENVILLE 15' QUADRANGLE  
40120-B7-TF-024

1980

DMA 1864 III NE—SERIES V895