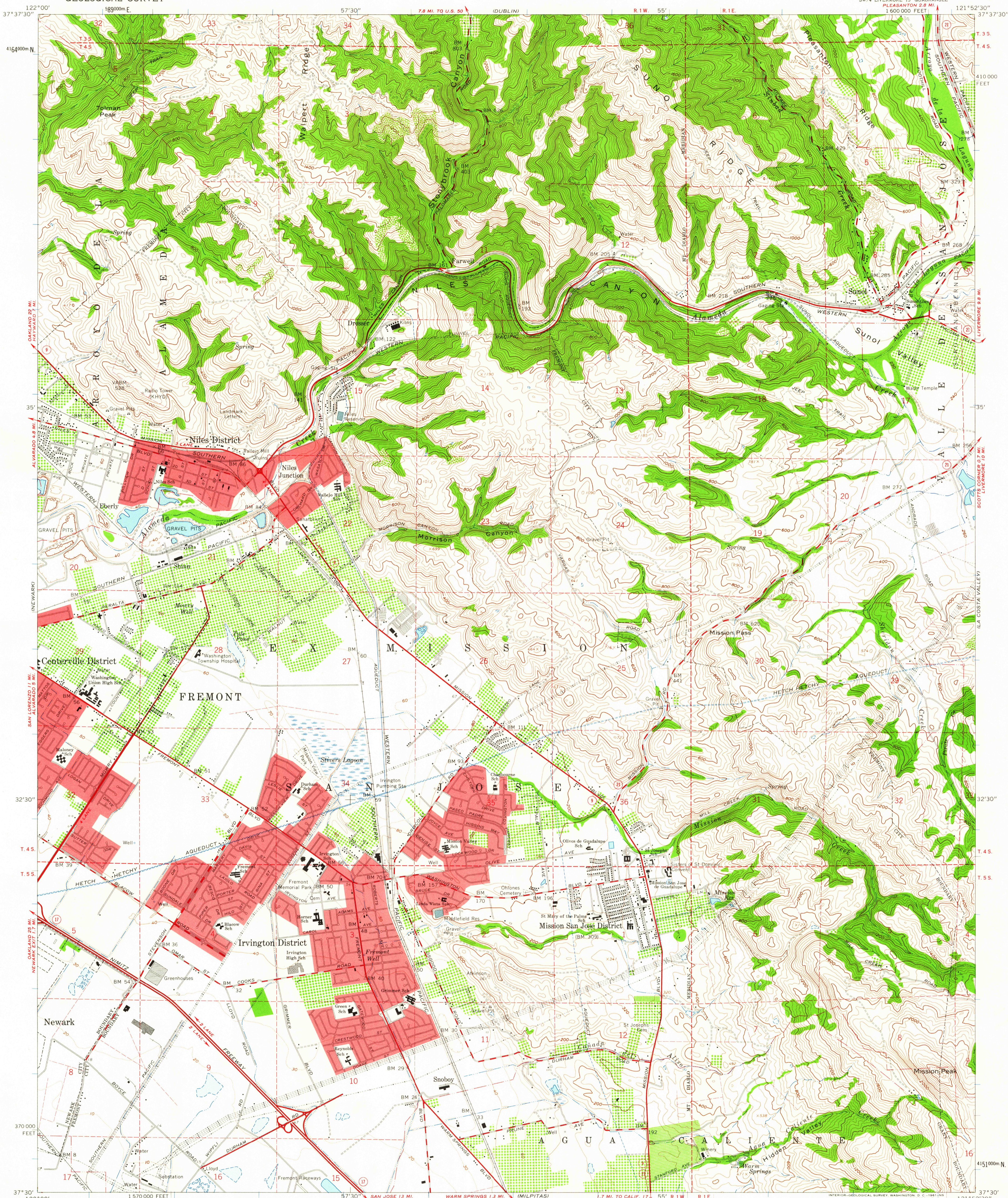
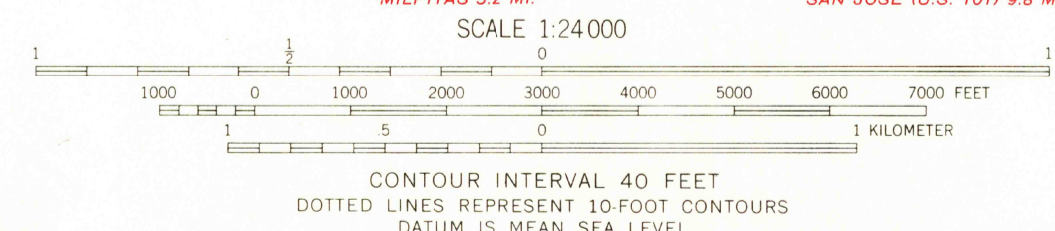


UNITED STATES
DEPARTMENT OF THE INTERIOR
GEOLOGICAL SURVEY

NILES QUADRANGLE
CALIFORNIA-ALAMEDA CO.
7.5 MINUTE SERIES (TOPOGRAPHIC)



Mapped, edited, and published by the Geological Survey with cooperation by the California Department of Water Resources Control by USGS, USC&GS, and Alameda County Topography from aerial photographs by photogrammetric methods and by planetable surveys 1953. Aerial photographs taken 1948 Revised from aerial photographs taken 1960. Field check 1961 Polyconic projection. 1927 North American datum 10,000-foot grid based on California coordinate system, zone 3 1000-meter Universal Transverse Mercator grid ticks, zone 10, shown in blue Dashed land lines indicate approximate locations. Land lines are unsurveyed in part of Ts. 3 and 4 S.-R. 1 W. Red tint indicates areas in which only landmark buildings are shown Fine red dashed lines indicate selected fence lines A portion of this map lies within a subsidence area



ROAD CLASSIFICATION
Heavy-duty ——— Light-duty ———
Medium-duty ——— Unimproved dirt ———
State Route ———

NILES, CALIF.
SW 1/4 LIVERMORE 15' QUADRANGLE
N3730-W1252.5/7.5

1961

THIS MAP COMPLIES WITH NATIONAL MAP ACCURACY STANDARDS
FOR SALE BY U. S. GEOLOGICAL SURVEY, DENVER 25, COLORADO OR WASHINGTON 25 D. C.
A FOLDER DESCRIBING TOPOGRAPHIC MAPS AND SYMBOLS IS AVAILABLE ON REQUEST

JAN 2 4 1962
3645