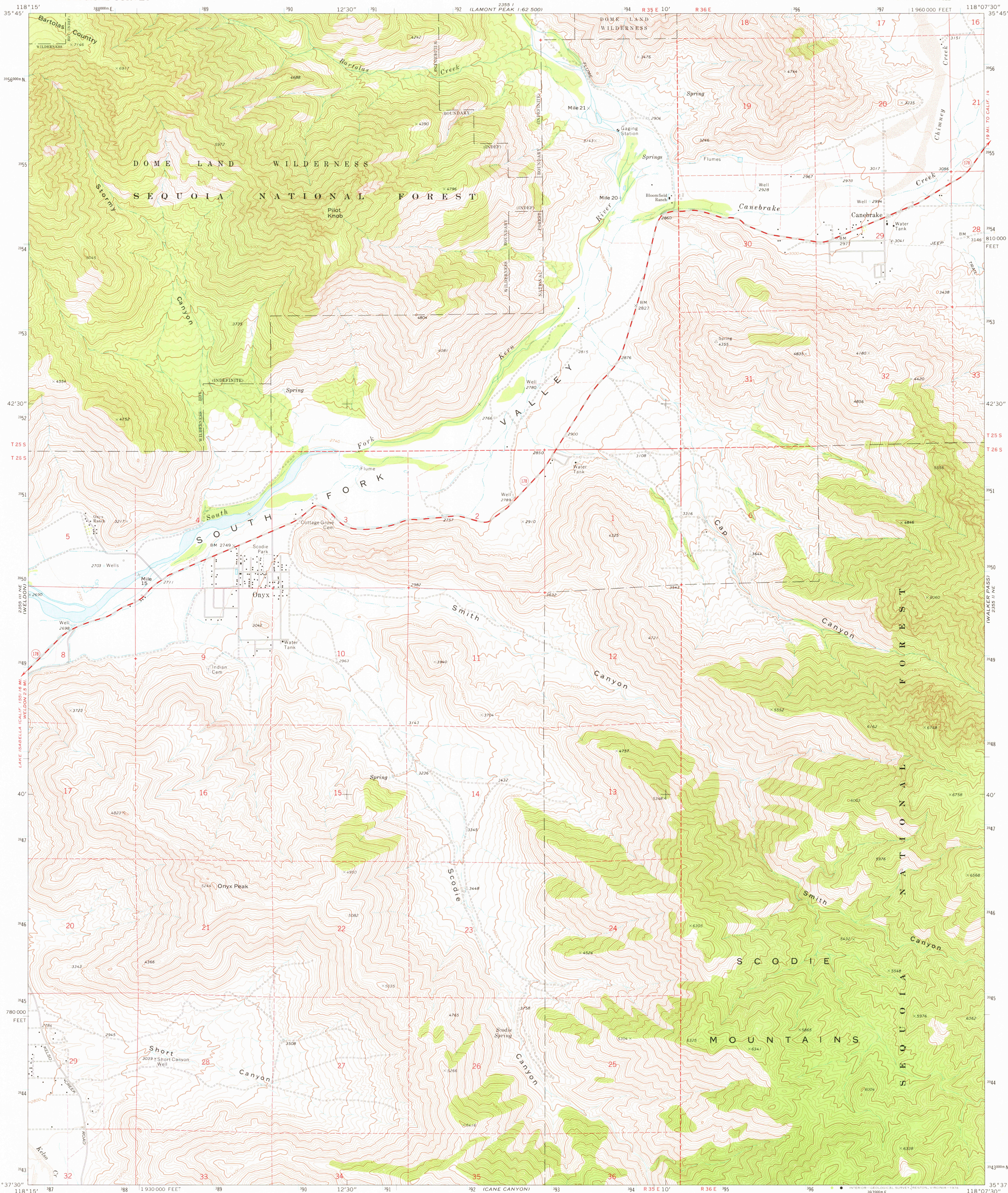
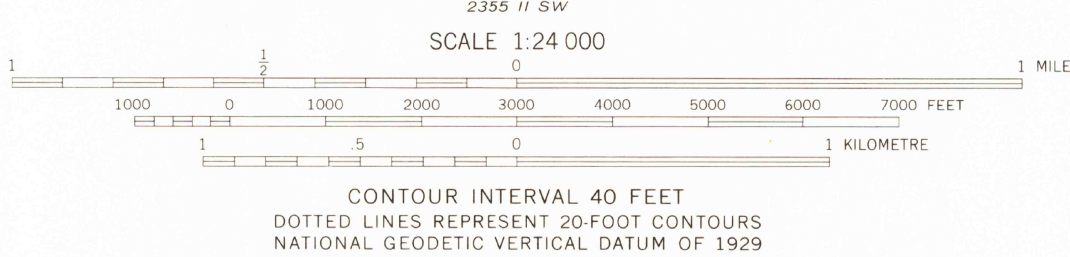
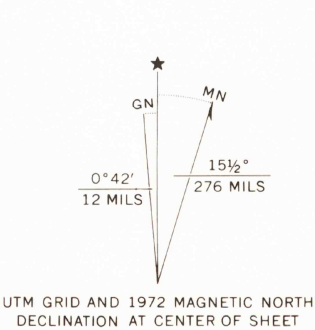


UNITED STATES  
DEPARTMENT OF THE INTERIOR  
GEOLOGICAL SURVEY

ONYX QUADRANGLE  
CALIFORNIA—KERN CO.  
7.5 MINUTE SERIES (TOPOGRAPHIC)  
NW 4 ONYX 15' QUADRANGLE



Mapped, edited, and published by the Geological Survey  
Control by USGS and NOS/NOAA  
Topography by photogrammetric methods from aerial  
photographs taken 1971. Field checked 1972  
Projection and 10,000-foot grid ticks: California coordinate  
system, zone 5 (Lambert conformal conic)  
1000-metre Universal Transverse Mercator grid ticks,  
zone 11, shown in blue. 1927 North American datum  
Fine red dashed lines indicate selected fence lines  
Where omitted, land lines have not been established  
or are not shown because of insufficient data



ROAD CLASSIFICATION  
Primary highway, hard surface  
Secondary highway, hard surface  
Unimproved road  
Interstate Route  
U.S. Route  
State Route

USGS  
Historical File  
Topographic Division

ONYX, CALIF.  
NW 4 ONYX 15' QUADRANGLE  
N3537.5-W11807.5/7.5  
1972

AMS 2355 11 NW—SERIES V895

THIS MAP COMPLIES WITH NATIONAL MAP ACCURACY STANDARDS  
FOR SALE BY U.S. GEOLOGICAL SURVEY, DENVER, COLORADO 80225, OR RESTON, VIRGINIA 22092  
A FOLDER DESCRIBING TOPOGRAPHIC MAPS AND SYMBOLS IS AVAILABLE ON REQUEST

JUL 0 1 1976