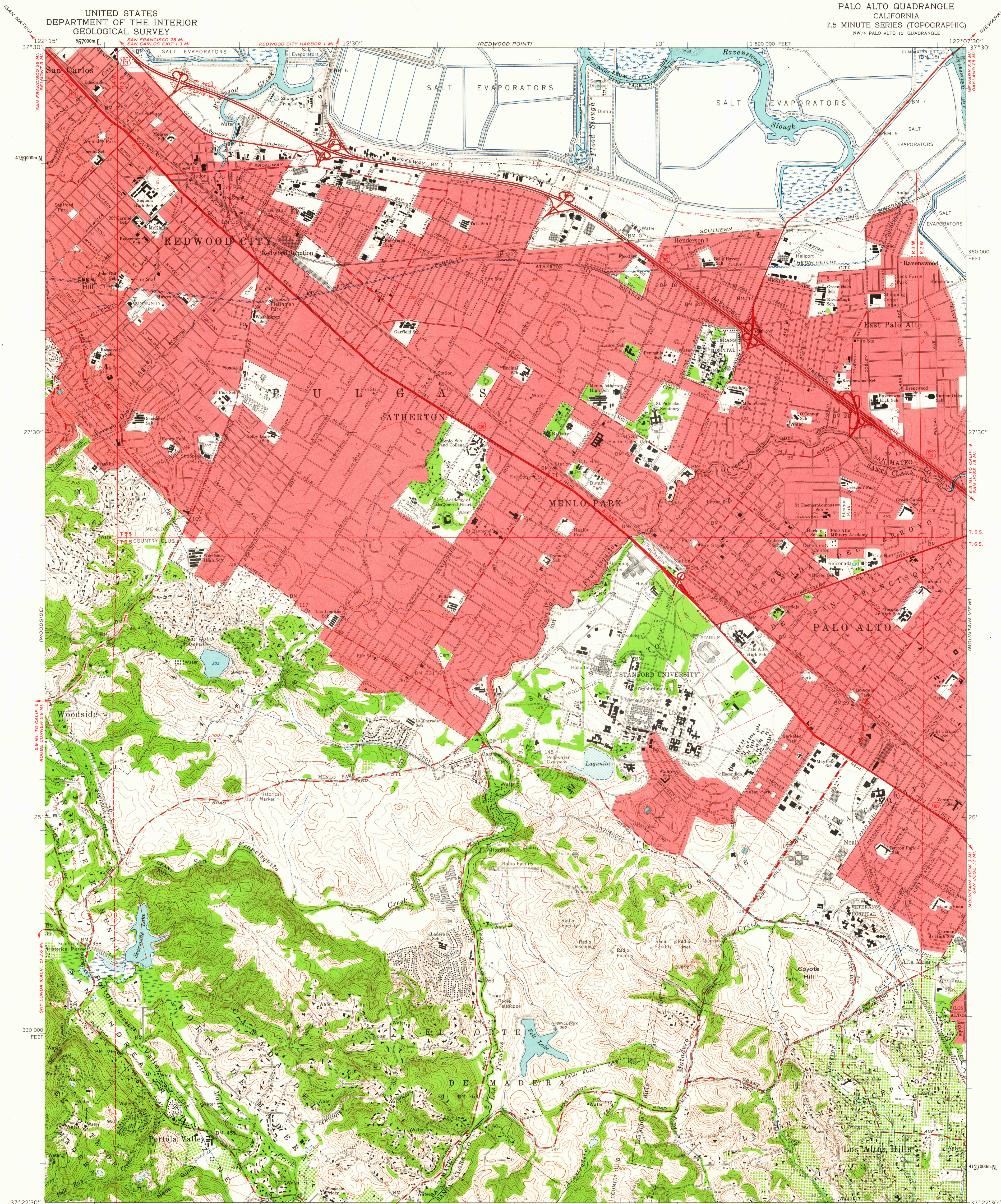


UNITED STATES  
DEPARTMENT OF THE INTERIOR  
GEOLOGICAL SURVEY

PALO ALTO QUADRANGLE  
CALIFORNIA  
7.5 MINUTE SERIES (TOPOGRAPHIC)  
NW 1/4 PALO ALTO 15' QUADRANGLE



Mapped, edited, and published by the Geological Survey  
with cooperation by the California Department of Water Resources  
Control by USGS, USC&GS, and USCE  
Topography from aerial photographs by photogrammetric methods  
and by planetable surveys 1953. Aerial photographs taken 1948.  
Revised from aerial photographs taken 1960. Field checked 1961  
Polyconic projection. 1927 North American datum  
10,000-foot grid based on California coordinate system, zone 3  
1000-meter Universal Transverse Mercator grid ticks,  
zone 10, shown in blue  
Red tint indicates area in which only landmark buildings are shown  
Dashed land lines indicate approximate locations  
Fine red dashed lines indicate selected fence lines  
A portion of this map lies within a subsidence area

SCALE 1:24,000  
1 0000 0 1000 2000 3000 4000 5000 6000 7000 FEET  
1 5 0 5 1 KILOMETER  
CONTOUR INTERVAL 20 FEET  
DOTTED LINES REPRESENT 5-FOOT CONTOURS  
DATUM IS MEAN SEA LEVEL  
SHORELINE SHOWN REPRESENTS THE APPROXIMATE LINE OF MEAN HIGH WATER  
THE MEAN RANGE OF TIDE IS APPROXIMATELY 7 FEET  
THIS MAP COMPLIES WITH NATIONAL MAP ACCURACY STANDARDS  
FOR SALE BY U.S. GEOLOGICAL SURVEY, DENVER 25, COLORADO OR WASHINGTON 25, D. C.  
A FOLDER DESCRIBING TOPOGRAPHIC MAPS AND SYMBOLS IS AVAILABLE ON REQUEST

USGS  
Historical File  
Topographic Division

ROAD CLASSIFICATION  
Heavy-duty ——— Light-duty ———  
Medium-duty ——— Unimproved dirt ———  
U.S. Route



PALO ALTO, CALIF.  
NW 1/4 PALO ALTO 15' QUADRANGLE  
N3722.5 - W12207.5/7.5  
1961

AUG - 9 1962

4055