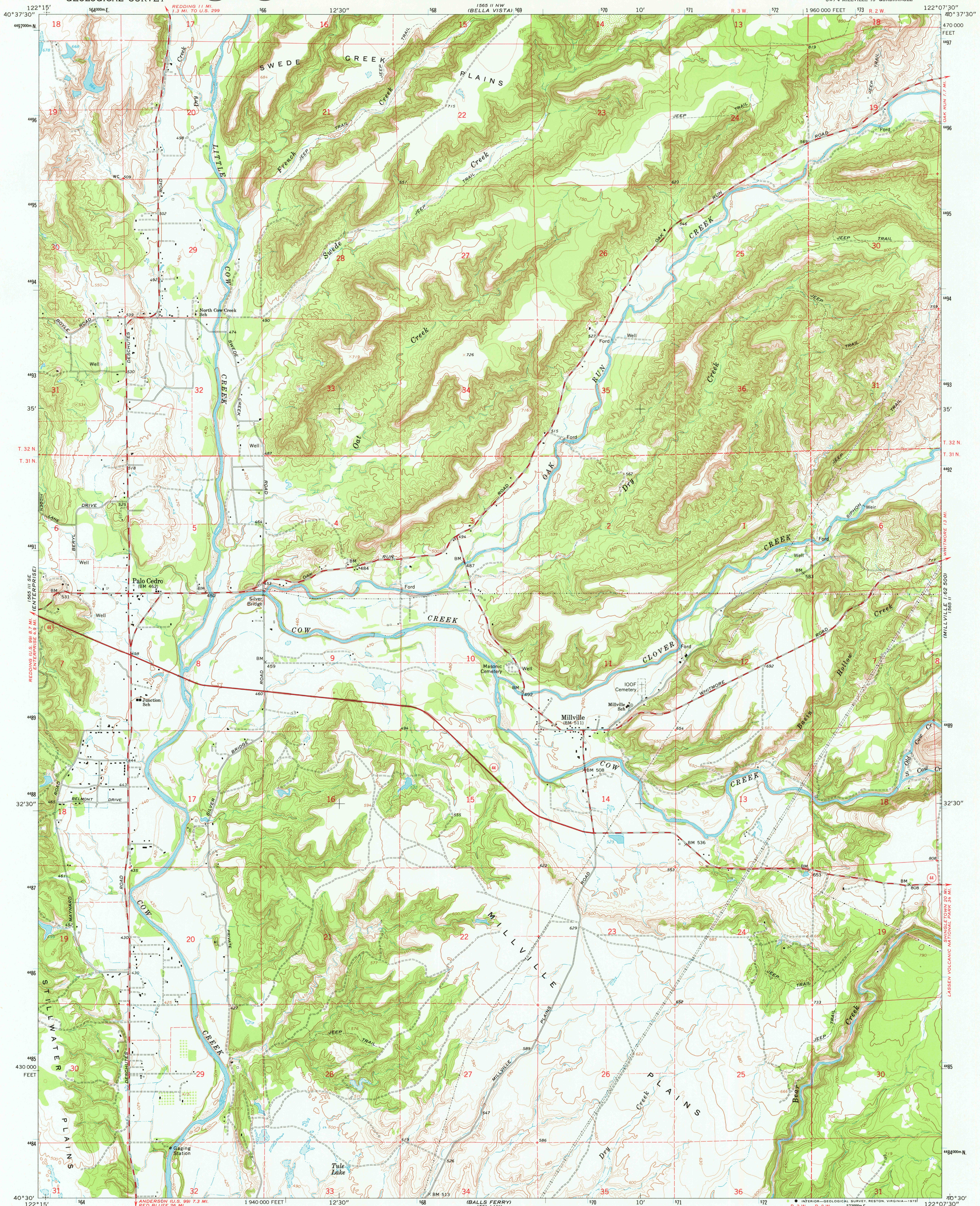
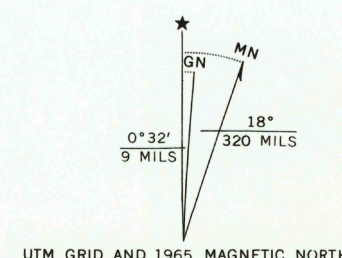




1565 II NE  
MILLVILLE 15' 600 600



Mapped, edited, and published by the Geological Survey  
Control by USGS and USC&GS  
Topography by photogrammetric methods from aerial  
photographs taken 1963. Field checked 1965  
Polyconic projection. 1927 North American datum  
10,000-foot grid based on California coordinate system, zone 1  
1000-meter Universal Transverse Mercator grid ticks,  
zone 10, shown in blue  
To place on the predicted North American Datum 1983  
move the projection lines 18 meters north and  
93 meters east as shown by dashed corner ticks  
Fine red dashed lines indicate selected fence lines



SCALE 1:24 000  
1 000 2000 3000 4000 5000 6000 7000 FEET  
1 5 10 KILOMETER  
CONTOUR INTERVAL 10 FEET  
NATIONAL GEODETIC VERTICAL DATUM OF 1929  
THIS MAP COMPLIES WITH NATIONAL MAP ACCURACY STANDARDS  
FOR SALE BY U. S. GEOLOGICAL SURVEY, DENVER, COLORADO 80225, OR RESTON, VIRGINIA 22092  
A FOLDER DESCRIBING TOPOGRAPHIC MAPS AND SYMBOLS IS AVAILABLE ON REQUEST



ROAD CLASSIFICATION  
Heavy-duty \_\_\_\_\_ Light-duty \_\_\_\_\_  
Medium-duty \_\_\_\_\_ Unimproved dirt \_\_\_\_\_  
State Route

PALO CEDRO, CALIF.  
SW 1/4 MILLVILLE 15' QUADRANGLE  
N4030-W12207.5/7.5

1965

DMA 1565 II SW-SERIES V895